

AFTERCARE INSTRUCTIONS

Your fitting has a high quality finish and should be treated with care to preserve the visible surfaces.

All surface finishes will wear if not cleaned correctly, the only safe way to clean your mixer is to wipe with a soft damp cloth. Stains can be removed using washing up liquid. All bath cleaning powders and liquids will damage the surface of your fitting, even the non-scratch cleaners. **NOTE: Never use abrasive detergents or disinfectants or those containing alcohol, hydrochloric acid or phosphoric acid.**

Bristan recommend E-Cloth for cleaning all of our bathroom & kitchen products. Using just water, E-cloth gives a smear free, deep clean by breaking up and holding dirt, which normal cloths leave behind. Order through your Bristan stockist. (ORDER CODE: E CLOTH)



GUARANTEE

All products are manufactured to the highest standards and a 5 year guarantee covers any defect in manufacture.

NOTE: The 5-year guarantee on the cartridge is invalidated if damaged by any waterborne debris.

All products must have access for servicing or replacement during the life of the product.

In the interests of continuous product development we reserve the right to alter specification as necessary

PRODUCT CODE:

PRODUCT IDENTIFICATION CODE LASER ETCHED ON PRODUCT
Installer please fill in code here _____.(Where applicable)

TELEPHONE HELPLINE! +44 (0)844 701 6273

Bristan Group Limited
Birch Coppice Business Park
Dordon
Tamworth
Staffordshire
B78 1SG
UK

A Masco Company
Website: www.bristan.com
Telephone: +44 (0) 844 701 6274
Facsimile: +44 (0) 844 701 6275

BRISTAN

Java Basin & Bidet Mixer (With pop-up waste)

Fitting Instructions & Contents List

Please keep these instructions for future reference and request of replacement part

WATER PRESSURE

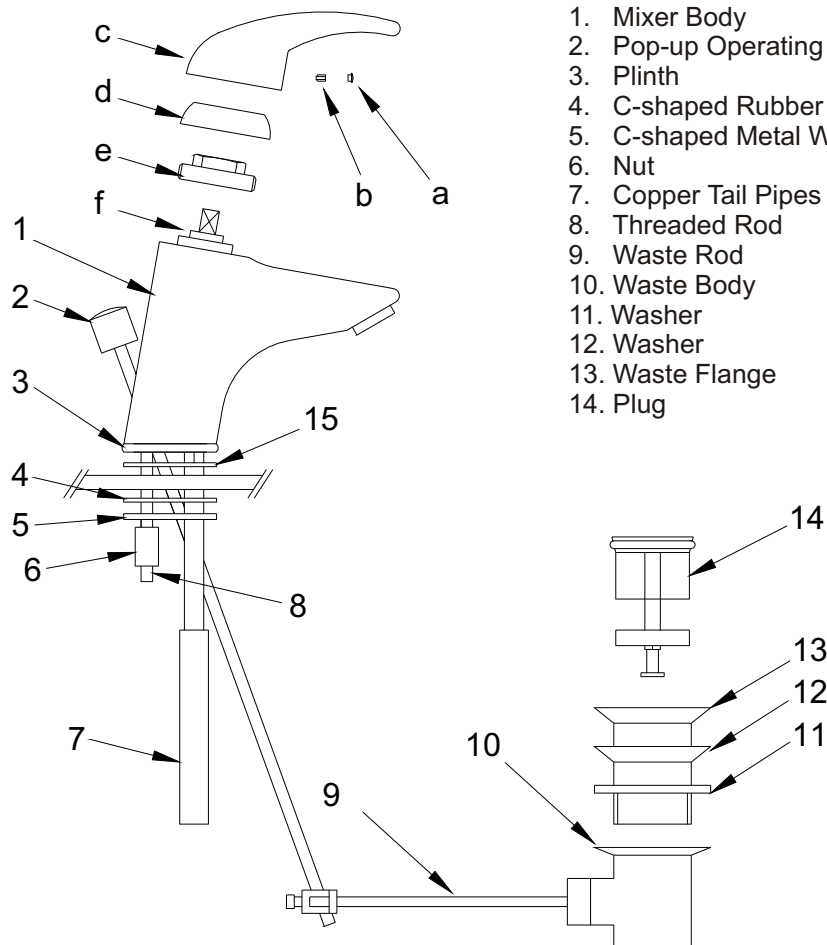
This mixer is suitable for use at all supply pressures. However for optimum use both the hot and cold supplies should be reasonably balanced.

If the fitting is installed at low pressure (tank fed), then the minimum distance from the outlet of the nozzle to the underside of the cold tank should be 2.0 metres to ensure adequate shower performance.

This mixer should be installed in compliance with the Water Regulations. Where the supplies are unbalanced, i.e hot water from the cylinder tank/cold from the mains, approved check valves must be fitted in the supply pipes. For further details contact your Local Water Authority.

CONTENTS

1. Mixer Body
2. Pop-up Operating Rod
3. Plinth
4. C-shaped Rubber Washer
5. C-shaped Metal Washer
6. Nut (x2)
7. Copper Tail Pipes (x2)
8. Threaded Rod (x2)
9. Waste Rod
10. Waste Body
11. Washer
12. Washer
13. Waste Flange
14. Plug



INSTALLATION

1. Identify all components and check for completeness, particularly before commencing installation.
2. Fit the mixer body (1) to the basin/bath using the 'C' plate fixing kit. The plinth (3) and O-ring (15) go between the fitting and the basin/bidet, and the 'C' shaped rubber (4) and metal washers (5) on the underside of the basin/bidet. Secure into position using the threaded rods (8) and nuts (6).
3. Fit the tail pipes (7) to the fitting and connect the hot and cold supplies.
4. Fit the pop-up waste, using washers (11) below & (12) above the basin/bidet & connect it to the mixer. It is recommended that a silicon sealant be applied to both sealing faces of washers (11 and 12). The waste can be set by adjusting the waste rod (9)/ operating rod (2) connecting bracket and the screw in the base of the plug (14).
5. Fully open the mixer in the mid position, letting the water flow for a few minutes to check all joints and connections for leaks.
6. See back page for aftercare instructions.

N.B. Please write the name and product code of your fitting in the spaces provided overleaf. This will ensure a speedier service if you should need to phone the helpline.

MAINTENANCE

If the fitting begins to drip:

1. Turn off the water supply
2. Remove index cap(a), loosen grub screw (b) with 2.5mm hexagonal key and pull off head (c), unscrew shroud (d) retaining nut (e).
3. Remove cartridge (f).
4. Clean or replace cartridge, clean and grease seal and refit.

Note: That there are locating pins on the bottom of the cartridge that fit in Holes inside the tap, to ensure it is fitted the right way round.

5. Replace cartridge and head, then turn on the water supply.
6. Contact our helpline if problem persists.

PLEASE NOTE:

In the unlikely event you find a part missing, please contact our Customer Service helpline on **0844 701 6273** for immediate dispatch of part