

AFTERCARE INSTRUCTIONS

Your fitting has a high quality finish and should be treated with care to preserve the visible surfaces.

All surface finishes will wear if not cleaned correctly, the only safe way to clean your mixer is to wipe with a soft damp cloth. Stains can be removed using washing up liquid. All bath cleaning powders and liquids will damage the surface of your fitting, even the non-scratch cleaners. **NOTE: Never use abrasive detergents or disinfectants or those containing alcohol, hydrochloric acid or phosphoric acid.**

GUARANTEE

All products are manufactured to the highest standards and a 5 year guarantee covers any defect in manufacture.

NOTE: The 5-year guarantee on the cartridge is invalidated if damaged by any waterborne debris.

In the interests of continuous product development we reserve the right to alter specification as necessary

PRODUCT CODE: Z SHX C

PRODUCT IDENTIFICATION CODE LASER ETCHED ON PRODUCT

Installer please fill in code here _____.(Where applicable)

TELEPHONE HELPLINE! +44 (0)844 701 6273

Bristan Group Limited
Birch Coppice Business Park
Dordon
Tamworth
Staffordshire
B78 1SG
UK
A Masco Company
Website: www.bristan.com
Telephone: +44 (0) 844 701 6274
Facsimile: +44 (0) 844 701 6275
Email: enquire@bristan.com

BRISTAN

Self-Closing Exposed Shower

Fitting Instructions & Contents List

Before starting any installation project please consider:

Prior to drilling into walls, check there are no hidden electrical wires, cables or water supply pipes with the aid of an electronic detector. If you use power tools do not forget:

- Wear eye protection
- Unplug equipment after use



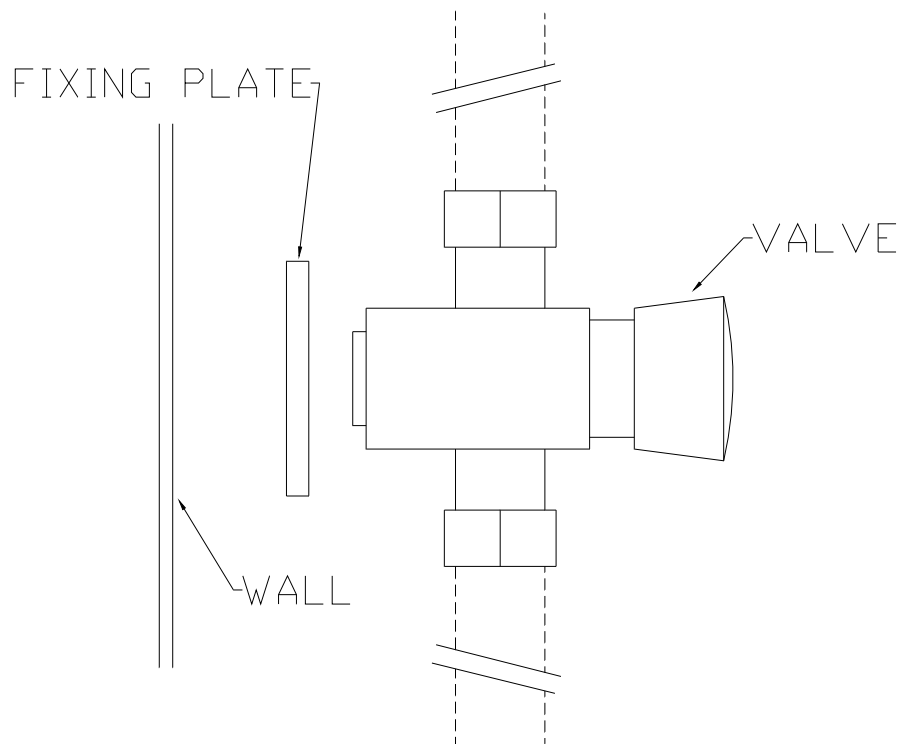
Please keep these instructions for future reference and request of replacement part

WATER PRESSURE

The working pressure of this fitting is from 0.1 bar to 3 bar.

If the fitting is installed at low pressure (tank fed), then the minimum distance from the outlet of the fitting to the underside of the cold tank should be 1.8 metres (equivalent to approx 0.1 bar at showerhead) to ensure adequate performance. In areas with high water pressure, the action of the shower may be affected. To overcome this problem you have to reduce the pressure with a flow restrictor or with a pressure reducer (not supplied).

This fitting should be installed in compliance with the Water Regulations. For further details contact your Local Water Authority.



INSTALLATION

1. Identify all components and check for completeness, particularly before commencing installation. Inlet/outlet thread connections are ½" BSP.
2. Establish the position of the valve and connect the inlet and outlet pipes, (Vertical or horizontal), observing the arrow on the body for direction of flow.
3. Screw fixing plate onto the valve and screw the plate to the wall.
4. The fitting is supplied with both red and blue indices, for either hot or cold use. Please ensure that the appropriate indice is fitted.
5. Turn on the supply and operate the shower several times to flush the system.

Note! As the supply is turned on for the first time the water may start to flow automatically. This is not uncommon and will cease after a short period.

6. Check all joints and connections for leaks.
7. See over the page for aftercare instructions.

PLEASE NOTE:

In the unlikely event you find a part missing, please contact our Customer Service helpline on **0844 701 6273** for immediate dispatch of part