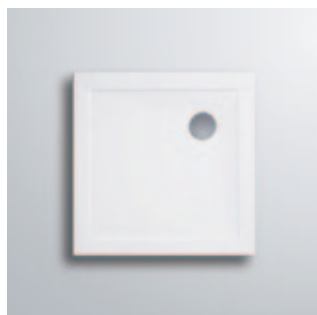


Tray Ranges

Standard Tray Shapes

Trays can be supplied to fit all models. Quadrants are designed to fit a 550mm tray radius. All Walk-In enclosures may be fitted to a wide range of tray sizes; please contact Lakes Bathrooms for advice. Certain trays may vary slightly from those shown.



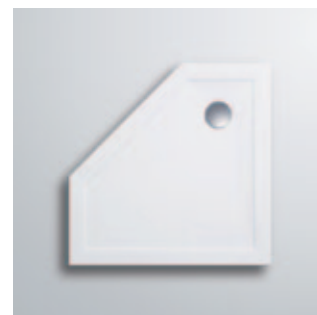
Square



Rectangular: Waste position varies depending on tray size (see tables p94-97)



Quadrant / Offset Quadrant



Pentagon

Easy-Plumb Trays

All of our Easy-Plumb Trays are supplied complete with legs, panels and applicable chrome waste kit.



Acrylic Capped Resin (ABS) Easy-Plumb Tray with magnetic side panel



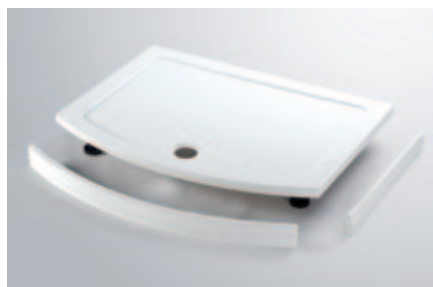
80mm Stone Resin Easy-Plumb Tray



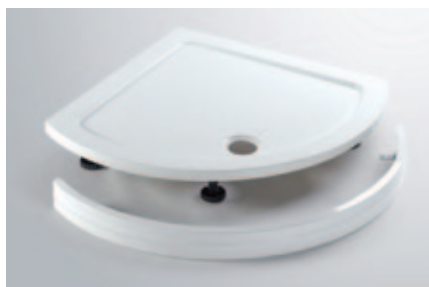
90mm Waste Suitable for all low profile trays

Special Trays

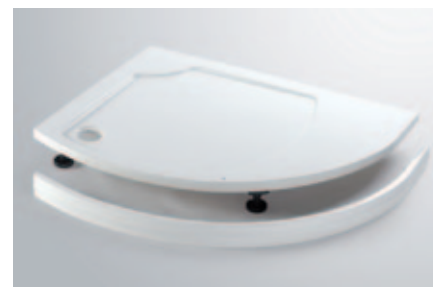
Important Note: The Bow Fronted Slider, Curved Corner Slider and Compartment Enclosure require special trays which are designed specifically for these models. They should, therefore, be purchased together with the tray. See relevant enclosure pages for tray pricing on these products.



Bow Fronted Slider Low Profile Easy-Plumb (see p41)



Curved Corner Slider Low Profile Easy-Plumb (see p43)



Compartment Enclosure Low Profile Easy-Plumb (see p45)



Acrylic Capped Resin (ABS) Tray with curved raised drying area



Acrylic Capped Resin (ABS) Tray with rectangular raised drying area