

## Assembly


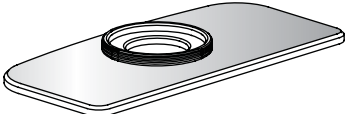
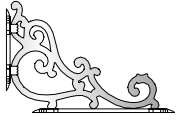
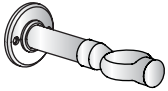




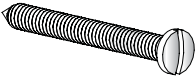
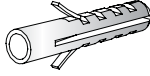

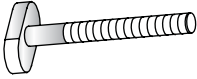
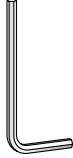



- Mount the cistern securely on the wall at the height of 1100mm from the underside of the cistern to the floor using the fixing holes through the rear of the cistern (**See hint 1**).
- Use the **brass fixing nut** (as part of the **decorative cover**) to fix in the cistern fittings. Place the **decorative cover** and **plastic fixing nut, plastic washer, cone shaped washer** (supplied as parts of the cistern fittings) over the top of the **flush pipe** and insert into the **threaded siphon stem** (supplied as part of the cistern fittings). Once the **flush pipe** is secured by the **plastic fixing nut**, screw the **decorative cover** up to the **brass fixing nut**.
- Insert the **flush cone washer** into the pan (supplied as part of the flush pipe kit; **DO NOT** use the **flush cone washer** supplied with the cistern fittings, this should be discarded).
- Install the **pan decorative plate** to the pan using the **thick rubber washer, screw, rubber washer, brass washer** and **fixing nut**.
- Insert the **buffer clip body** to the **flush pipe**.
- Insert the **flush pipe** into the pan via the **pan decorative plate** and **flush cone washer**.
- Locate the **buffer clip** so as to prevent collision between the seat and flush pipe. This **buffer clip** will also secure the **flush pipe** to wall by fixing the **wall bracket** upto wall.
- Mount the **ornate brackets** using the screws provided snugly under the cistern (**See hint 2**).

## HANDY HINT

1. When installing your cistern, ensure that the **rubber spacing washers** are used to create a small gap between the cistern back and the wall. There are two reasons for this; firstly it will help to reduce the possibility of condensation when cold mains pressure is contained within a humid environment and secondly, the gap will help prevent “thermal shock”. This is when rapid temperature change occurs (usually overnight) and causes the wall to contract or expand, thus cracking the sanitaryware. When fixing the cistern to the wall it is advisable to insert the screw through a washer (not supplied) on the inside of the cistern. This will prevent the screw damaging the sanitary ware when the screw “bites”.

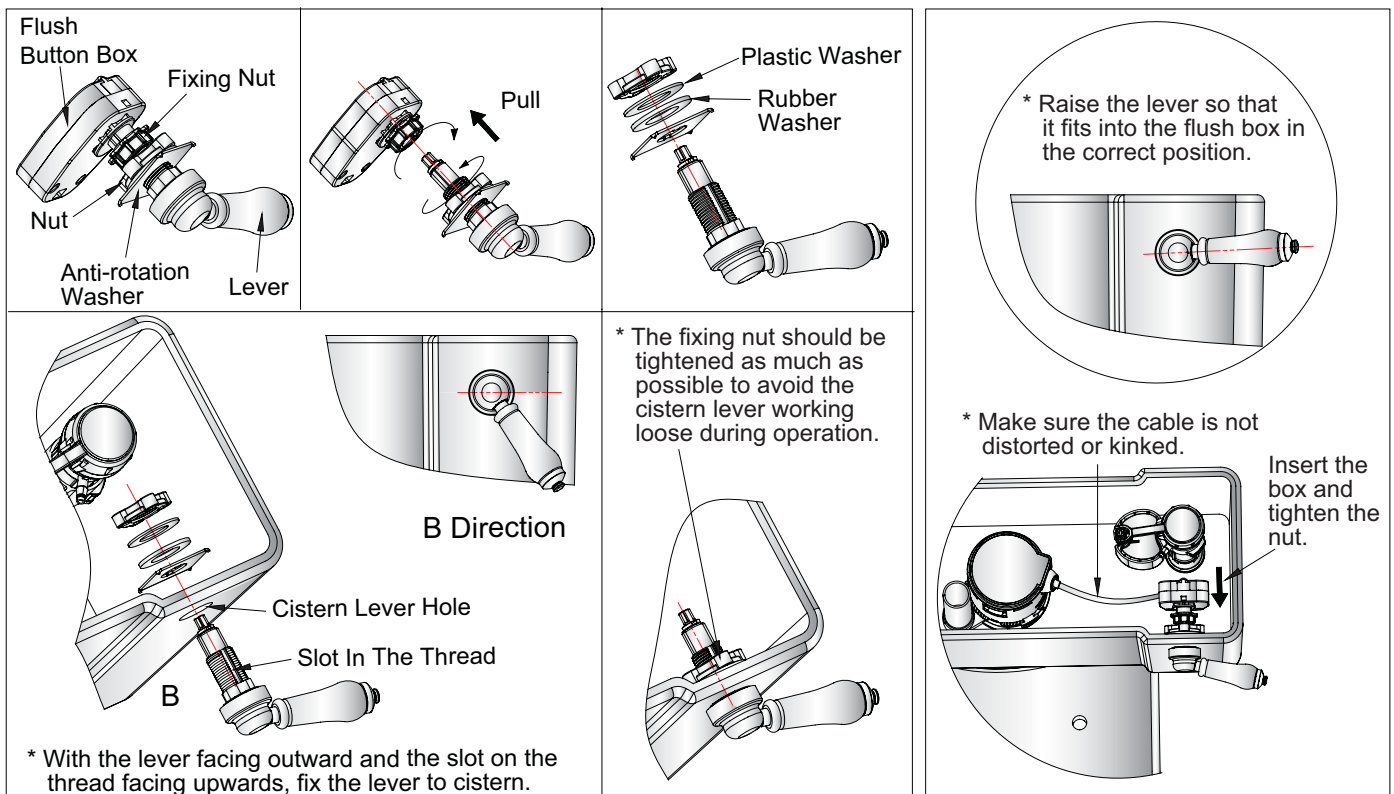
2. **The ornate brackets are purely decorative.** They should not be used as support for the cistern. Always ensure that the cistern is firmly and securely fixed to the wall via the fixing holes at the rear of the tank.

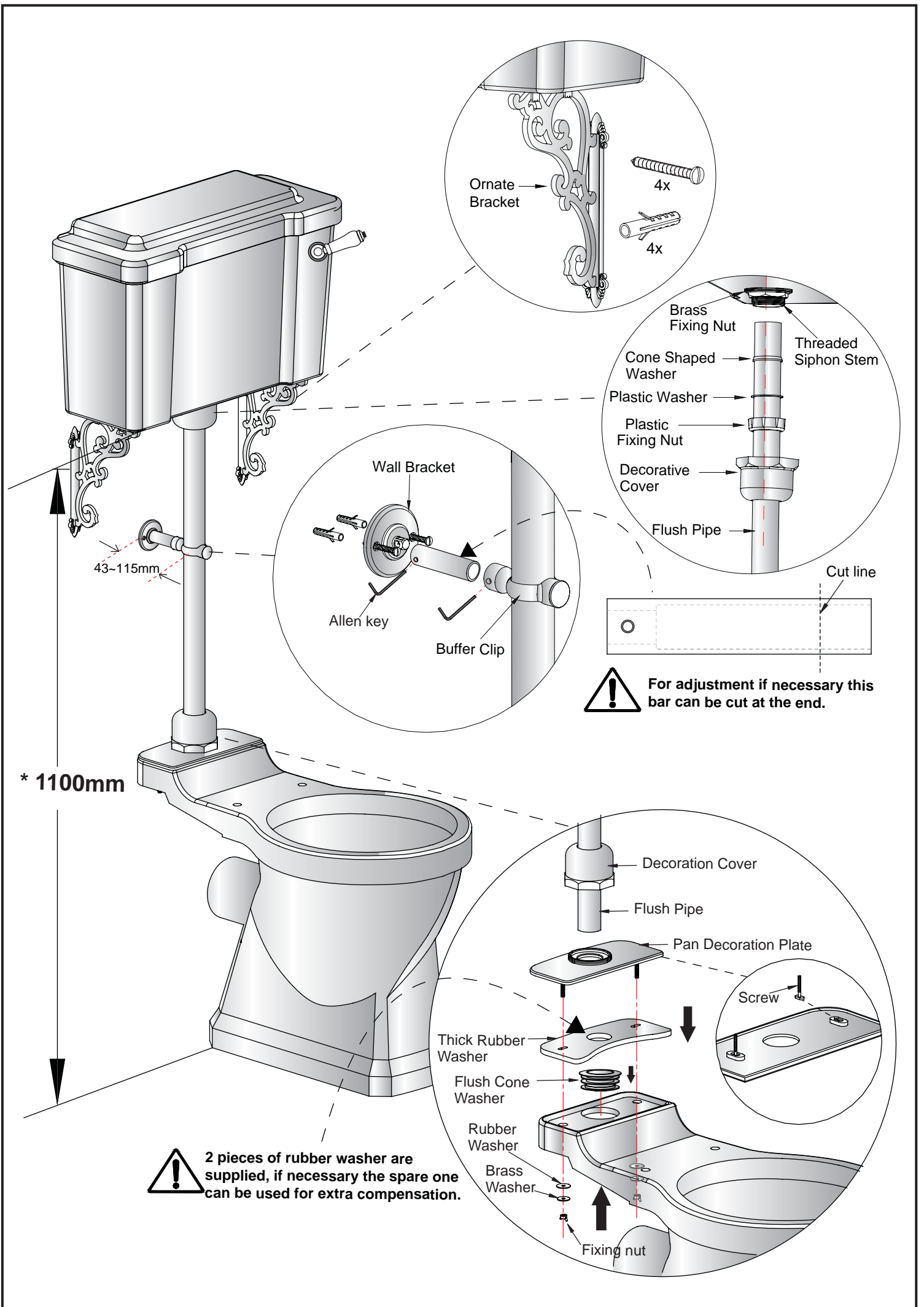
## Parts supplied:

		flush pipe		1x	
	1x		2x		1x
	2x		1x		1x
	1x		10x		10x
	4x		2x		1x
	2x		2x		2x

## Cistern Fittings Installation:

Please refer to the Cistern Fitting instructions for installation.  
For the lever installation please refer to the diagram below.





Ornate Bracket

4x

4x

Brass Fixing Nut

Threaded Siphon Stem

Cone Shaped Washer

Plastic Washer

Plastic Fixing Nut

Decorative Cover

Flush Pipe

Cut line

Wall Bracket

Allen key

Buffer Clip



For adjustment if necessary this bar can be cut at the end.

\* 1100mm

43-115mm

Decoration Cover

Flush Pipe

Pan Decoration Plate

Screw

Thick Rubber Washer

Flush Cone Washer

Rubber Washer

Brass Washer

Fixing nut



2 pieces of rubber washer are supplied, if necessary the spare one can be used for extra compensation.