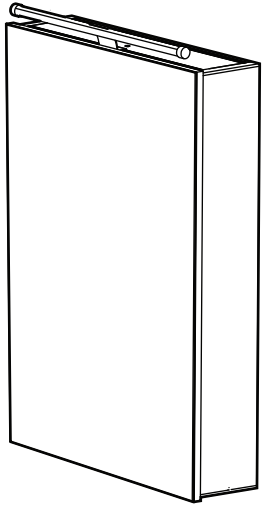


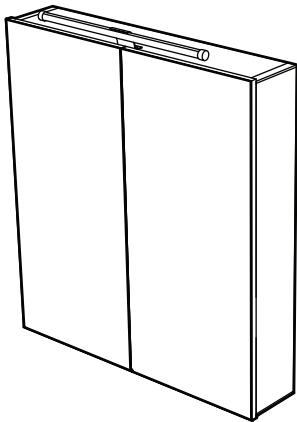
### Installation & care instructions

Please retain for future reference

SINGLE DOOR ALUMINIUM CABINET  
CO44AL



DOUBLE DOOR ALUMINIUM CABINET  
CO60AL



### ELECTRICAL SAFETY INSTUCTIONS

(Applicable to UK Installations only)

All fittings must be installed by a competent person, in accordance with current IEE wiring regulations. If in doubt consult a qualified electrician.

#### IMPORTANT

Always switch off the electrical supply at the mains during installation and maintenance. It is recommended that the fuse is withdrawn or the circuit breaker is switched off for the necessary circuit before installation commences.

Fitting in Bathrooms is subject to the appropriate zone in accordance with IEE Regulations. This product is suitable for outside zones. It IS NOT suitable for installation in Zone 0 or Zone 1. It is also not suitable for installation in saunas, steam rooms or shower cubicles. This product is only suitable for permanent installation. DO NOT connect to a trailing plug and socket outlet. This product is only suitable for indoor use. Do not attach the product to surfaces that are damp or otherwise electrically conductive.

### INSTALLATION CARE & SAFETY

Wear suitable eye protection when drilling. Take care when using power tools near water - the use of a residual current device (RCD) is advised. Beware of hidden cables or pipes. Take care if drilling on tiled surfaces as the drill may slip. A piece of masking tape applied to the wall before marking out the fixing holes will stop the drill from wandering.

#### IMPORTANT

The product must be installed an appropriate distance away from the wall so that the rocker switch can be operated.

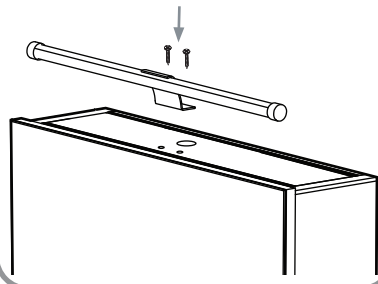
DO NOT strike glass components with hard or pointed items. DO NOT place very hot or very cold items against or in close proximity to glass surfaces unless an adequately thick insulation material is used to prevent such items coming into contact with the glass.

### COMPLIANCE

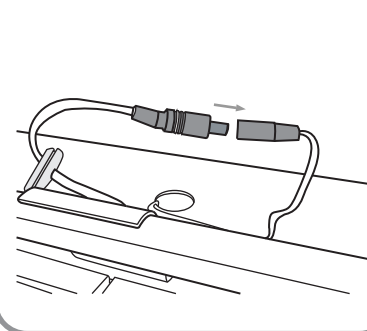
This product complies with the following safety standards:  
BS EN 60598-1: 2004, EN 60598-2-1: 1989, BS EN 60598-2-2: 1997 & Amd 1. BS 7449:  
(1991). BS EN 14749: (2005), IP44 rated in accordance with BS60529:1992 & BS EN 60068-2-18.

### INSTALLING THE LIGHT

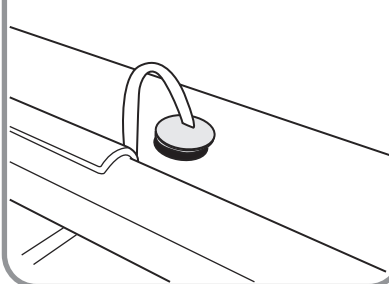
Secure the light to the top of the cabinet using the fixing screws supplied. Locate the screws in the holes provided.



Plug the light fitting into the cabinet as shown.



Push the connection and wires into the large hole on top of the cabinet. Place the rubber seal into the hole to hold the wire in place.



### WIRING

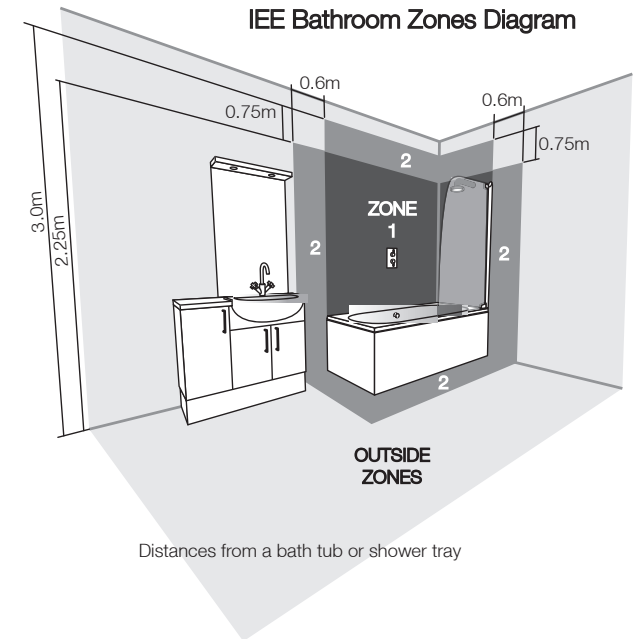
This product is manufactured to class I category and must have an earth connection.⊕

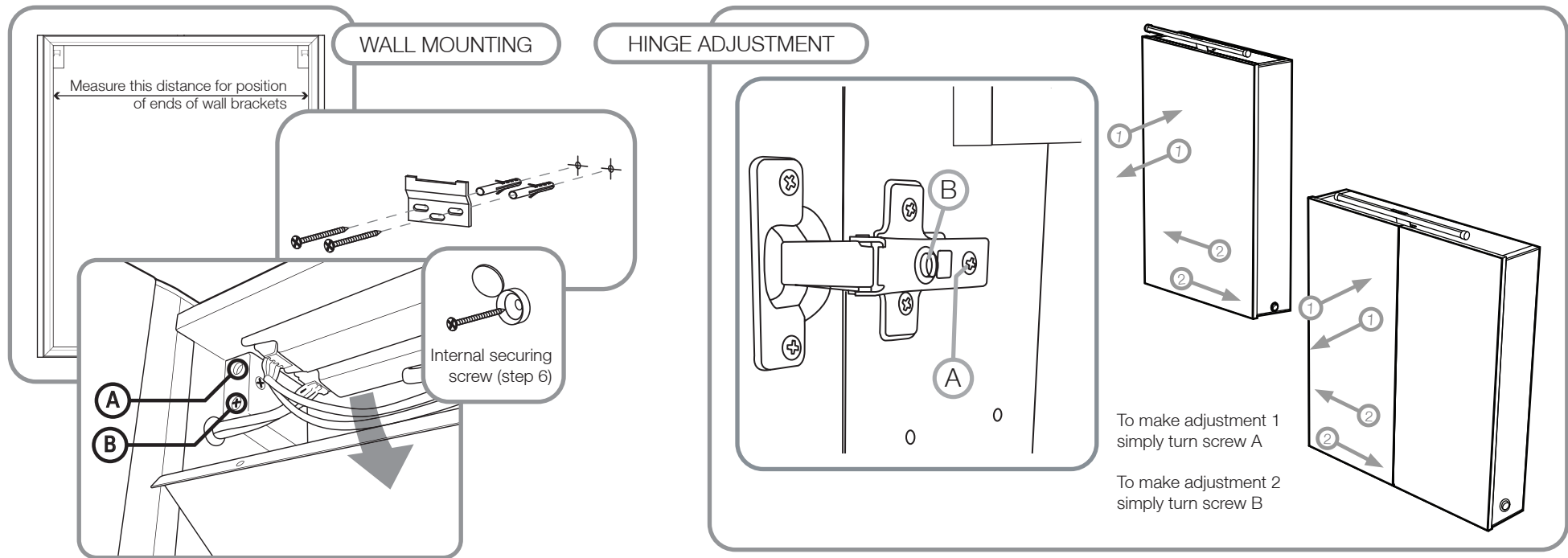
#### COLOUR CODING:

L - Live = Brown  
N - Neutral = Blue  
⊕ - Earth = Green & Yellow

### LIGHTS

1x 12V LED





### INSTALLATION PROCEDURE

Please read the opposite side of the page before continuing with the installation.

- 1) Remove the packaging taking special care with the doors and separate shelves. Open the cabinet doors and ensuring the power isn't connected, remove the screws on the front edge and lower the top cover. Take care not to lose the screws.
- 2) Using a spirit level, mark off a horizontal line approximately 40mm below where the top of the cabinet is to be. Position the bracket hole centres so that they are centred on the line, and ensure that the ends of the brackets are spaced to the width between the inner edges of the vertical aluminium extrusions (see illustration). Mark off the holes using a pencil.
- 3) Note: Wall plugs supplied are only suitable for solid stone / brick walls. For plasterboard walls use specialist wall plugs, available from DIY or hardware stores. Seek advice from a specialist about the suitability of fixings to be used. Drill the required holes and insert wall plugs.
- 4) Screw the brackets to the wall using the screws provided. Please ensure the screws are fully tight but take care not to overtighten. Two screws must be used in each bracket.
- 5) Before making any electrical connections (or performing any maintenance) it is necessary to turn off the mains electricity supply. This unit is provided with a supply

cable already fitted. This cable should be fitted to the household lighting circuit or to a fused 3 AMP supply. Connections should be made in accordance with the latest IEE regulations. This cabinet is manufactured to CLASS 1 and requires an earth connection.

- 6) Hang the cabinet on the wall brackets. The claws on the cabinet hangers must be securely located on the wall brackets. Using a spirit level adjust the angle of the cabinet by turning screw A with a cross head screwdriver. When the angle is properly adjusted, insert screw through the hole in the lower section of the cabinet backboard and mark the wall. Remove the cabinet from the wall, drill a suitable hole in the marked location and fit a wall plug. Re-hang the cabinet making sure to tighten screw B on both hangers and secure the base of the cabinet to the wall with the supplied screw and cover-cap. The cabinet should not be left unattended until it is fully secure.
- 7) When the cabinet is fully secure the internal top cover should be closed and secured with the small screws removed earlier. When the cover is closed and secure restore the mains power and test the function of the lights and the shaver socket. If the light fails to function properly it is likely the IR sensor has been positioned too close to an adjacent wall or reflective surface.
- 8) To fit the glass shelves insert the shelf supports in the desired positions starting with the top shelf. On the Summit (double door model) you will need to remove one of the doors so the shelves can be inserted. The door hinges feature a quick release

mechanism for ease of removal. Pull the lever towards the centre of the cabinet to release. Please be sure to adequately tighten the plastic screw at the bottom of the shelf support to prevent the shelf becoming loose. Blanking plugs supplied can be used to cover unused shelf holes.

- 9) The soft-close hinges offer adjustment in 3 directions via adjustment screws C,D and E (see diagram).