



**Bath filler waste and
overflow chrome
Product Code: BF125EXTD**



Installation & User Guide

Please retain this booklet for future aftercare reference



INSTALLATION

1. Identify all your core components and check the waste is complete.
2. Fit the waste body (7) to the underside of the bath and screw in top waste fitting (6) to through the bath securing it into the waste body (7) ensure seating washer (5) is placed under the bath before this is done using silicone sealant where necessary. Optional washer (4) may be fitted between the top waste fitting (7) and the bath, alternatively silicone sealant may be used in place of this.
3. Fit the chrome filler / overflow body to the bath ensuring overflow securing with the chrome filler / overflow. Ensure seating washer (13) (5) and cover plate (4) are in place, secure with overflow fixing bolt (3), is placed between bath and filler overflow body using silicone sealant where necessary. Ensure recess washer is placed between bath and chrome filler / overflow using silicone sealant where necessary.

For water inlet connections please remove either of the inlet blanking plugs (11) and make a suitable connection using a 1/2" BSP male thread adaptor.

NB - To increase performance and achieve an optimum flow rate both inlets could be used.

- 4 .Check all joints and connections for leaks.
5. See over the page for aftercare instructions.

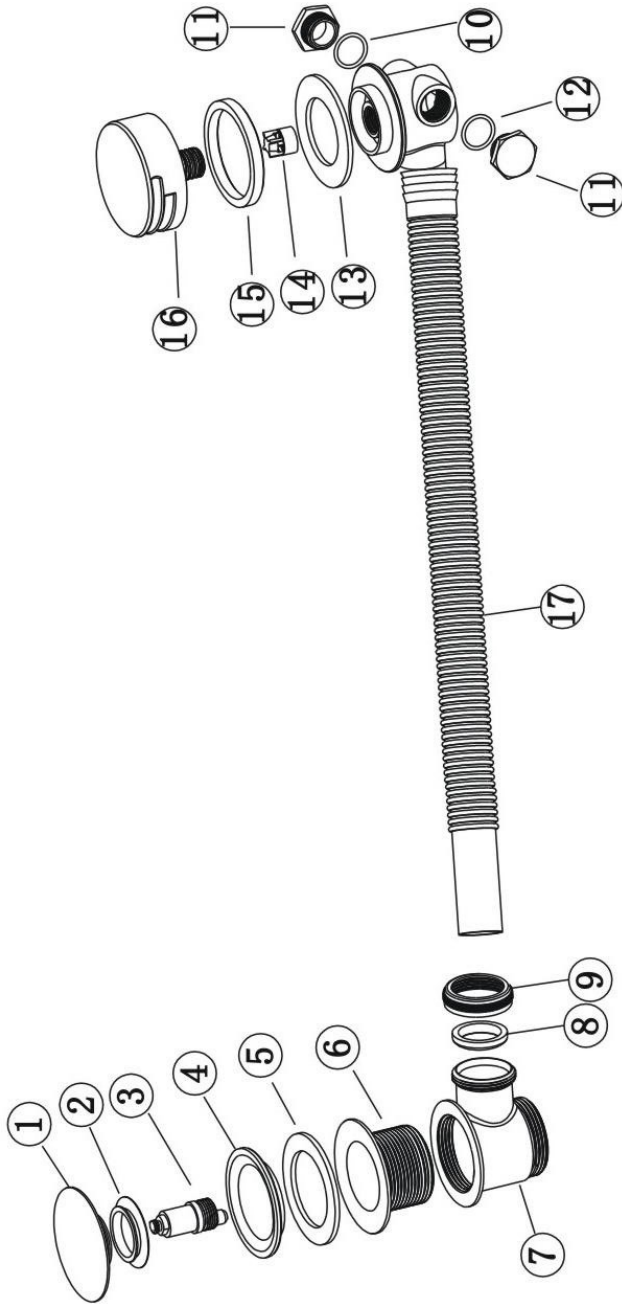
NB - If no water passes through the chrome filler unit check the non-return valve (14) for debris.

COMPONENTS

1. WS116 DOME PLUG
2. WS133 SEALING WASHER
3. WS100 CLICKER MECHANISM
4. WS111 BLACK RUBBER WASHER
5. WS137 BLACK FLAT WASHER NO.4
6. WS138 TOP WASTE FITTING
7. WS139 BOTTOM WASTE FITTING
8. WS140 WASET PE SEALING WASHER
9. WS141 BRASS LOCK NUT
10. WS111 BLACK RUBBER WASHER
11. WS142 INLET BLANKING PLUG
12. WS143 O'RING FOR INLET BLANKING PLUG
13. WS144 SEATING WASHER
14. WS145 NON RETURN VALVE
15. WS146 RECESS WASHER FOR FILLER PART
16. WS147 CHROME FILLER / OVERFLOW UNIT
17. WS206 OVERFLOW PIPE

To order spare part please call our technical helpline on 01892611240 selecting option 2

EXPLODED COMPONENT VIEW



AFTERCARE INSTRUCTIONS

This waste fitting has a high quality finish and therefore should be treated with care to preserve the chrome plated surfaces. All surface finishes will wear if not cleaned correctly, the only safe way to clean your waste is to wipe with a soft damp cloth. Stains can be removed using a neutral washing up liquid. All bath cleaning powders and liquids will damage the surface of your fitting (even the non-scratch cleaners).

GUARANTEE

All products are manufactured to the highest standards and a 10-year guarantee covers any defect in manufacture. If you should experience any problems with your waste, contact our technical help line quoting the product or component code. All working parts such as seals, which are subject to normal wear and tear, are covered for 12 months from proof of purchase date.

Pura Bathrooms Limited
15 Millbrook Industrial Estate
Crowborough
East Sussex
TN6 3DU

Office Tel: 01892 611240
Office Fax: 01892 613000

Email: sales@purabathrooms.com
technical@purabathrooms.com

Website: www.purabathrooms.com