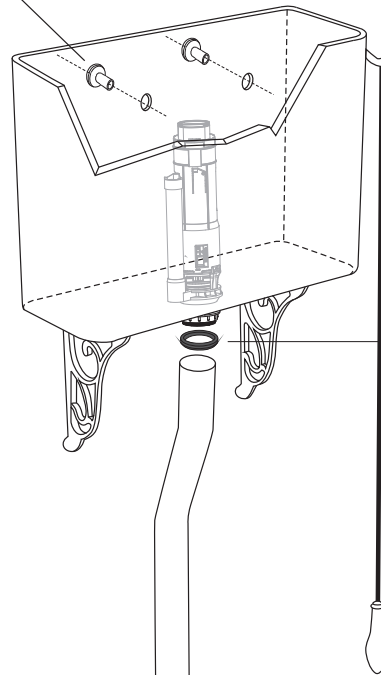


The Wyndham Collection

INSTALLATION DIAGRAM - T10142H

① Wallhang fixing washer



② Top seal washer

③ Connecting seal rubber

④ Flow regulation washer
(must be fitted to prevent splashing)



A1420 Fill Valve Installation Instructions – T10142H

Installation Drawing

Refill tube (A refill tube is optional based on the user's requirements)

Instructions

- 1). Please read carefully the following installation instructions in order to avoid component damage or injury to the installer.
- 2). The instructions have been composed based in the latest product specifications. We reserve the right to make modifications to the packaging and specifications without providing prior notification.
- 3). When installing the fill valve, the critical level on the fill valve (identified on the valve marked "CL") should be at least 1" (25.4mm) above the top of the overflow pipe of the flush valve. This is a plumbing code.
- 4). We shall not be responsible for failures that are contributed to the use of parts other than those specified.
- 5). Water Temperature: 2 °C to 45 °C
- 6). Water Pressure Range: 0.02Mpa (0.2 Bar) to 0.8Mpa (8 Bar)

Warning

DO NOT USE OR DROP ANY CHLORINE OR ANY CHEMICAL RELATED COMPONENTS. USE OF SUCH PRODUCTS WILL:

- (1) RESULT IN DAMAGE TO TANK COMPONENTS AND MAY CAUSE FLOODING AND PROPERTY DAMAGE AND
- (2) VOID WARRANTY.

DO NOT OVERTIGHTEN NUTS, OR TANK/BOWL MAY CRACK.

I、 Work Preparation: Remove the inoperative tank fittings and carefully clean the water cistern/tank. Make sure all debris has been removed prior to installing new tank fitting.

II、 Fill Valve Installation

①

Remove the hexagonal nut and next remove the plastic gasket and flat seal

②

Place the inlet valve into the side-mounting hole of cistern/tank. Install the flat seal, then the plastic gasket (optional) and tighten the hexagonal nut. Recommended torque is 2~3 N.M.

③

Connect water supply into inlet shank - turn on the water supply valve (angle stop) (Make sure that refill tube has been inserted in the flush valve overflow pipe in the event the toilet requires refill to the bowl).

④

Check if the inlet valve is under normal operation and adjust the inlet valve float adjustment thumbscrew clockwise (for higher float & water level) or anticlockwise (for lower float & water level) according to the requirements.

⑤

Water level should not be higher than overflow at adjustment.

III、 Cleaning Filter (Filter which is located inside the inlet valve shank is required for cleaning periodically)

①

Shut off the water supply valve (angle stop) then remove the water supply line from the inlet a adaptor.

②

Remove the filter screen from the inner connector of the shank

③

Clean the filter screen with water

④

Re-install clean filter back into the inner portion of the shank

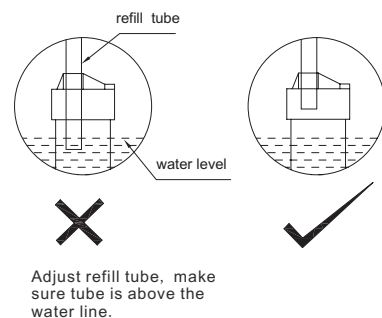
⑤

Connect water supply into inlet shank, turn on the water supply valve (angle stop).

IV、 Troubleshooting

Issue	Cause	Resolution
Water line is too high or too low	Inlet valve is not adjusted to a suitable position	Adjust the water level to the appropriate water level
Inlet valve does not shut off	1) Water supply valve/angle stop is off. 2) The cistern/tank wall has blocked the movement of the inlet valve float. 3) Filter screen is dirty	1) Turn on the water supply valve/angle stop. 2) Adjust the fill valve to the appropriate position and make sure float can move freely. 3) Clean filter screen
Inlet valve does not turn on	1) The cistern/tank wall has blocked the movement of the inlet valve float. 2) The refill tube wasn't installed properly. 3) Leakage of flush valve. 4) The water level is above overflow pipe of flush valve.	1) Adjust the fill valve to the appropriate position and make sure float can move freely. 2) See figure attached to re-install refill tube correctly. 3) Make sure none leakage of flush valve. 4) Re-adjust water level and installation height to appropriate position.

Installation of refill tube :

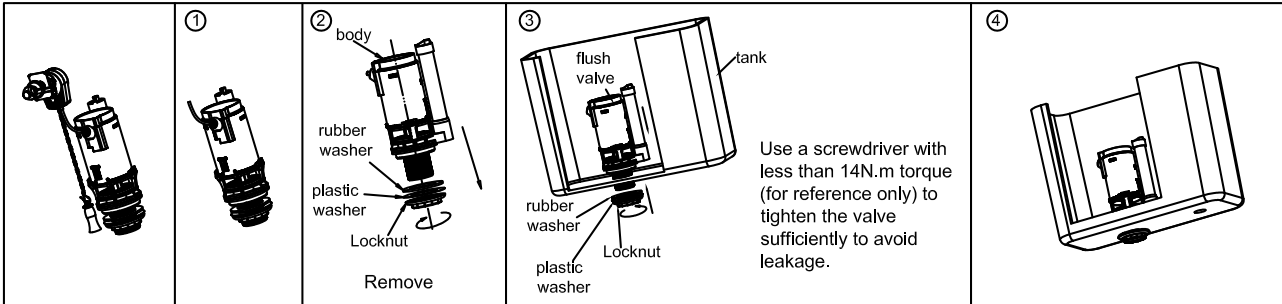


A24326 Flush Valve Installation Instructions – T10142H

Work Preparation: Remove the inoperative tank fittings and carefully clean the water cistern/tank. Make sure all debris has been removed prior to installing new tank fittings.

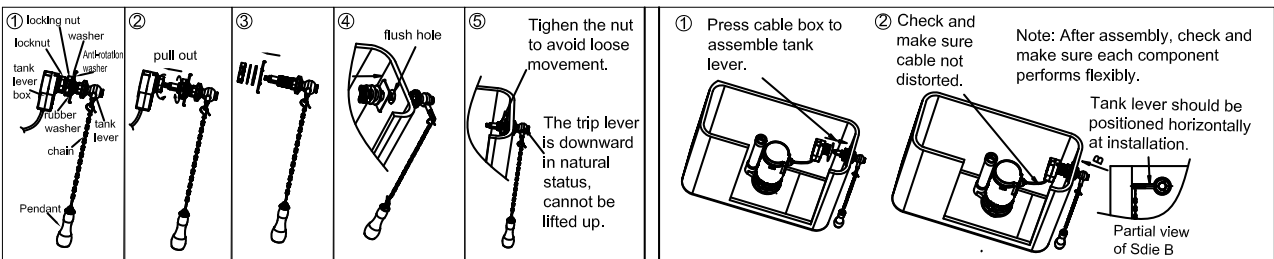
- Note : 1. This device is not intended to be used as retrofit device for 1.28 gpf water closet.
2. Performance may vary since product was not tested on all models of water closets.

I. Installation of Flush Valve Into Toilet Tank.



II. Installation of Tank Lever Into Toilet Tank

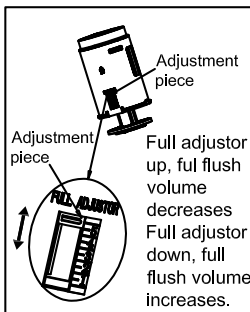
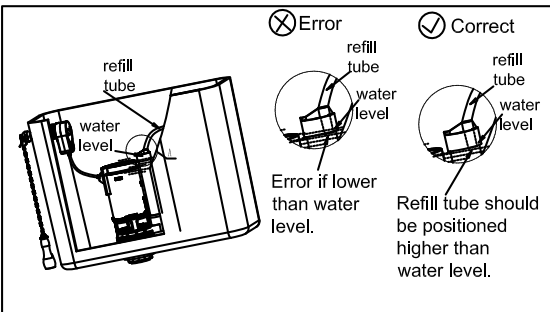
III. Installation of trip lever and lever box



IV. Refill tube installation and adjustment (Note: A refill tube is optional based on the user's requirements.)

V. Adjustment of flush volume

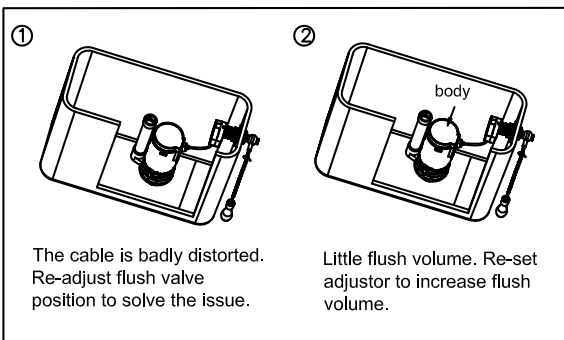
Warning



DO NOT USE OR DROP ANY CHLORINE OR ANY CHEMICAL RELATED COMPONENTS. USE OF SUCH PRODUCTS WILL (1) RESULT IN DAMAGE TO TANK COMPONENTS AND MAY CAUSE FLOODING AND PROPERTY DAMAGE AND (2) VOID WARRANTY. DO NOT OVERTIGHTEN NUTS, OR TANK/BOWL MAY CRACK.



VI. Little or no flush volume



Instructions

- Please read carefully the following installation instructions in order to avoid component damage or injury to the installer.
- The instructions have been composed based in the latest product specifications. We reserve the right to make modifications to the packaging and specifications without providing prior notification.
- When installing the fill valve, the critical level on the fill valve (identified on the valve marked "CL") should be at least 1" (25.4mm) above the top of the overflow pipe of the flush valve. This is a plumbing code.
- We shall not be responsible for failures that are contributed to the use of parts other than those specified.
- Water Temperature: 2°C to 45°C
- Water Pressure Range: 0.02Mpa (0.2 Bar) to 0.8Mpa (8 Bar)

VII. Leaking

