

# Technical Data Sheet

Product Name: Torrent Concealed Cistern

Product Code: TR9001

**trade**

bathroom products

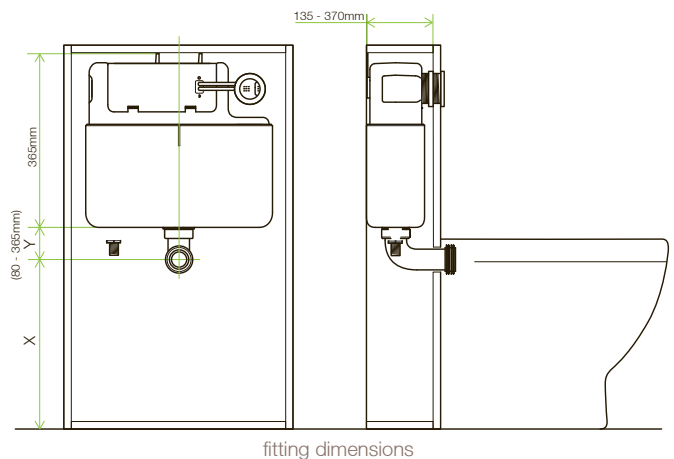
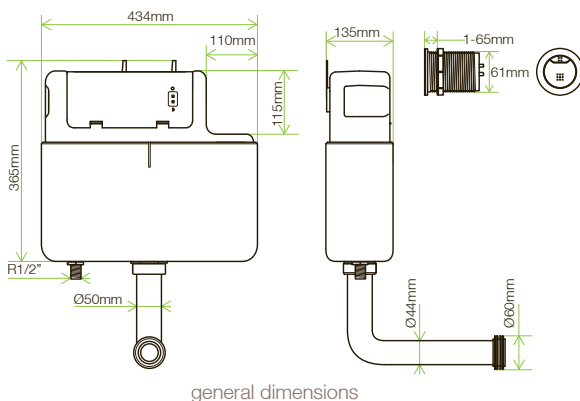


## Key Features

- pre-assembled concealed cistern
- 3/6 litre adjustable flush option
- pneumatic flush valve and push button operation
- bottom entry inlet valve
- top & front access
- 0.2-10.0 bar working pressure range
- 90° flushpipe for neat installation
- polystyrene insulation jacket

## Dimensions

Diagrams not to scale  
All dimensions in mm  
tolerance of +/- 5mm



## FAQ's

**What is the length of the flush inlet pipe to the pan?** 390mm.

**What is the length of the push button hoses?** Approx 700mm.

**What is the vertical length of the flush pipe to the tank?** 400mm.

**Why does the big (full flush) button go down when pressing the small (1/2 flush) button?**

This is normal due to the button mechanism - the bellows closes the full flush compartment to reduce the total flush.

**When the button is pushed it won't go in or flush?**

Check the hose connections from the back of the button to the valve.

# Trouble Shoot Guide

## Torrent - Slimline Concealed Cistern

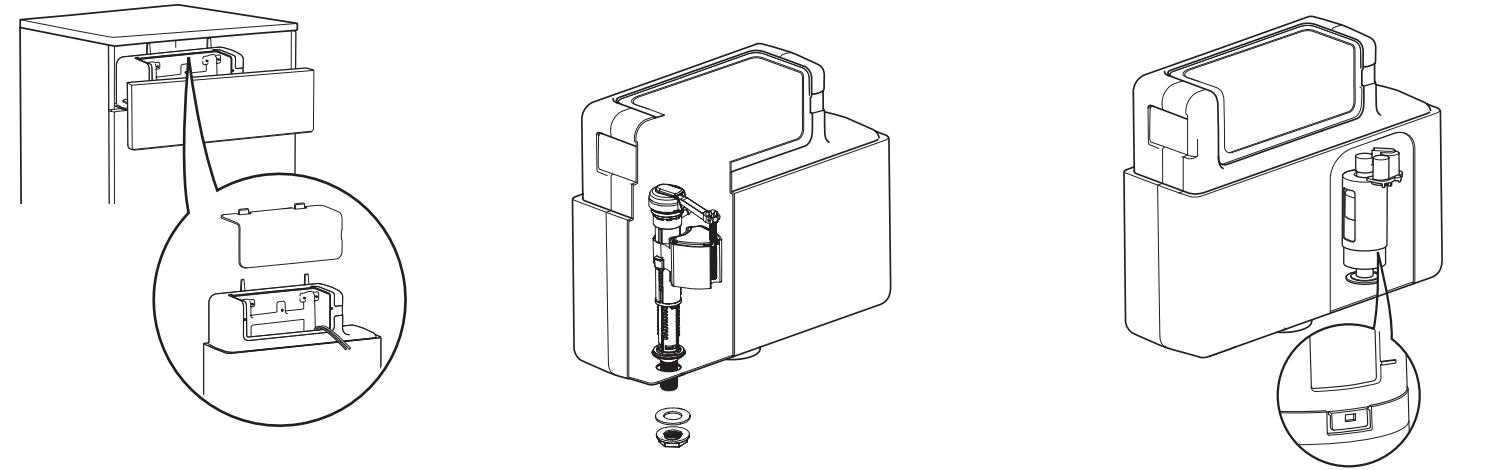
Please retain for future reference

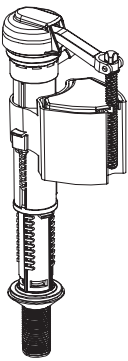
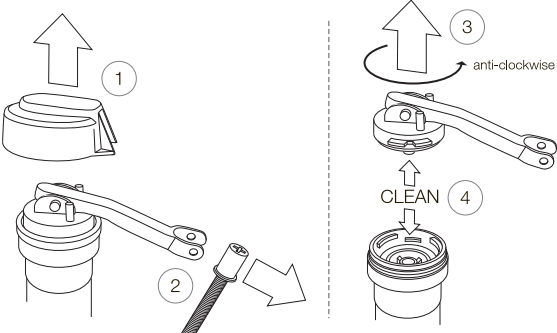
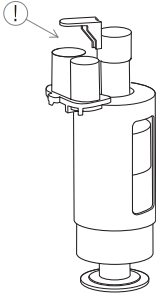
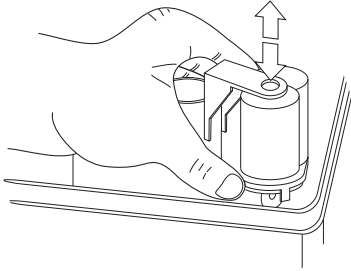
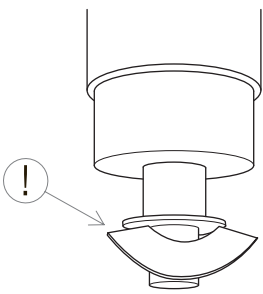
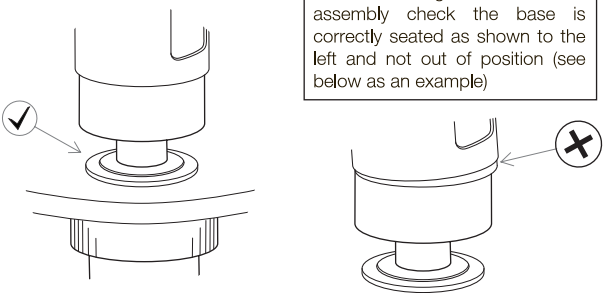
Δ TR9001

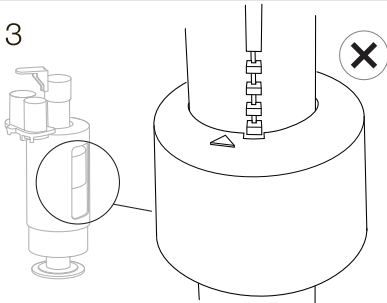


### How to Access your cistern

1. Remove fascia panel
  2. Remove the blue cover on the cistern
1. Shut off Water Supply
  2. Unscrew the nut from the flexible hose
  3. Pull out the fill valve
1. Gently twist & remove flush valve (anti-clockwise)



Problem	Potential cause	Suggested action
The Fill Valve does not work or isn't controlling the water supply efficiently.	<p>The flush valve may be blocked.</p> 	<p>Follow the instructions below and clean the water inlet orifice and cap. If unsuccessful, replace the fill valve with a new one.</p> 
Water leaks from the base.	<p>1 The flush valve stem may be obstructed or jammed, preventing it from falling back into position.</p> 	<p>Ensure that there is nothing obstructing the flush valve and the stem can extend up and down.</p> 
	<p>2 The rubber gasket may have fallen off or could be damaged.</p> 	<p>Ensure the rubber gasket is fixed in position. However, If it's damaged a replacement is needed.</p> <div> <p>NOTE: Before re-fitting the flush valve assembly check the base is correctly seated as shown to the left and not out of position (see below as an example)</p>  </div>

Problem	Potential cause	Suggested action
Water leaks from the base. (Continued)	<p>3</p> 	<p>Ensure the rotation of the blue float component is in the correct position.</p> <p>If it isn't (as shown left) the blue float component can catch on the adjustment measure</p> 
The flush valve does not work properly.	<p>The pneumatic tubes may have been installed incorrectly.</p> 	<p>Ensure the following:</p> <p>The blue tube must be connected to the joint marked with a half circle,</p> <p>The transparent tube should be connected with the joint marked with a full circle.</p> 
The pan washer is leaking.	<p>The cistern may have been installed in an incorrect position causing the flush bend to pull out of position.</p> 	<p>Ensure the cistern is in the correct position and ensure the flush bend is fully connected to the pan.</p> <p>Please see the instruction manual provided for fitting instructions.</p> 
Water leaks between the cistern and base	<p>The nut connecting the flush bend with the cistern body may not be tightened sufficiently.</p> 	<p>Ensure the nut is fully tightened</p> 
The pneumatic push button doesn't reposition itself once pressed downwards	<p>It may be a fault with the air compression or the button itself could be broken</p> 	<p>Check the pneumatic tubes are connected efficiently. If the button is faulty then it will have to be replaced with another one.</p> 

**trade**

bathroom products

## Technical Bulletin - On Site product adjustment guidance.

**Product:** Torrent / Vortex family of cisterns.

**Functional problem:** Flush / drop valve not closing.

**Affected Products:** TR9001 (Torrent), TR9002 (Cascade), VOR790 (Vortex), APX790 (Apex), 238CYC (RL Cyclone), TR9005/WHT082 Furniture WH Frame

1) Image description of correctly functioning valve :

Snap Hook located in middle of slot

Valve drops up and down freely



2) If base part of flush valve assembly is slightly twisted, then the snap hook is not engaged in slot. This causes the flush valve to stick and not drop back down with gravity when push button is released.



Valve sticks in place and does not drop with gravity



**THIS MIGHT BE IDENTIFIED AS THE FLUSH CONTINUES WHEN THE BUTTON HAS BEEN RELEASED OR PUSH BUTTON STICKS.**

## Technical Bulletin - On Site product adjustment guidance.

3) To solve the problem simply twist the base back so that the snap hook is in place in the middle of the slot. Then the drop valve works freely again.



The flush valve is easily removed from the cistern by quarter turning the flush valve anticlockwise and removing the air tubes from the blue cover on the cisterns (or directly from the push plate on WH Frames).

Once the installer has verified that the valve is dropping up and down freely, then it is simply a case of dropping the valve back into the cradle inside of the cistern tank and twisting clockwise to lock into place. No tools necessary. Re – connect the air tubes again making sure that the blue tube connects to the spigot with the half moon symbol on the blue cover for half flush.

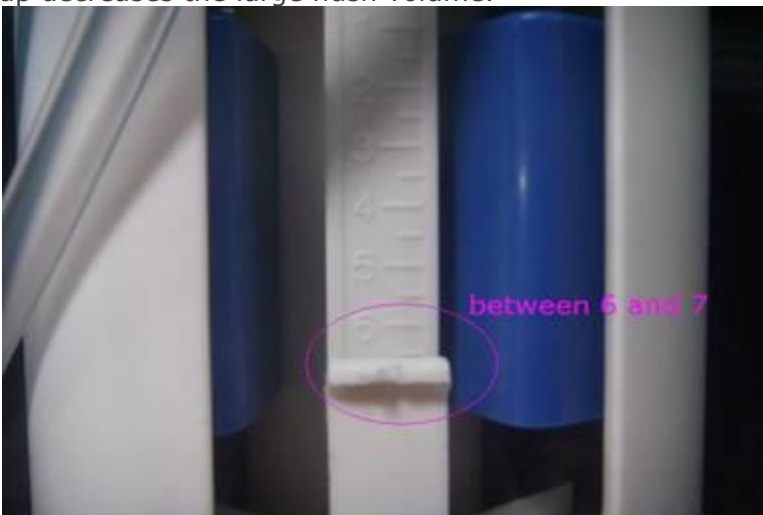
## Torrent / Cascade flush volume adjustment TR9001 / TR9002

The factory default settings should be as follows for 3/6L flushing:

- The blue float controls the **small flush volume**. This should be pre-set '6 buckles' down. Moving it further down increases the small flush volume and up decreases the small flush volume.

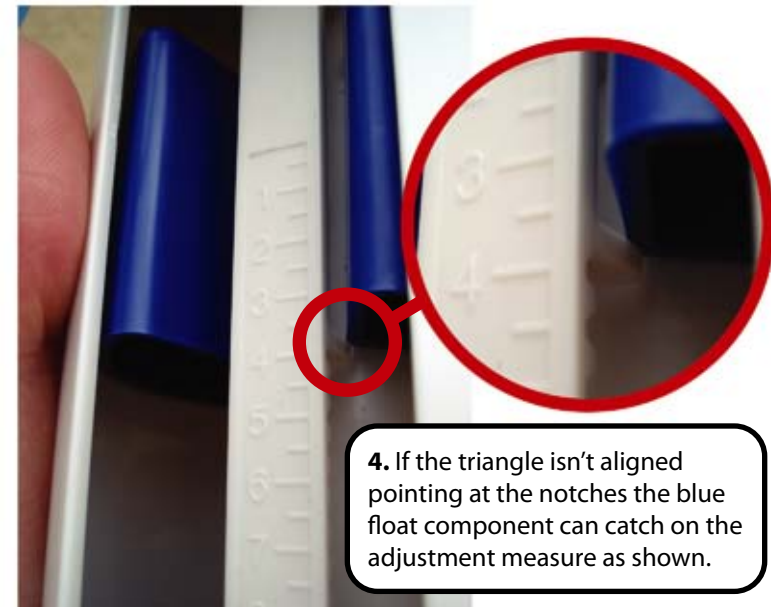
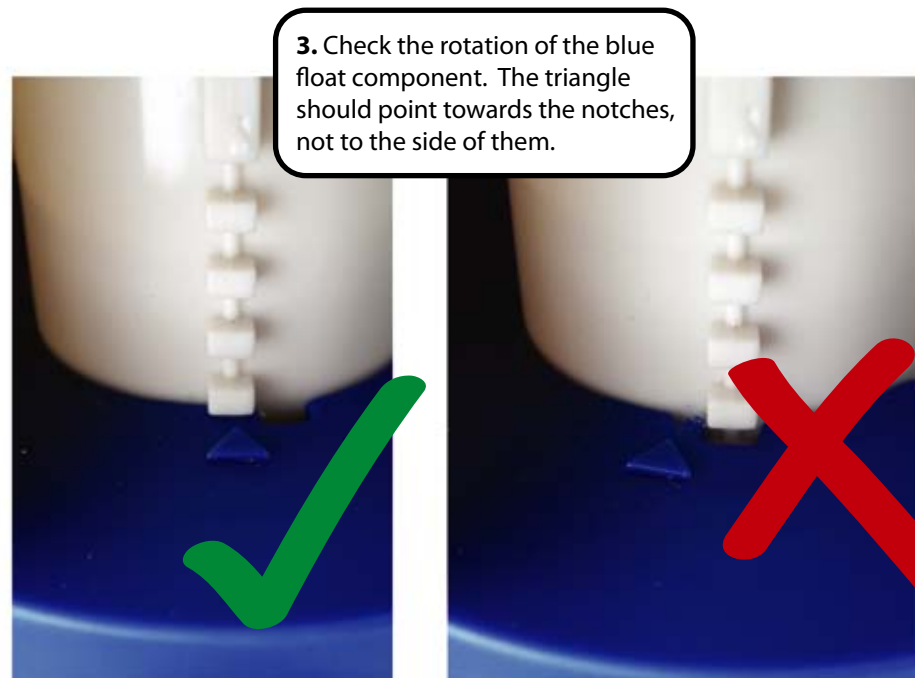
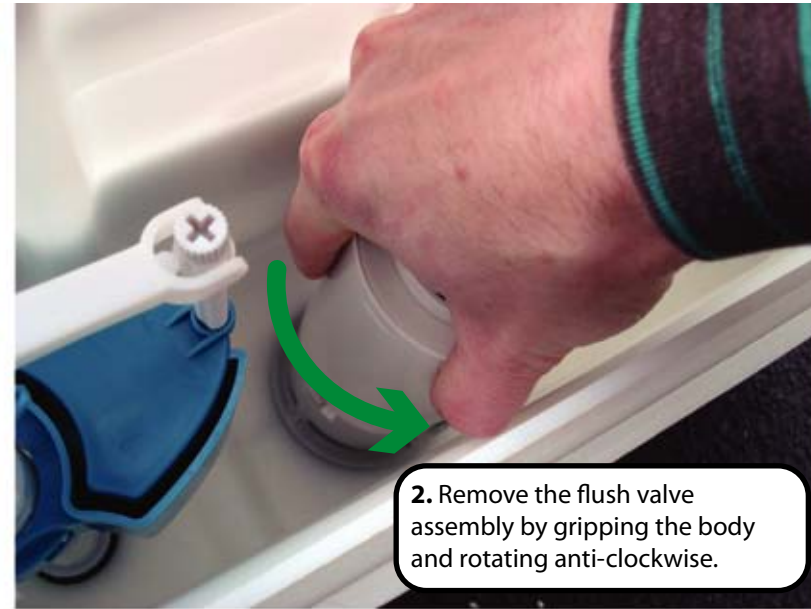


- The white plastic slider controls the **large flush volume**. This should be pre-set to between 6 & 7. Moving it further down increases the large flush volume and up decreases the large flush volume.



# TORRENT/CASCADE concealed cistern - TR9001/TR9002

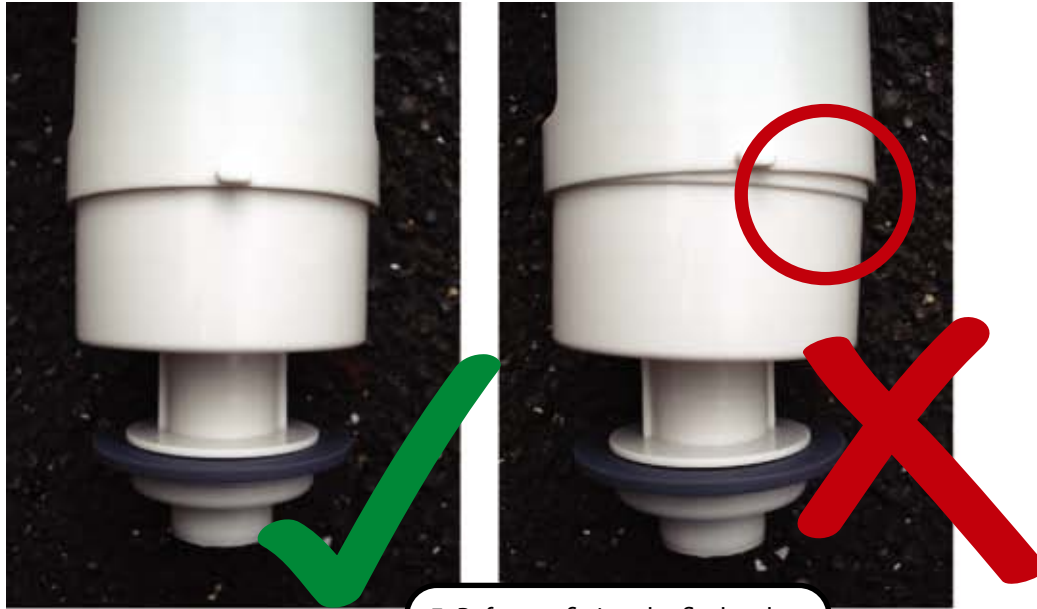
## Jamming flush valve - Troubleshooting guide



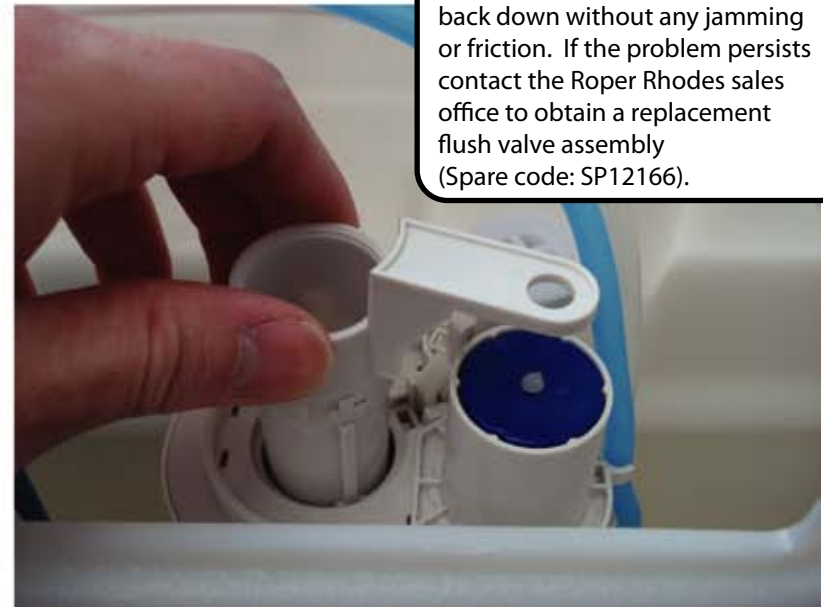


# TORRENT/CASCADE concealed cistern - TR9001/TR9002

## Jamming flush valve - Troubleshooting guide



**5.** Before re-fitting the flush valve assembly check the base is correctly seated as shown. Also check there are no damaged (e.g. snapped) components.



**6.** Once re-fitted lift the flush valve piston and release, it should drop back down without any jamming or friction. If the problem persists contact the Roper Rhodes sales office to obtain a replacement flush valve assembly (Spare code: SP12166).