

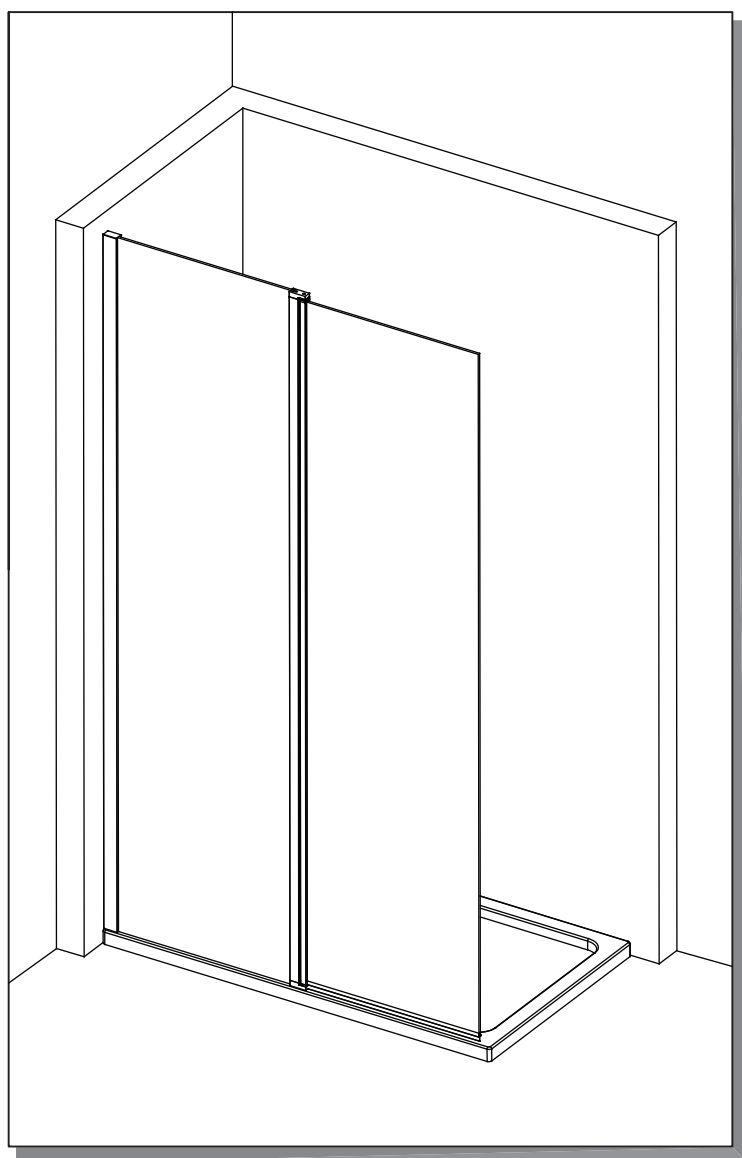
# wetroom

## Flipper Panel

AQUA  
DART

### INSTALLATION INSTRUCTIONS

[www.aquadart.co.uk](http://www.aquadart.co.uk)



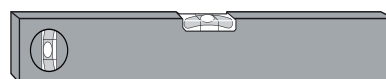
#### Tools Required



**Drill**



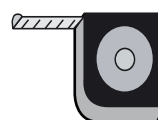
**8mm Masonry Drill  
2.75mm HSS Drill**



**Spirit level**



**Sealant Gun**



**Tape Measure**



**Pencil**



**PH2 TYPE  
Screwdriver**

Please note hand tools **NOT** supplied.

#### IMPORTANT

The screen can be constructed either way up, for left or right hand opening.

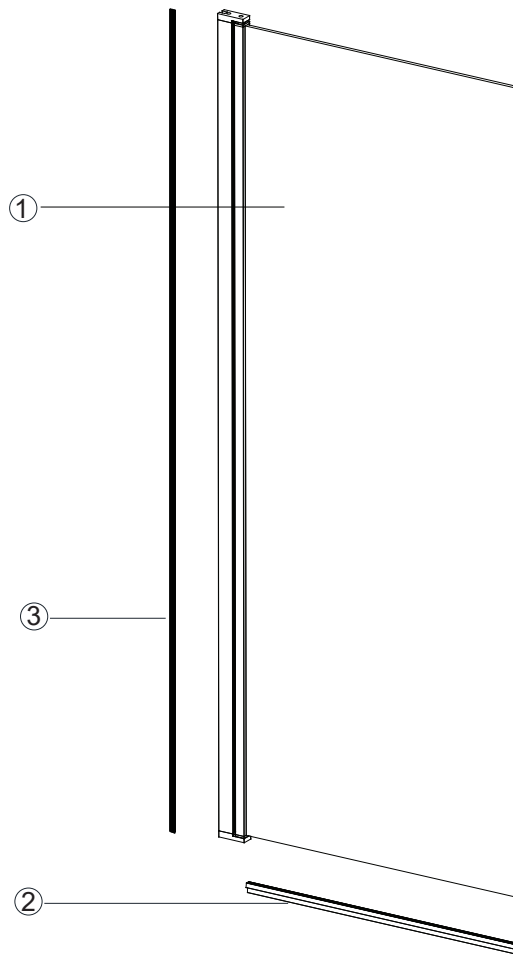
These instructions assume that installation is done against solid/tiled walls.

The wall plugs supplied with the installation kit are for use on solid walls. Hollow or stud -partition walls will require alternative fixings. Please consult with a reputable trades person or hardware supplier for the correct type of fixing.

It may also be necessary to consult your tiling supplier about the correct method for drilling your tiles.

Please check this product for damage prior to starting the installation. No claims can be made after the product has been fitted. This is a 2 person installation. Please note the minimum and maximum adjustment for this product are based on perfectly plumb walls.

**USE SAFETY EYE-WEAR WHEN DRILLING**

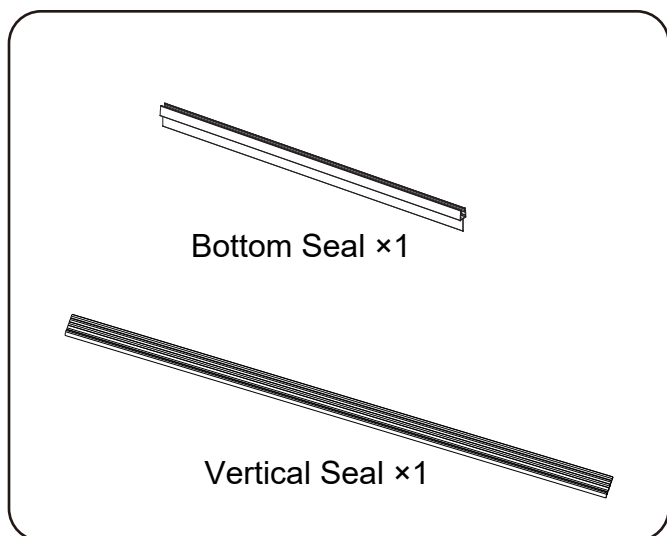


### Box Contents

SN	Description	Qty
1	Return Panel	1
2	Bottom Seal	1
3	Vertical Seal	1

**Note:** Further part details for fixing kit available on page 2

## FIXING KIT



---

### IMPORTANT - Missing Components

Please check this product for missing components prior to installation.

For spare parts visit [www.aquadart.co.uk](http://www.aquadart.co.uk)

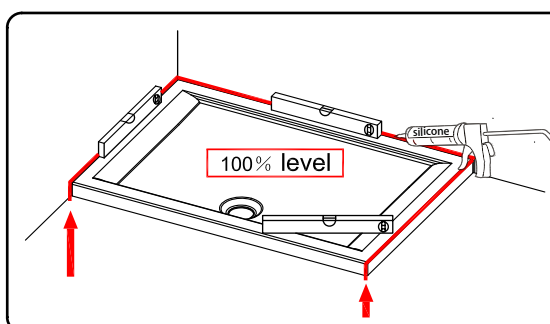
---

### IMPORTANT - Installation site

1. Ensure the top surface of the shower tray on which the enclosure will be installed is level in every direction.
2. The tiles or other wall finishing should be effectively sealed at tray edges.
3. Tiles should extend at least to the corner of the tray and a minimum of 1.9 metres from the top of the tray.

---

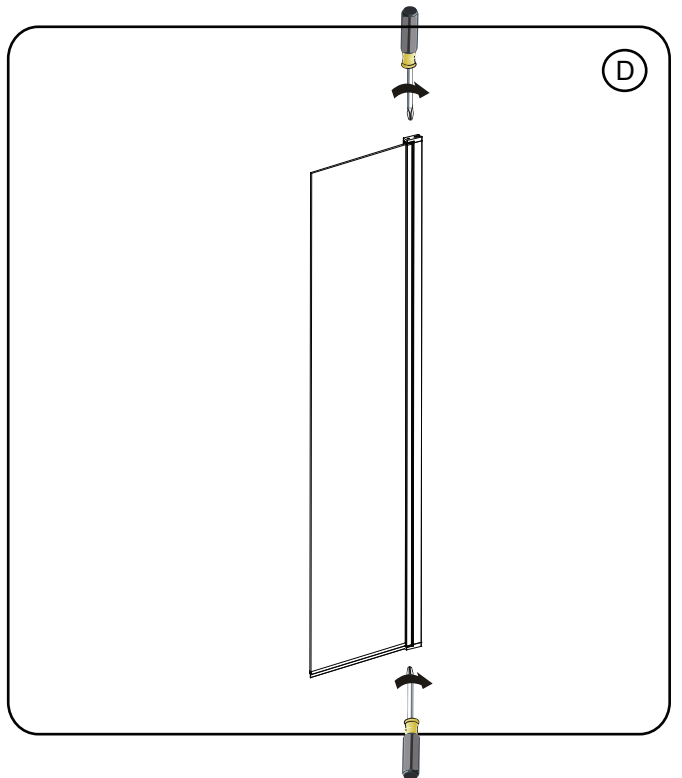
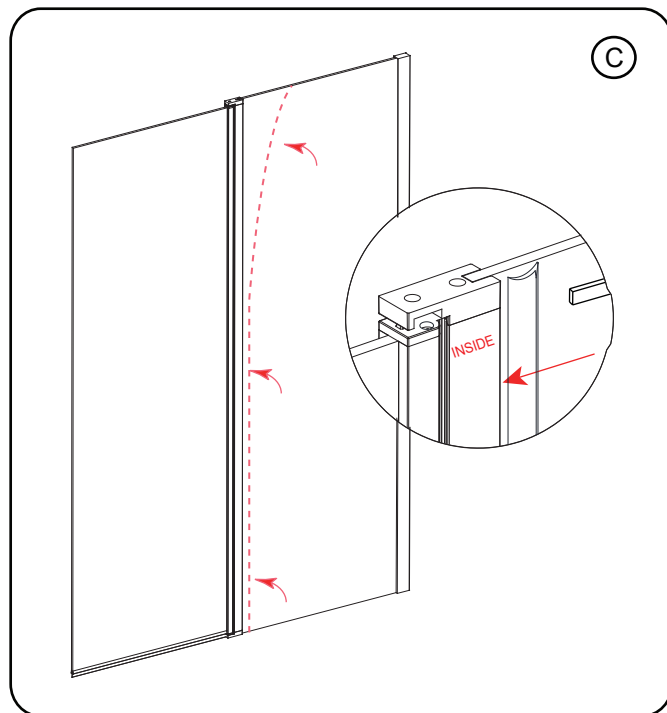
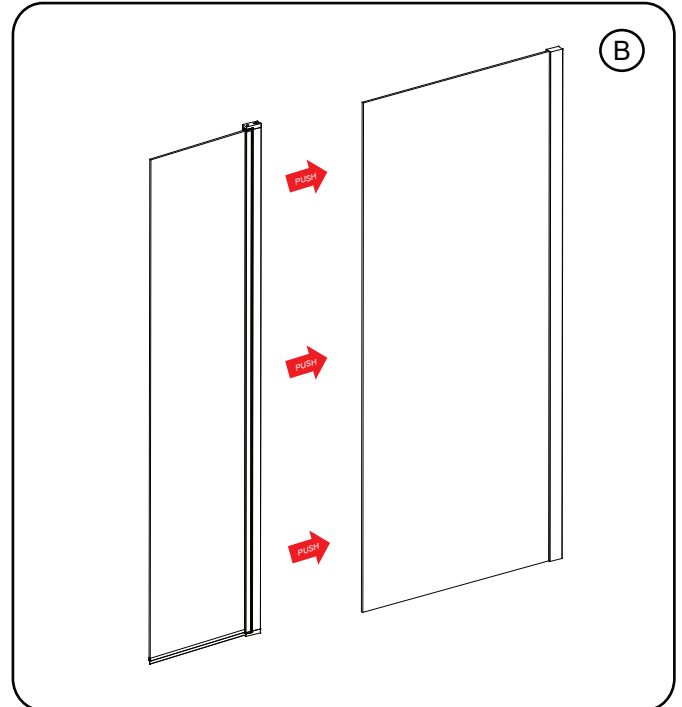
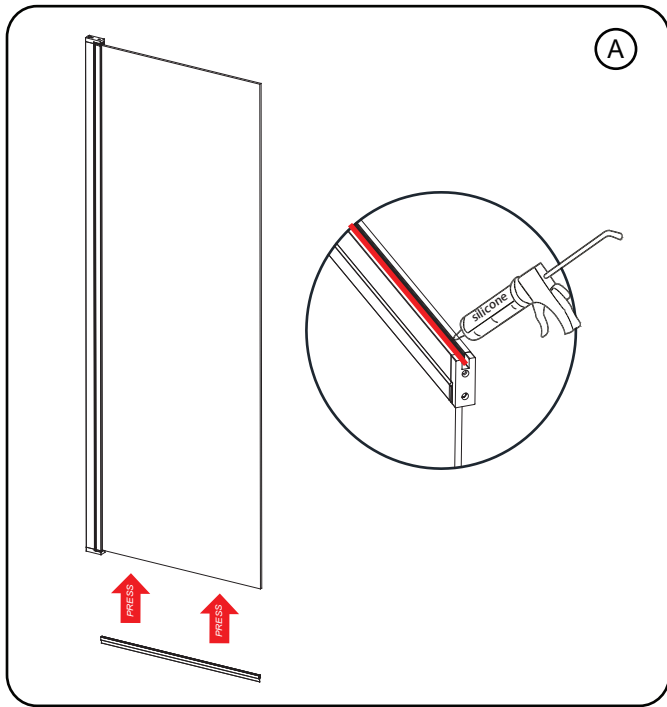
### PROCEDURE



#### TRAY MUST BE 100% LEVEL IN ALL DIRECTIONS

Ensure the shower tray is level in all directions and is properly sealed to the wall. The wall must be tiled down to the top edge of the tray. **Do not angle out bottom tile.**

**TRAY MUST BE SEALED FULLY AROUND WHERE THE TRAY MEETS THE WALL.**



## Step 1.

Press the seal onto bottom edge of the return panel glass then insert silicone into the groove of the upright profile(Diagram A).

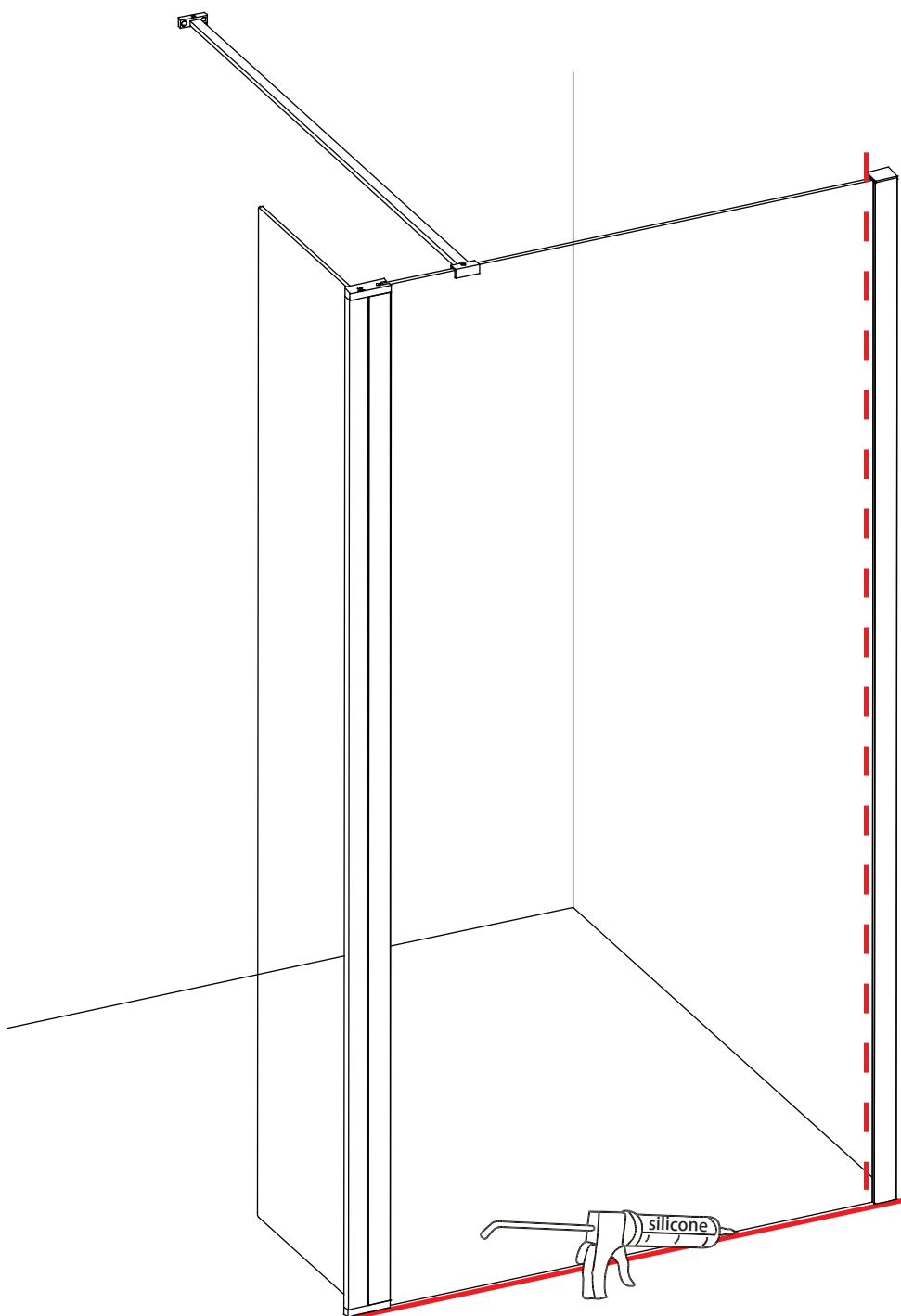
## Step 2.

2.1 Push the return panel to the Wetroom glass panel,ensure the cut of the hinges placed inside. (Diagram B)

2.2 After the glass panel is in its final position,press the seal into the profile securing from bottom to top (Diagram C).

**Note:**Follow the below steps to assemble the return panel into a **right** hand version. The return panel is pre-assembled in left hand format.

**Loosen the top and bottom hinge from the return panel then refit the original top hinge to bottom and original bottom hinge to top.(Diagram D)**



24 HRS



**DO NOT USE THE ENCLOSURE FOR 24 HOURS AFTER SEALING**

## Applying Silicone Sealant

### Sealing Inside

Seal from the top of the wall profile to the bottom on the **INSIDE** between the wall profile and the wall.

**IMPORTANT:** Do not apply sealant on inside of the tray.

### Sealing Outside

Seal from the top of the wall profile to the bottom between the wall profile and tiles on both sides. Also seal along the bottom where the glass meets the tray.

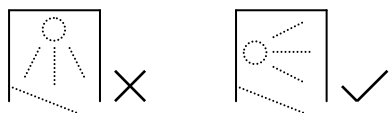
## AFTERCARE

### Cleaning Instructions

It is important to clean your Aquadart shower enclosure after every use. Please wipe down all glass and metal parts with a clean soft cloth. Ensure that all residual water on the glass is removed after every use.

### Usage

For reliable, watertight performance from your Aquadart enclosure your shower head should not be positioned so that the shower sprays directly onto the enclosure door. Failure to comply with this may cause the shower to leak. Outward opening doors may cause water to drip onto the floor, please ensure that the floor covering immediately outside the enclosure will not be affected by water.



This product has been treated with Clean & Clear™ easy clean glass treatment, a protective barrier which creates a 'non-stick' surface on your glass, helping to resist lime scale build up and water spots. For further information on Clean & Clear™ please visit [www.aquadart.co.uk](http://www.aquadart.co.uk)

### Aftercare

Clean & Clear™ glass can be cleaned with any suitable nonabrasive glass cleaner - with PH value of between 3-11; the coating will not be damaged. Avoid surfactants and heavily perfumed products. Vinegar and water based products are very effective. Do not use abrasive scrubbing cleaners or equipment for cleaning.

### Warranty

Limited 5 year Warranty for Clean & Clear™ treatment: To guarantee treated surfaces will remain more repellent than untreated glass for 5 years from start of use, as long as basic manufacturer maintenance recommendations are followed and no harsh or abrasive cleaners are used.

#### AQUADART PRODUCTS

North Dean Road, Keighley, West Yorkshire, BD22 6QY

For technical / aftersales queries, please visit our website : [www.aquadart.co.uk](http://www.aquadart.co.uk)

or Sales Tel : 0845 0262 55 Fax : 01535 613831 Technical : 01535 613860

