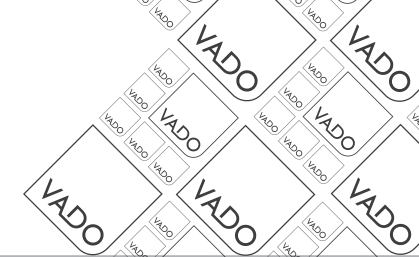




where inspiration flows

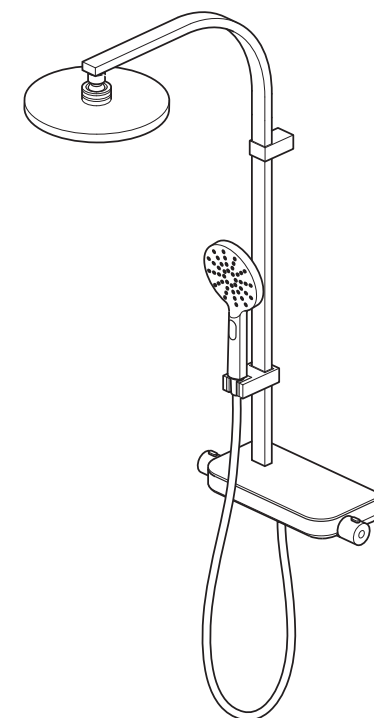


## Installation Guide

Thermostatic shower valve with rigid riser and shelf

This instruction booklet covers model:  
STRA-149RRK-CP.

STRA-149RRK-CP



Vado  
Wedmore Road, Cheddar, Somerset, England BS27 3EB  
tel 01934 744466. fax 01934 744345  
aftersales@vado.com  
www.vado.com



## Important - please read

Please read these instructions carefully before starting installation and keep for future reference.

Remove all packaging and check the product for missing parts or damage before starting installation.

Any alterations made to this product and fittings may infringe water regulations and will invalidate the guarantee.

The installation must comply with all Local/National Water Supply Authority Regulations/Byelaws and Building and Plumbing Regulations.

To be installed in accordance with BS EN806.

We strongly recommend that you use a qualified and registered plumber.

## General installation

This fitting is a mixing device and therefore water supplies should be reasonably balanced.

When installed, the fitting must comply with the requirements of the Water Supply (Water Fittings) Regulations 1999 and Scottish Byelaws 2004.

For further information, contact the Water Regulations department of your local water supplier (see the WRAS website [www.wras.co.uk](http://www.wras.co.uk) for details) or the Water Regulations Advisory Scheme by email ([info@wras.co.uk](mailto:info@wras.co.uk)) or telephone: 01495848454.

Before making any inlet pipe connections, all supply pipes MUST be thoroughly flushed to remove debris. Failure to do so could result in damage or low flow from the mixer unit. Water Supply (Water Fittings) Regulations 1999 Schedule 2 Section 13.

The fitting of isolating valves to the inlet feeds is advised for ease of maintenance.

Please take great care when installing this mixer not to damage its surface.

Please note if installing in an enclosed environment, access should be left for servicing and maintenance. No costs relating to inadequate access can be accepted.

## Operating Specifications

### Operating Pressure

**Minimum operating pressure** 1 bar

**Maximum operating pressure** 5 bar

## Commissioning

The valve has been factory set under balance pressures and hot water supply at 65°C. When your specific operating conditions are significantly different from the above, the temperature of the water may vary from the setting.

When the difference is too great, you can adjust the calibration of the valve to suit individual requirements of the installation:

1. Check the temperature of the water being delivered from the outlet with a thermometer.

**Note:** temperature readings should be taken at normal flow rate after allowing for the system to stabilise.

2. If the temperature is not 38°C proceed to reset the calibration as follows.

Remove the handle.

Ensure the step on the stop ring is located at 12 o'clock.

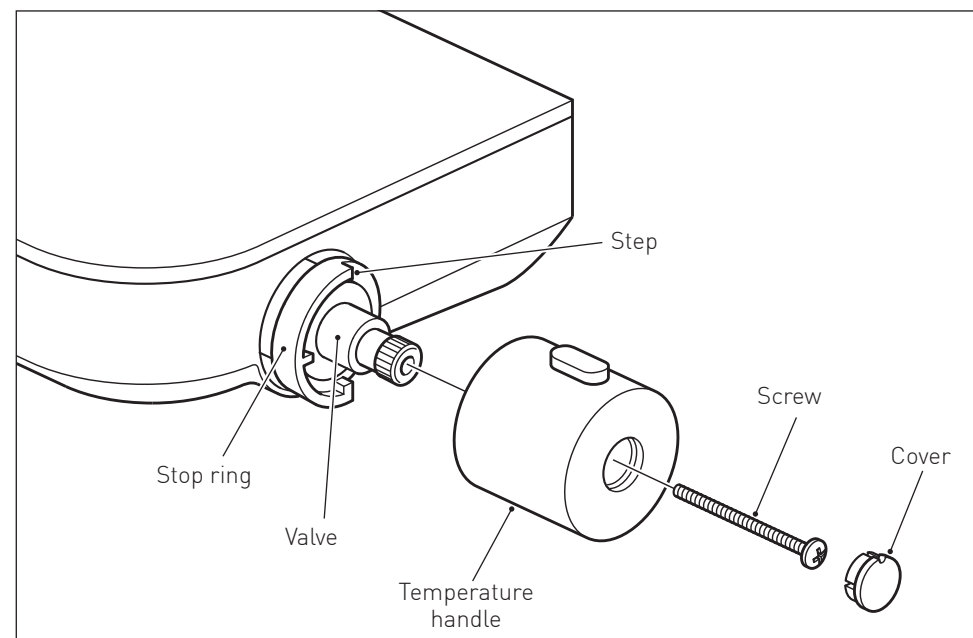
Do not remove the plastic stop ring. Turn the spline of the thermostatic valve clockwise to decrease the temperature and anti-clockwise to increase the temperature until 38°C is achieved at outlet.

**Note:** the sensing part of the thermometer probe must be fully submerged in the water that is to be tested.

Replace the handle making sure that the pin is against the step.

Once the handle has been attached ensure the temperature does not exceed 46°C when turned entirely anti-clockwise.

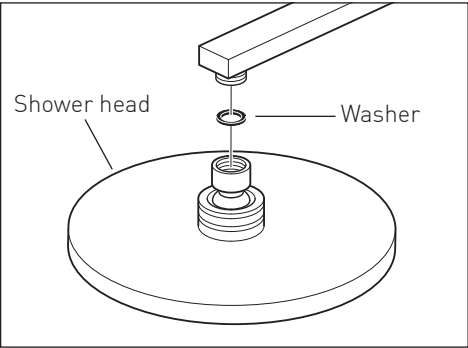
Your valve setting is now commissioned.



# Installation - Shower hose

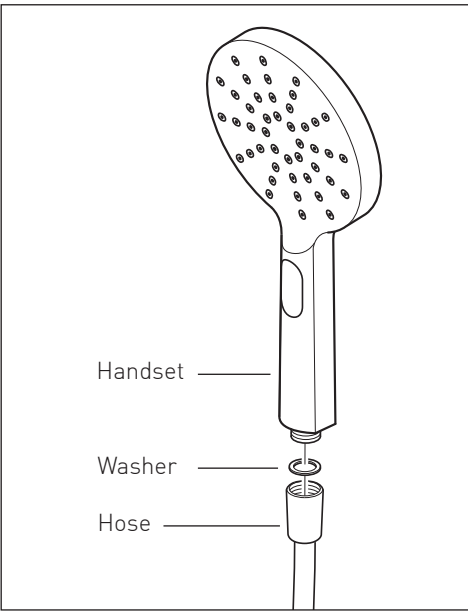
## Shower head

Make sure there is a rubber washer in place in the shower head and screw onto the riser arm.



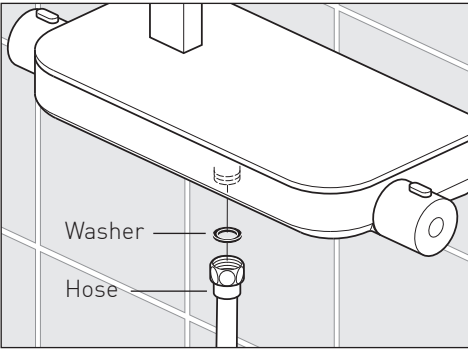
## Handset

Place one of the rubber washer into the cone end of the hose and screw to the handset.

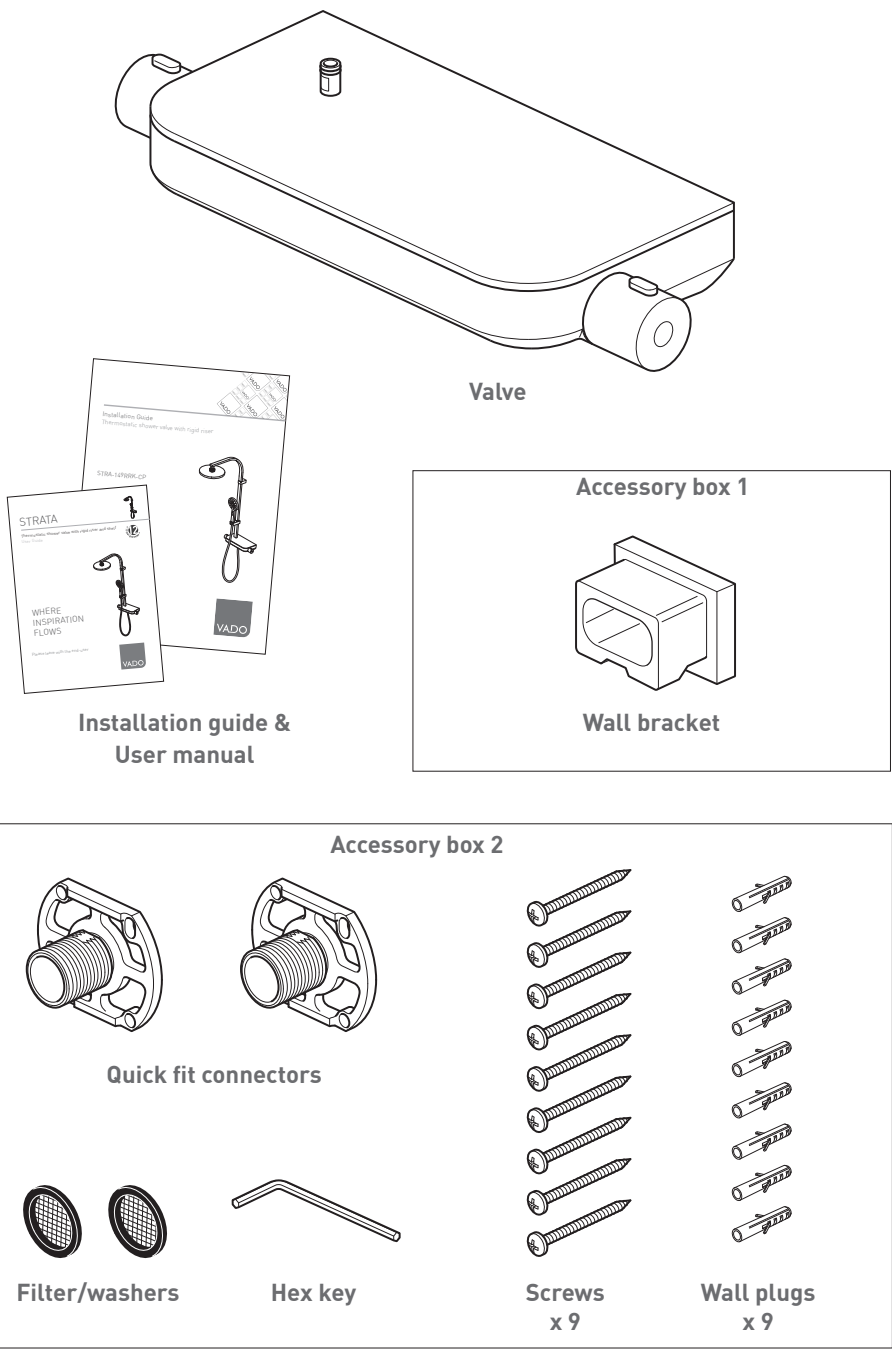


## Valve

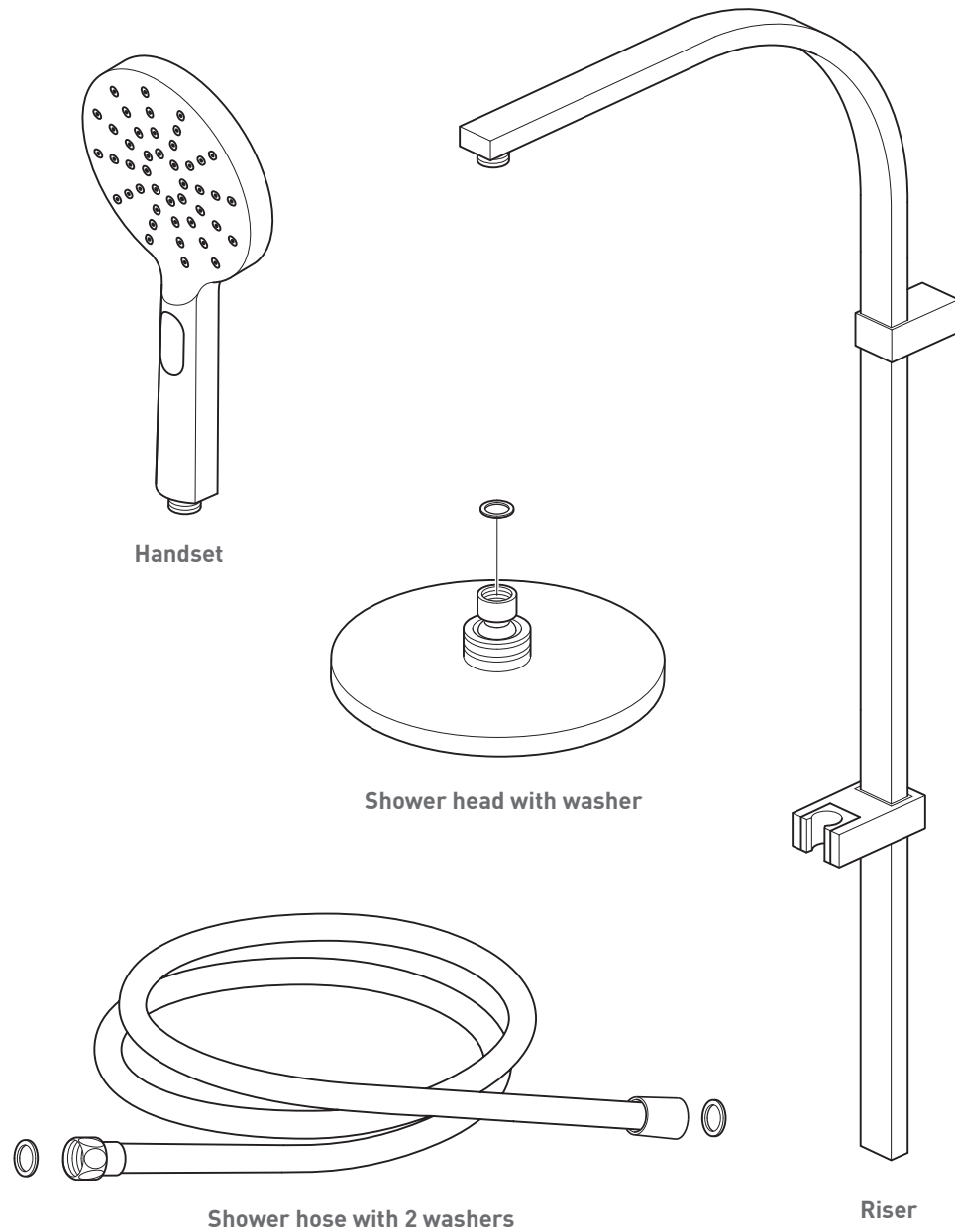
Place the second rubber washer into the nut end of the hose and attach it to the valve outlet.



# Contents of Packaging



## Contents of Packaging



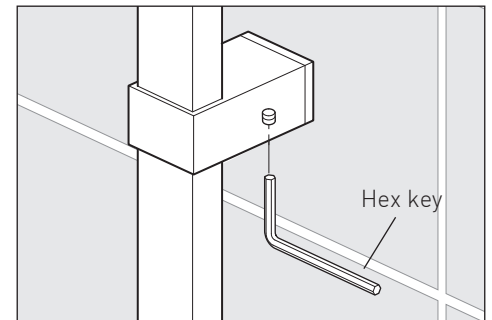
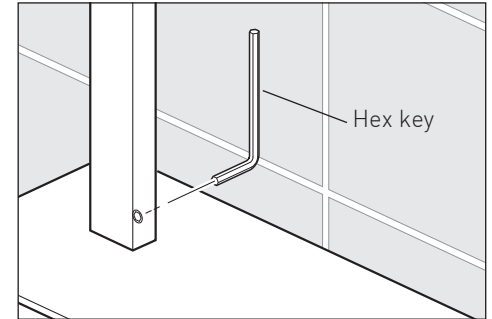
## Installation

Replace the riser onto the valve.

Slide the riser bracket into the wall bracket.

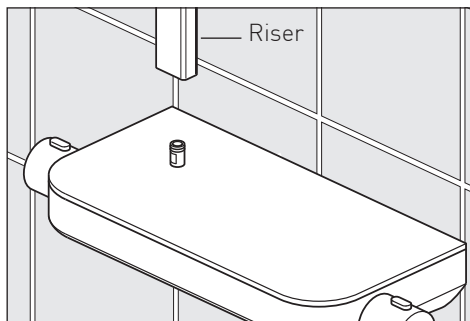
Secure riser in position using the grub screw on the underside of the bracket.

Finally tighten the grub screw to secure the riser to the valve.

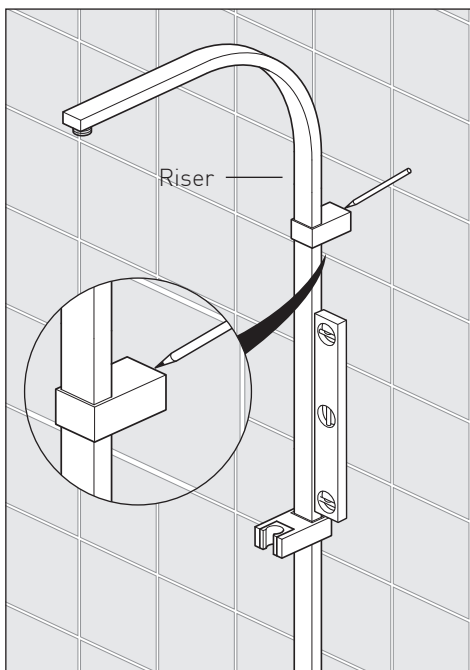



## Installation - riser rail

Push the riser onto the connection on the top of the valve being careful not to damage the O-rings.

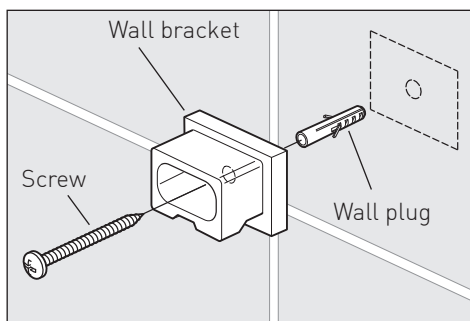


Make sure that the riser is vertical and mark around the wall bracket with a pencil.

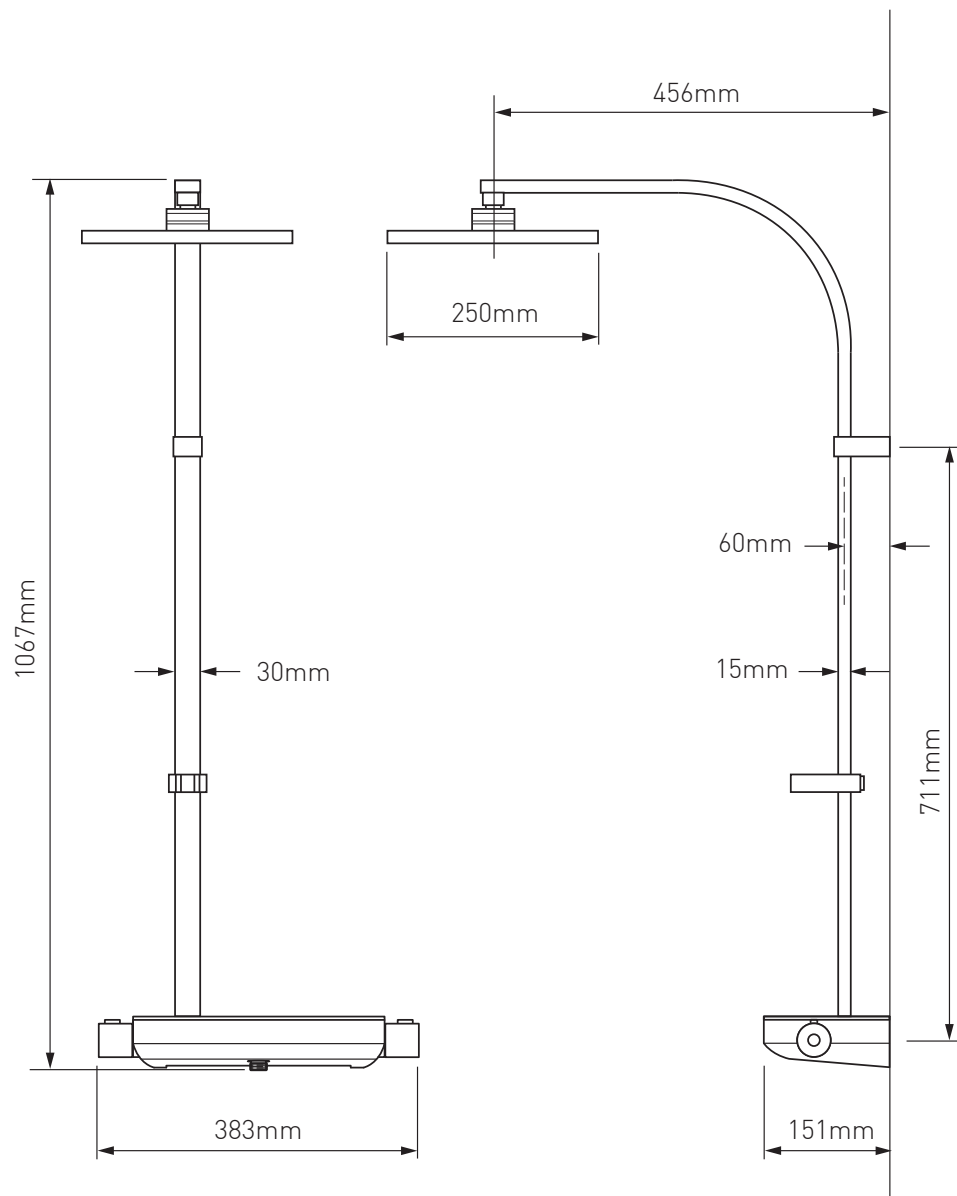


 **Warning!** Please check for any hidden cables and pipes before drilling holes in the wall.

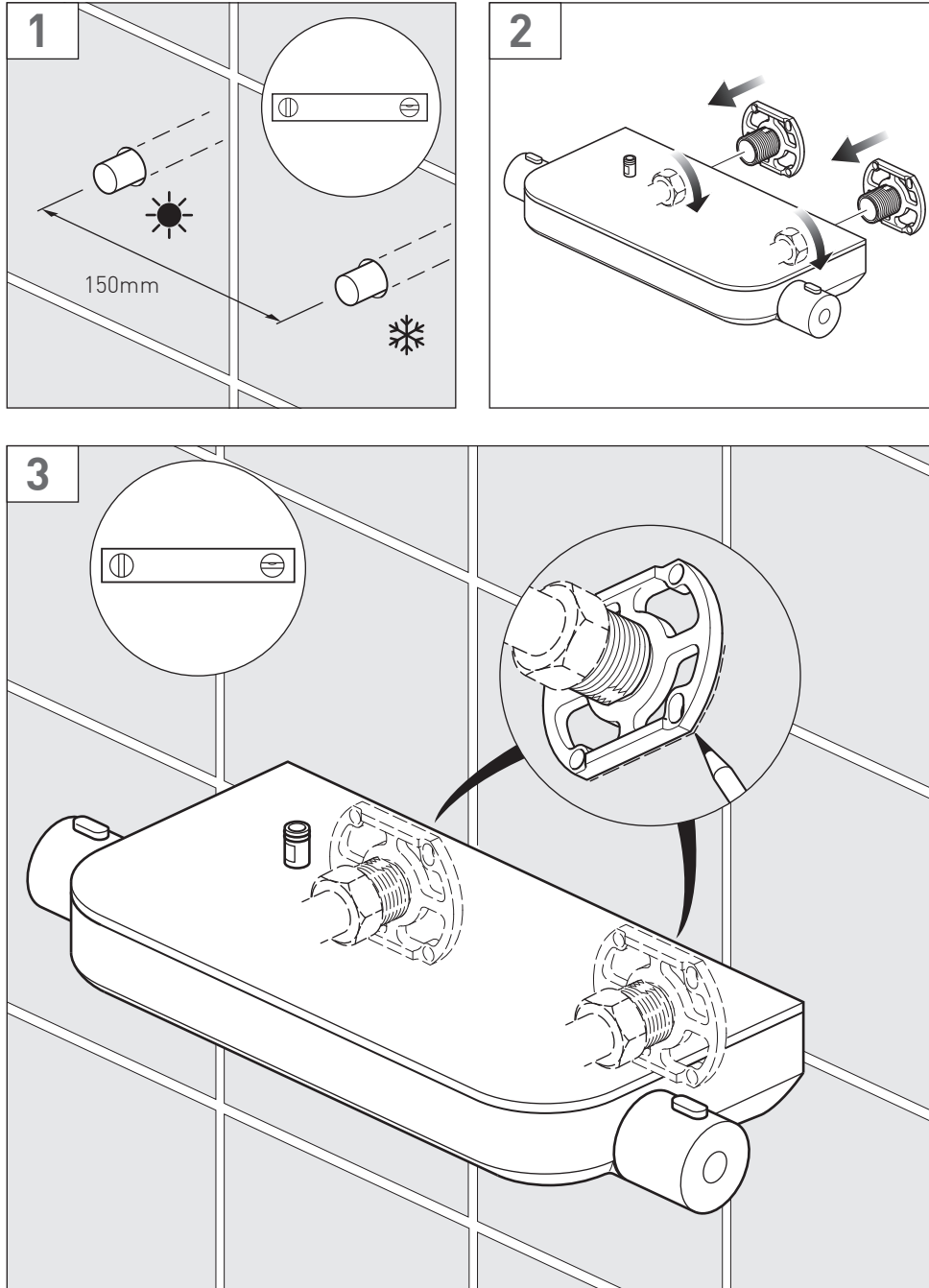
Place the bracket within the marked position and mark the centre of the hole. Drill the marked hole to a suitable depth for the wall plug and secure with supplied screw.



## Dimensions



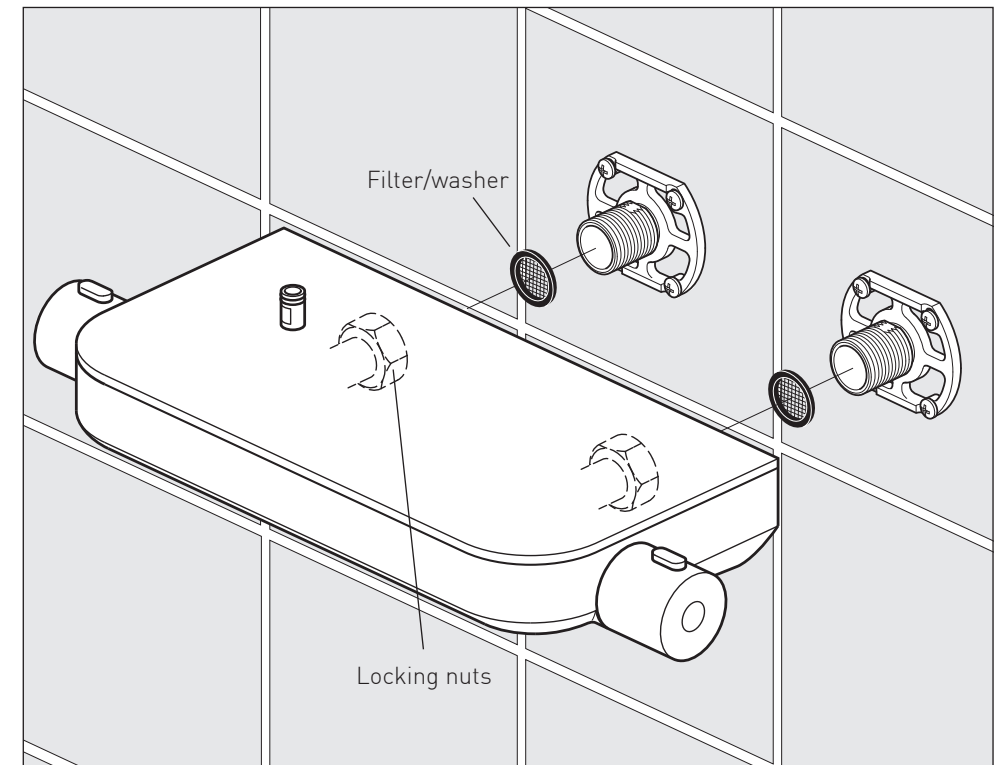
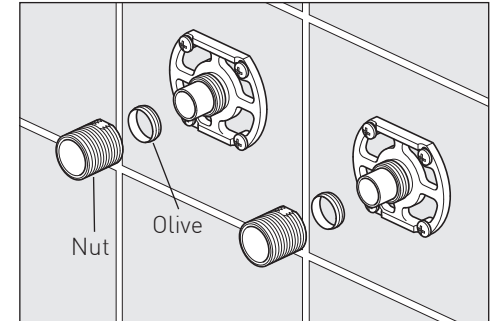
## Installation - Quick guide



## Installation

Slide on the olive, screw on and tighten the nut.

Before installation flush through the pipe work to ensure removal of debris, turn off the water supply.



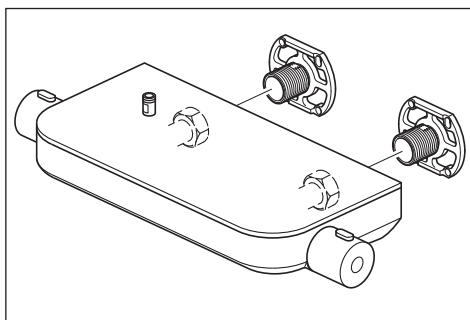
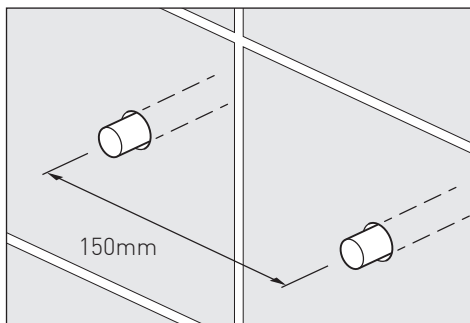
Place a rubber filter/washer in each of the locking nuts on the valve and screw onto the connectors.

# Installation

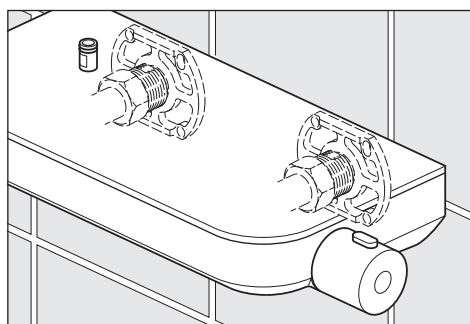
**Note:** Make sure that the valve is positioned to allow room for the riser rail to be fitted later (see dimensions on page 6).

Prepare the wall with 2 copper pipes at 150mm centres, making sure both pipes are level. Connect the water supply to the inlet pipes. The hot water should be connected to the left hand pipe.

Temporarily screw both quick fit connectors onto the valve.



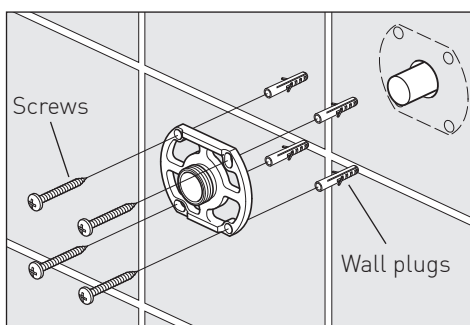
Position the valve making sure it is level. From below mark the position of each connector. Remove the valve, and the connectors. Place the connector back onto the wall and mark the 4 screw holes in each connector.



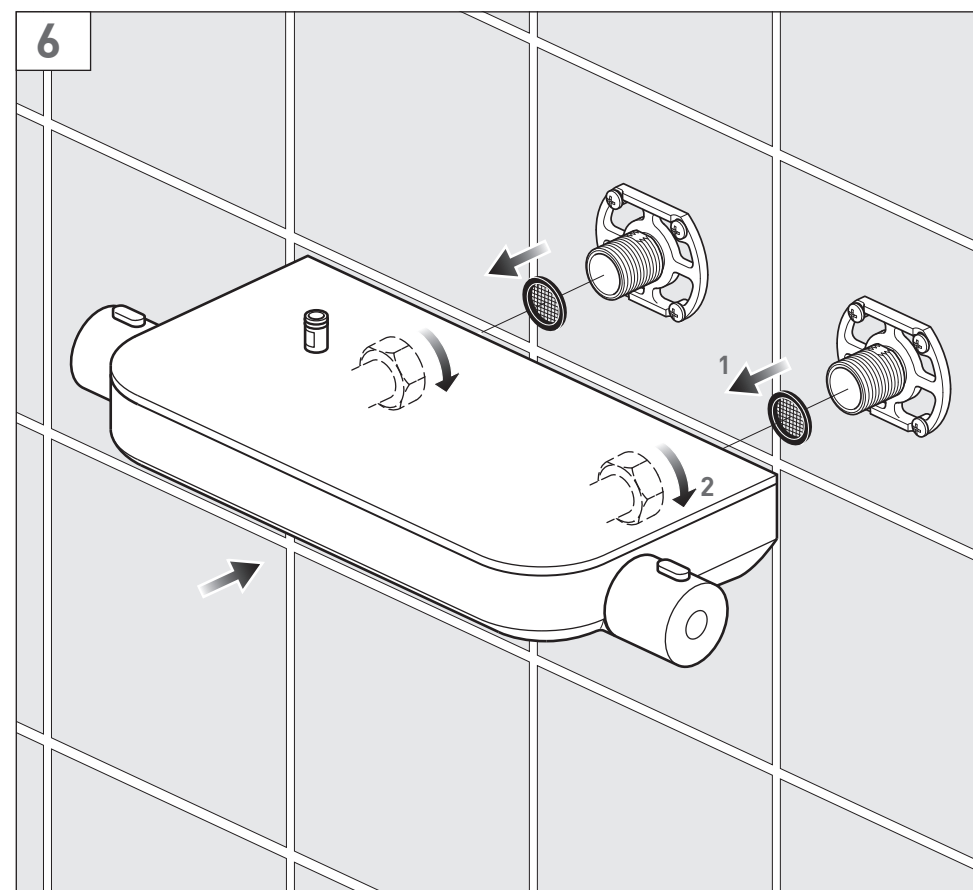
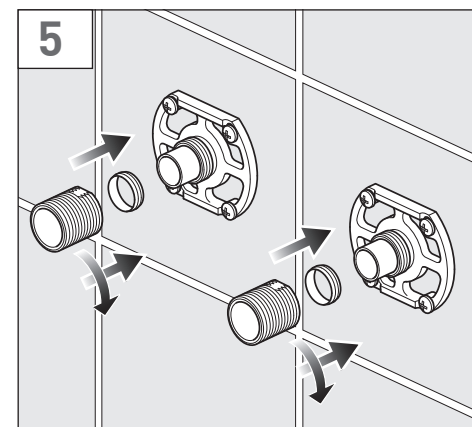
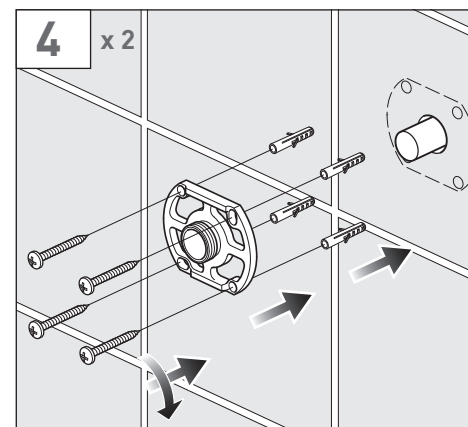
**⚠ Warning!** Please check for any hidden cables and pipes before drilling holes in the wall.

Remove the nut and olive from the connector.

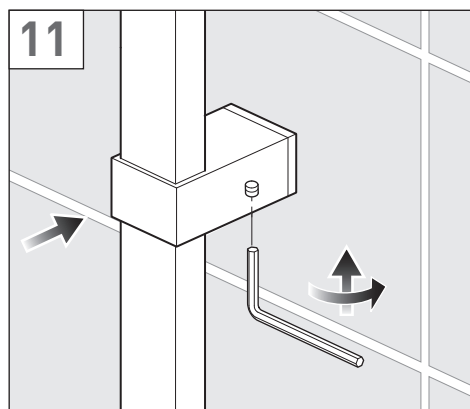
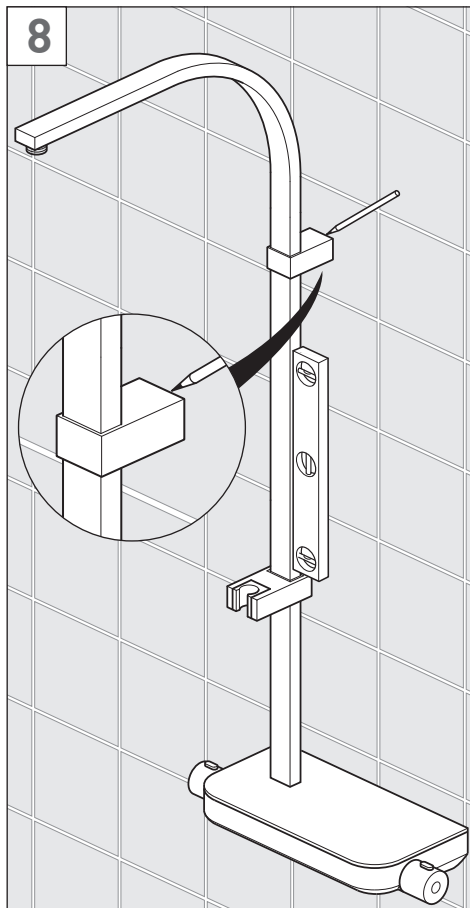
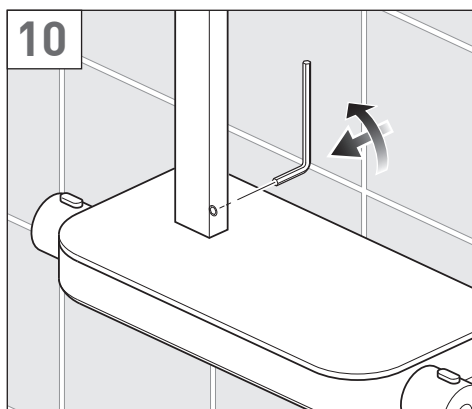
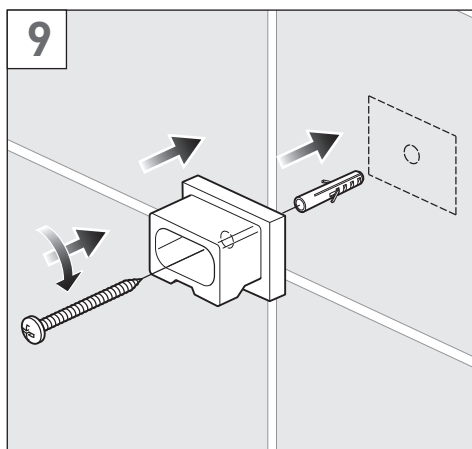
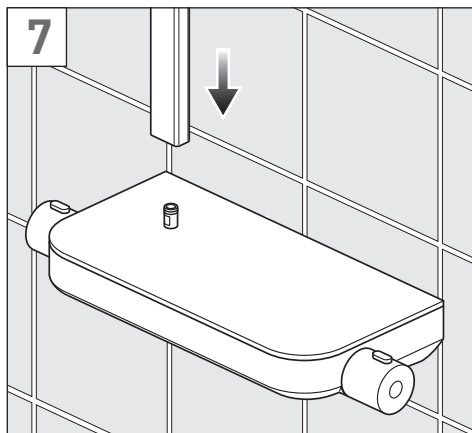
Drill the 4 marked holes to a suitable depth for the wall plugs and secure with supplied screws. Repeat for the other connector.



## Installation - Quick guide



## Installation - Quick guide



## Installation - Quick guide

