

HERITAGE[®]

BATHROOMS

Push Button Bath Waste Fitting Instructions

Models covered:

THC22

Please keep this booklet for future reference.

Installer: when you have read these instructions please ensure you leave them with the user.

Contents

When you buy a Heritage product, you can be confident that it not only features a beautiful, distinctive, classic design, but that it has also been made to the very highest quality standards. To ensure that it works to its full potential, it needs to be fitted correctly.

These fitting instructions have been created to give you all of the information you need and, if you need any further help, please do not hesitate to give us a call on **0844 701 8503**.

Introduction	01
Safety Note	02
Installation	03
Maintenance	04
Notes	04
Heritage Guarantee	05 - 06





Safety Note

- Please read these instructions & retain for future use. All products manufactured & supplied by Heritage are safe, provided they are installed correctly, used correctly, and receive regular maintenance in accordance with these instructions.
- **If you are in any doubt about your ability to install this product safely you must employ the services of an experienced, qualified plumber.**



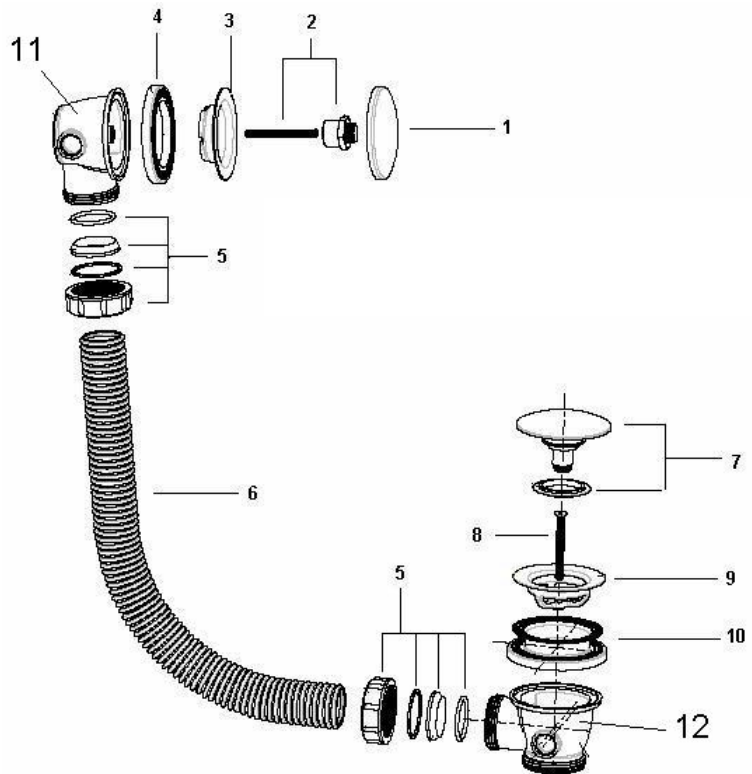
Before starting any installation project please consider the following:

- Prior to drilling into walls, check there are no hidden electrical wires or cables or water supply pipes with the aid of an electrical detector.
- If you use power tools do not forget:
 - Wear eye protection.
 - Unplug equipment after use.
- This product must not be modified in any way as this will invalidate the guarantee.
- These fittings need to be installed in accordance with and meet the requirements of the Water Supply (Water Fittings) Regulations 1999 and Scottish Byelaws 2004.



Installation

- | | | |
|-----|-------------------|------|
| 1. | Overflow Face | (x1) |
| 2. | Overflow Screw | (x1) |
| 3. | Overflow Body | (x1) |
| 4. | Overflow Washer | (x1) |
| 5. | Nut & Washers | (x2) |
| 6. | Hose | (x1) |
| 7. | Clicker Mechanism | (x1) |
| 8. | Screw | (x1) |
| 9. | Flange | (x1) |
| 10. | Sealing Washer | (x2) |
| 11. | Overflow Elbow | (x1) |
| 12. | Waste Body | (x1) |



1. Identify all components are present prior to installation.
2. Fit the waste body (12) and one of the sealing washers (10) under the bath. It is recommended to use a pure silicon sealant where necessary to apply to all sealing faces of the washers.
3. Place the second sealing washer (10) underneath the Flange; and secure the Flange (9) with a screw (8) to seal inside the bath.
4. Screw the Clicker Mechanism (7) into the Flange (9). **Do not overtighten.**
5. Fit the Overflow Elbow (11) to the bath using the Overflow Washer (4) and sealant where necessary. Secure in place using the Overflow Body (3) and tightening with the Overflow Screw (2). Screw the Overflow Face (1) onto the Overflow Screw (2).
6. Connect the hose (6) to both the Overflow Elbow (11) and Waste Body (12) by attaching the hose using the Nut & Washers (5) as shown in the diagram and screwing them into place.
7. Check all joints and connections for leaks.
8. In order to fill the bath, the button in the middle of the waste needs to be pressed down. To release water, press button again.
9. See over the page for aftercare instructions.





Maintenance

General Cleaning

Your fitting has a high quality finish and should be treated with care to preserve the visible surfaces. All finishes will wear if not cleaned correctly. The only safe way to clean your product is to wipe with a soft damp cloth. Stains can be removed using washing up liquid. All bathroom cleaning products (powders and liquids) will damage the surface of your fitting, even the non-scratch cleaners.

Note: Never use abrasive detergents or disinfectants or those containing alcohol, hydrochloric acid or phosphoric acid.

Notes:

Please use this space to add any notes which you or your installer may have regarding the installation or servicing of this product:





Heritage Bathrooms Guarantee

When you buy a Heritage product, you can be confident that it not only features distinctive design, but that it has also been made to meet our rigorous quality standards.

We offer robust guarantees and an attentive aftercare service to ensure that if you do experience any issues, we can deal with a problem quickly, and effectively.

Please note that guarantees are only valid with proof of purchase.

Our guarantees are as follows:



2 Years on
Mirrors &
WC Seats



5 Years on
Bath Screens,
Furniture,
Shower Valves,
Taps, Wastes
& Accessories



Lifetime Guarantee
on Acrylic &
Cast Iron Baths
And Sanitaryware

Register now for additional peace of mind

Register your product with us now and, if you do have any queries after installation, we'll be able to quickly identify the product and give you the best advice. It also means that you won't have to keep your proof of purchase to validate your guarantee. To register, simply go online at www.heritagebathrooms.com/register

Guarantee Terms and Conditions

This guarantee is in addition to your statutory and other legal rights and is subject to the following conditions:

- The product was purchased within the United Kingdom or Republic of Ireland
- The product is used in domestic applications only
- The guarantee applies solely to the original purchaser with proof of purchase
- The installation must allow ready access to all products for the purpose of inspection, maintenance or replacement
- Repair under this guarantee does not extend the original expiry date. The guarantee on any replacement parts or product ends at the original expiry date

Any part found to be defective during the guarantee period will be replaced without charge, providing that the product has been installed in accordance with the instructions given in this guide and used as the manufacturer intended. If the product is no longer available, Heritage will endeavour to provide the nearest equivalent.



Heritage Bathrooms Guarantee Cont.

The guarantee does not cover:

- Damage or defects caused by
 - General wear and tear (including special non-chrome finishes; components such as filters, seals, 'O' rings and washers)
 - Incorrect installation
 - Repair using non-Heritage parts
 - Accidental or wilful misuse
 - Corrosion and the use of inappropriate cleaning products.
 - System debris including the build-up of limescale (which can be controlled through regular servicing and maintenance)
- Compensation for loss of use of the product or consequential loss of any kind.

In the interests of continuous product improvement, Heritage reserves the right to alter product specifications without notice.

Need help?

In the unlikely event that you encounter a problem with your Heritage product, you must, in the first instance, contact the retailer you purchased it from. They will advise as to whether it is due to a manufacturing fault or an installation fault. If the problem is due to a manufacturing fault, they will contact us to arrange a supply of a replacement product as soon as possible. To speak to a Heritage customer service advisor, please contact our technical helpline on **0844 701 8503**.





Heritage Bathrooms
Birch Coppice Business Park
Dordon
Tamworth
B78 1SG

Website: www.heritagebathrooms.com

Telephone: 0844 701 8503

Email: technical@heritagebathrooms.com

HFI (THC22) REV. D4

