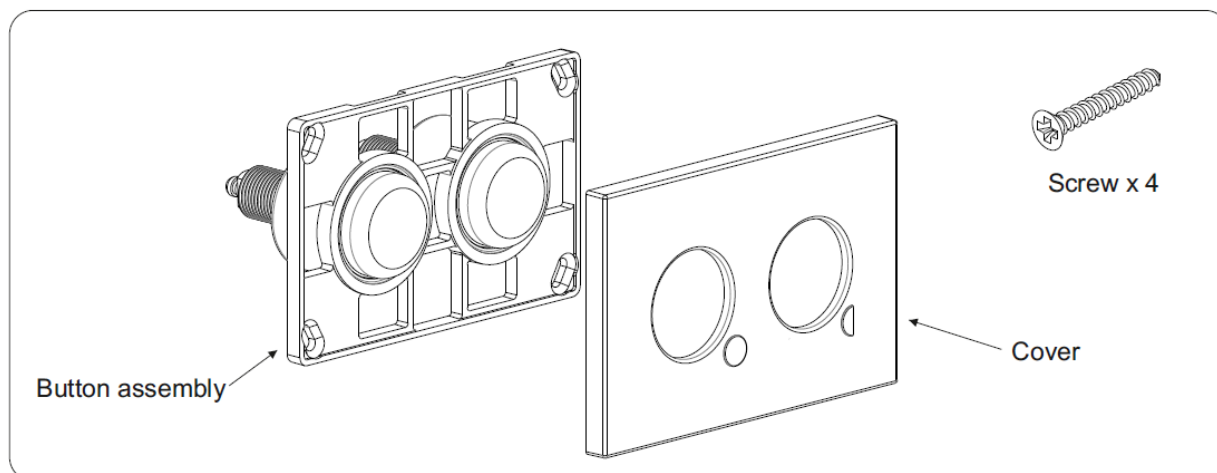


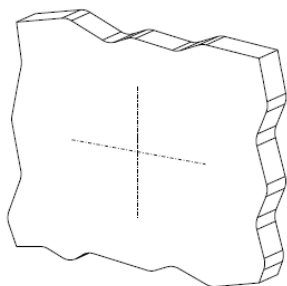
Twyford Bathrooms

DUAL FLUSH PUSH PLATE

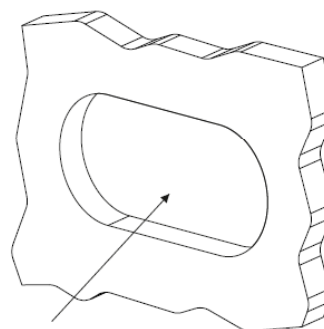


1 - Fitting -

1.1 Mark position of button ensuring there is no interference with cistern, support frame etc.



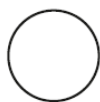
1.2 Cut hole through wall.



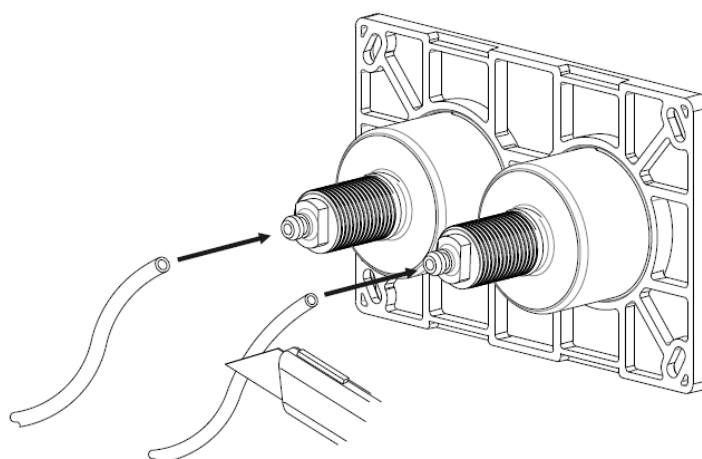
95mm x 42mm hole

1.3 Cut pneumatic tubes to the minimum working length and attach to the button assembly. Ensure tubes are not kinked or stretched.

Clear tube =
full flush.



Green tube =
partial flush.

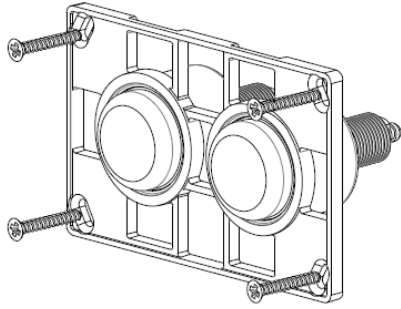


11800 Iss A

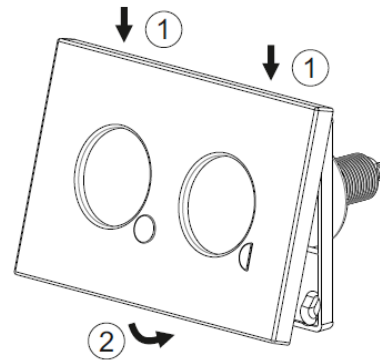
Drawing Number FI24644

Part Number CF9032CP

1.4 Fit button assembly onto surface and fix in position with 4 screws.

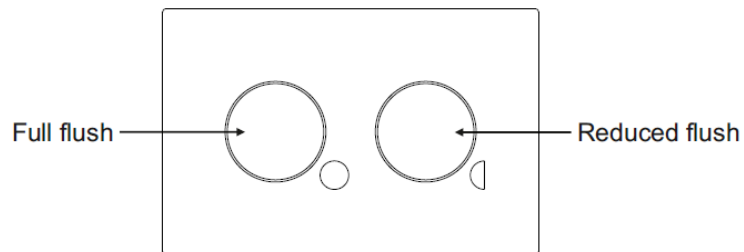


1.5 Attach cover plate to button assembly.



2 - Operation -

2.1 Allow time for cistern to fill before flushing.



Note - the buttons may return slowly after operation, this is quite normal.

3 - Removal -

3.1 If cover needs to be removed insert flat head screwdriver into slot on underside of cover and turn gently.

