

Wall Mounted Accessories

FITTING INSTRUCTIONS

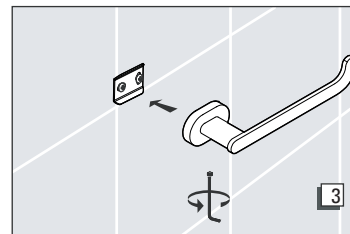
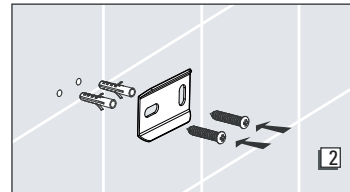
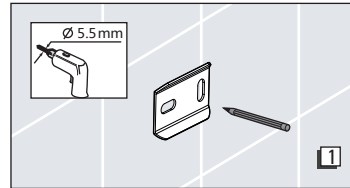
These instructions cover installation for the Arena accessory range.

Note: The wall plugs supplied are only suitable for solid stone / brick walls. For plasterboard walls use specialist wall plugs.
 Tip – a piece of masking tape applied to the wall before marking the fixing holes will stop the drill wandering. Take care when using power tools - beware of hidden cables or pipes when drilling. The use of a residual current device (RCD) is recommended.

1. Offer up the product to the wall in the desired position to ensure there is enough space for installation. (If installing a towel rail, measure the distance between the two centres of the wall brackets).
2. Unscrew the wall brackets using the allen key supplied. Using a pencil, mark drill holes in the desired position on the wall using the wall bracket as a guide.
3. Using an appropriate sized drill bit (5.5mm), drill holes in the positions marked, deep enough to fit the wall plugs supplied.
4. Using the wall plugs and screws provided, secure the wall bracket to the wall.
5. Slide the product onto the wall bracket and tighten using the allen key. The product is now ready for use.

AFTERCARE

We recommend that the product is cleaned with a soft, damp cloth to prevent scratches on surfaces. DO NOT use metal cleaners or other abrasive cleaning products as this may also damage the surface of the product.



Towel Rail Installation

