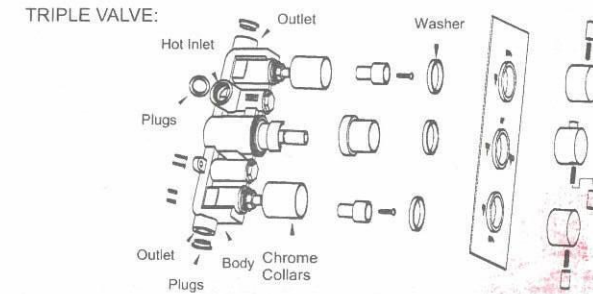
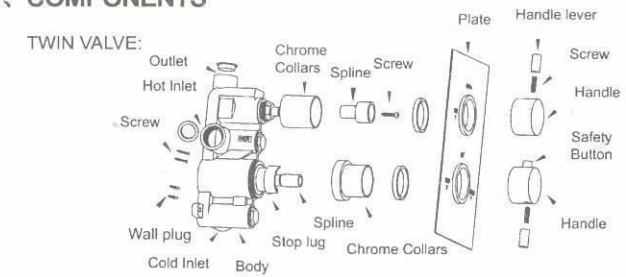


I、 TECHNICAL DATA

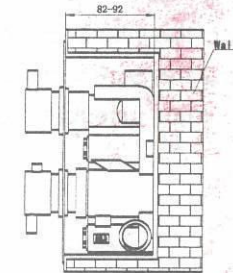
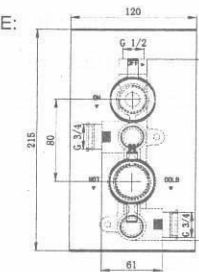
1. Ideal Pressure: 0.2Mpa-0.5Mpa. A reducing valve is required when the water pressure is more than 0.5Mpa.
2. Standard Pressure: Dynamic water pressure 0.3 ± 0.02 Mpa.
3. Cold Supply Temperature: 4-29°C;
Hot Supply Temperature: 55-58°C;
4. Thermostatic Temperature Range: 20-50°C.
5. Pre-set Temperature: 38°C.
6. Safety Mechanism: The mixed water will be immediately cut off when the cold supply is not effective.
7. Precise Temperature: It takes approximately 5 seconds to achieve the desired temperature. The actual working temperature will be within $\pm 2^\circ\text{C}$ of the temperature.
8. Temperature Stability: The outlet temperature variation will be within $\pm 2^\circ\text{C}$ when the inlet temperature is stable and the hot and cold pressure varies by 50%. The outlet temperature variation will be within $\pm 2^\circ\text{C}$ when the inlet pressure is stable and the hot supply temperature increases from 60°C to 75°C (5°C/min).

II、 COMPONENTS

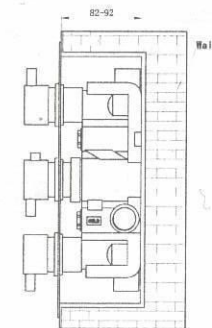
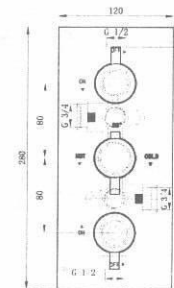


III、 DIMENSION DRAWING

TWIN VALVE:

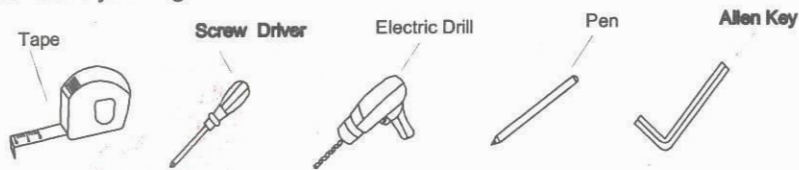


TRIPLE VALVE:



IV. PREPARATION FOR INSTALLATION

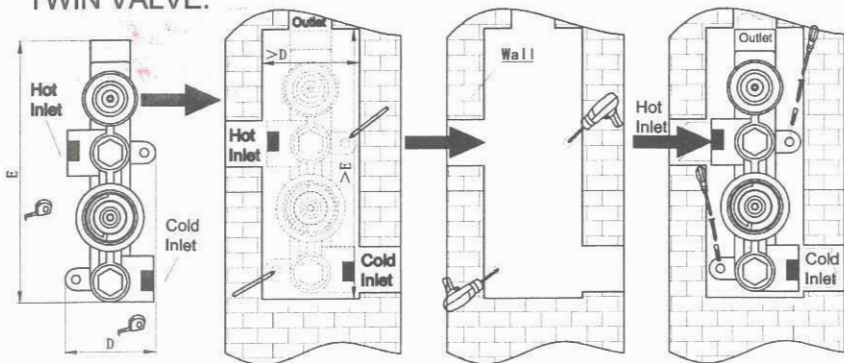
1. Carefully remove the product from the packaging to prevent scratches, wearing cotton gloves if possible.
2. Identify all components.
3. Prior to installation, flush out the pipework thoroughly to remove debris.
4. Turn off the water supply.
5. Tools you might need:



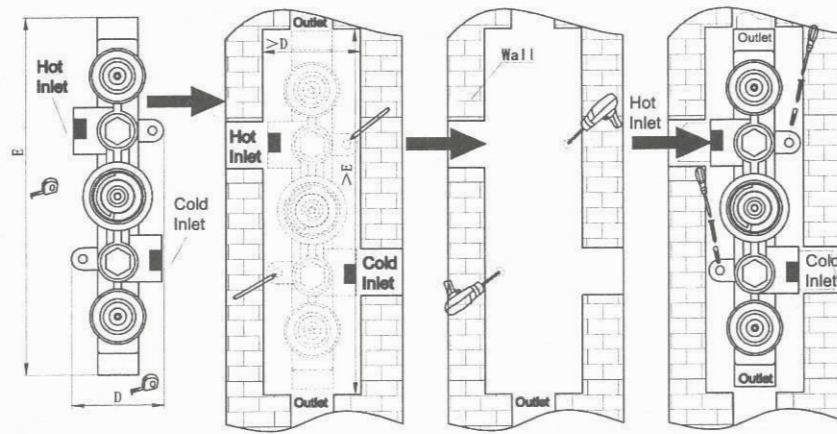
V. INSTALLATION

1. Determine the fixing position for the valve. Make a recess in the wall according to the dimensions of the shower valve and mark the required installation holes and sizes. Drill the holes with plastic plugs. Connect the inlet and outlet to the correct pipework with the necessary sealant. Screw the shower valve body into position, using the mounting lugs that are cast into the base of the body.

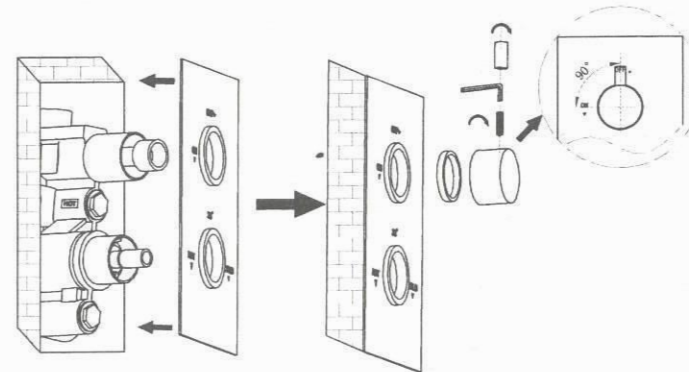
TWIN VALVE:



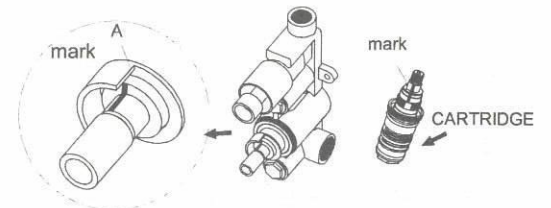
TRIPLE VALVE:



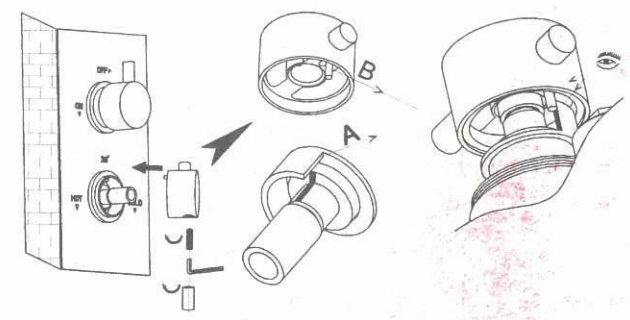
2. Secure the concealing plate onto the valve body which is clearly marked. Then fit the rubber washer, handle body, grub screw and hand lever.



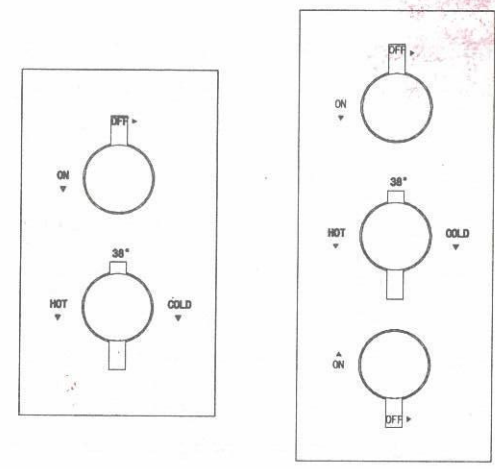
3. The factory outlet temperature setting is 38°C when face 'A' is aligned with the mark on the cartridge. Do not turn the spindle in case movement occurs which will result in an incorrect factory outlet temperature setting. If this is the case, please re-align as shown below.



4. Fit the stop lug and handle body with part A and B (fix stopper) aligned.



5. Your shower valve is now ready for use.



VI. CLEANING

This product is made using high quality chrome plating which should be maintained using a clean, damp cloth. No abrasive agents or materials can be used. Use of these agents will invalidate your guarantee.