

# WASHLET™ CARE INSTRUCTION

---

## Please note:

1. WASHLET™ is an electronic device. Be sure to remove all traces of water and cleanser, and prevent water or cleansing steam from getting inside the device (this could damage the plastic parts or cause malfunctions).
  2. Avoid applying excessive pressure or pulling force on the covers or wand jet (this could result in damage or malfunctions).
  3. Be sure that the power switch is turned to "OFF" prior to cleaning (please see the instruction manual for details on how to switch off WASHLET™).
  4. Only use a soft cloth moistened with water to clean WASHLET™ (NO toilet paper, dry cloths, microfibre, sponges or brushes as these can scratch the surface or generate static electricity, which could potentially cause malfunctions).
  5. If WASHLET™ is very dirty or soiled, you can also use a cloth moistened with a diluted neutral cleanser to clean it. Follow up by wiping with a damp cloth to ensure that no cleanser residue remains on the surface.
- 

## Clean WASHLET™ attachment (recommended daily)

Clean WASHLET™ regularly or immediately once you notice any stains or soil. It is easier to clean WASHLET™ if you keep stains and waste from accumulating.



1. Wipe the surface of the WASHLET™ seat with a soft, damp cloth, and also use a neutral cleanser if necessary.



2. Wipe the inside and outside of the WASHLET™ lid as well.



3. Be sure to also clean the sides, back and areas where WASHLET™ touches the ceramic toilet bowl (if possible).

## Clean WASHLET™ wand jet (recommended approx. once a month)



1. Use the cleaning programme to extend the WASHLET™ wand jet.  
(The steps for extending the WASHLET™ wand jet may vary depending on the model. Please see the instruction manual for details on how to extend the WASHLET™ wand jet).
2. Clean the wand jet with a soft, damp cloth. If it is very dirty, you can also use a neutral cleanser for cleaning.  
(Avoid applying excessive pressure or pulling force on the wand jet as this could cause damage or malfunctions.)
3. Retract the WASHLET™ wand jet again.

## Clean deodorizing filter (recommended approx. once a month)

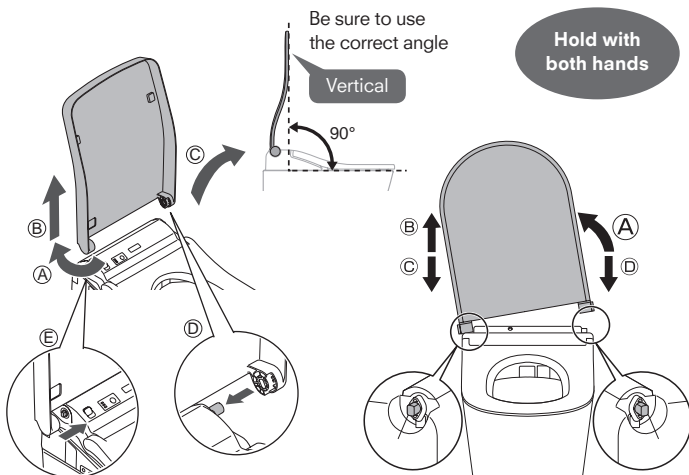
The deodorizing filter is located on the side of WASHLET™ towards the back  
(please see the instruction manual for details on how to remove the filter).



1. Remove the deodorizing filter (coarse filter) and gently brush it, e.g. with a toothbrush.
2. If the filter is very dirty, you can also rinse it with water.  
Please be sure that the filter is completely dry before replacing it.

**IMPORTANT:**  
The process of removing the WASHLET™ lid differs depending on the model. Please see the instruction manual for details.

## Clean the areas where the WASHLET™ attachment comes into contact with the lid (recommended approx. once a month)



1. Remove the WASHLET™ lid  
(please see the instruction manual for details on how to remove the WASHLET™ lid).
2. Clean the areas where the WASHLET™ lid comes into contact with the attachment with a soft, damp cloth.  
Use a neutral cleanser or a cotton swab as needed.
3. Replace the WASHLET™ lid correctly.

---

## Clean the space between WASHLET™ and the toilet bowl by lifting it\* (recommended approx. once a month)

You can remove the WASHLET™ attachment to clean the top of the toilet bowl and the bottom of the WASHLET™ attachment.



1. Press the button to remove the WASHLET™ attachment and lift it slightly.  
(Please see the instruction manual for details on how to lift the WASHLET™ attachment).



2. Clean the space with a soft, damp cloth and a neutral cleanser. Then wipe it off with a soft, damp cloth to ensure that no cleanser residues are left behind.

3. Replace the WASHLET™ attachment correctly.  
Please be sure that the power cord and water hose

\*applies only to WASHLET™ RW, SW, RG and RG Lite