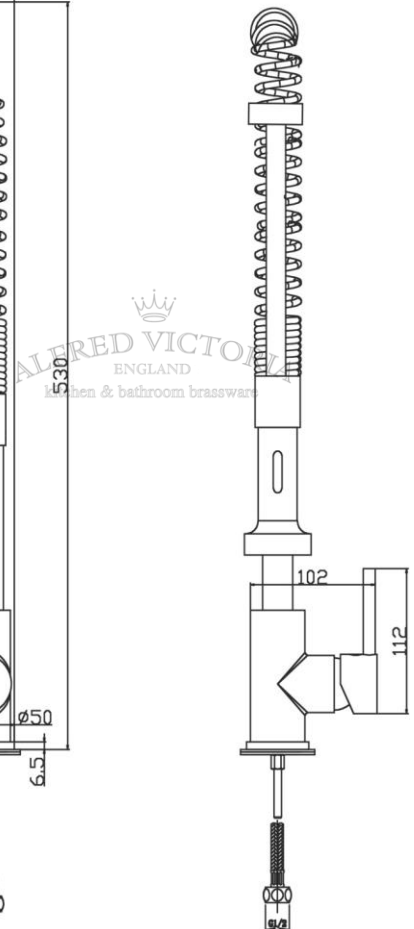
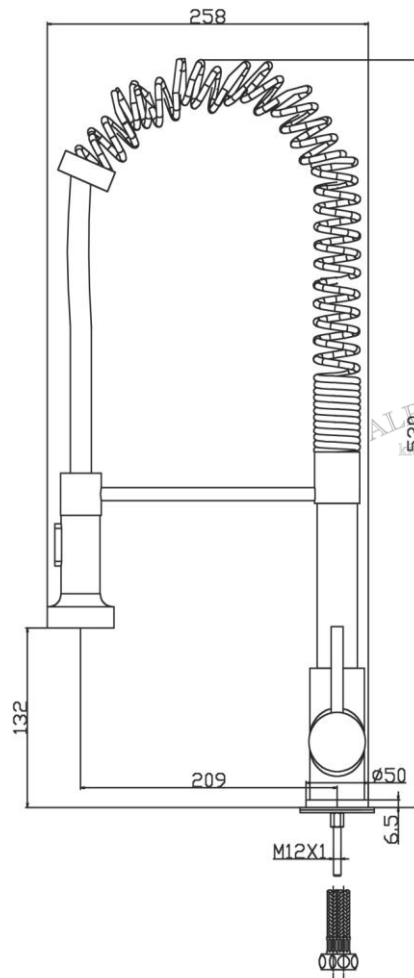


TECHNICAL DATA SHEET

F76 Pull out kitchen sink mixer

Barcode	7081247146136
Product Code	F76
Construction	Brass Body & Base plate; Zinc-alloy & Handle
Finishes	Chrome plated to BS EN 248
Product Type	Contemporary
Water Pressure	Min. 1.5 bar, Max. 6.0 bar
Plumbing Systems	Suitable for all plumbing systems, Hot and Cold water pressure preferably balanced Max. supply pressure differential requirement no greater than 5:1
Standards	Complies with BS5412, BS EN200
Certification	-
Cartridge	WANHAI 35mm Ceramic disc cartridge
Fitting	G1/2" BSP Female Flexible inlet connection hoses
Aerator	Spout aerator
Packaging	68 x 31.5 x 63cm / carton (8 boxes), Dimension: 66.5 x 29.5 x 7.5cm / box; Weight: 3.13Kg / box
Guarantee	10 years against manufacturing faults (excluding serviceable parts)
Additional Information	<ol style="list-style-type: none"> 1. Pull-out spray function with 153cm Pull-out hose 2. Select 2 modes, Chrome , Plastic Spray head 3. Rubber and brass braided kink-resistant hose 4. 360° Swivel Spout

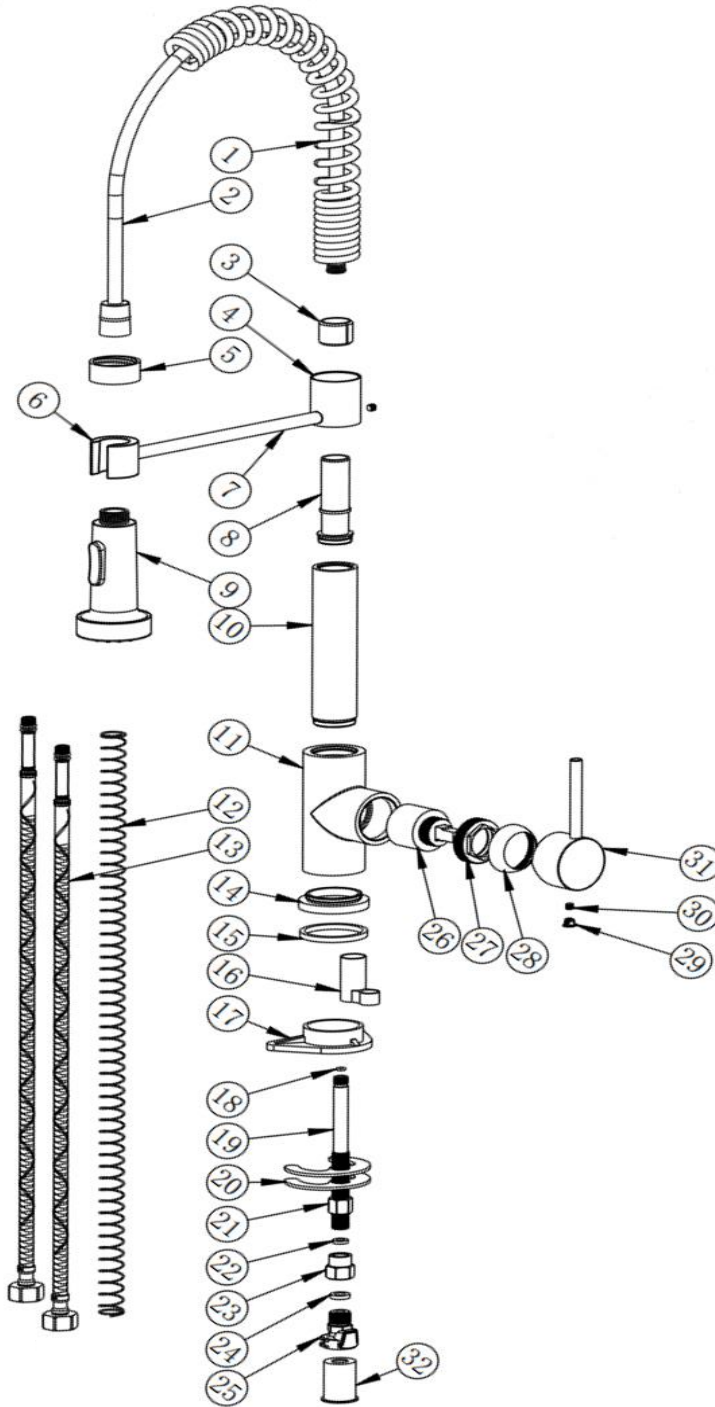


Flow Rates (Litres per minute)


System Pressure	0.1 Bar	0.2 Bar	0.3 Bar	0.5 Bar	1.0 Bar	1.5 Bar	2.0 Bar	3.0 Bar	4.0 Bar	5.0 Bar
F76 (Spray Head)	-	-	-	2.6	3.5	-	-	6.0	-	7.6

The information contained on this page was correct at date of issue. Fitting dimensions are provided as a guide only. Some variation may occur due to manufacturing tolerances. We pursue a policy of continuing improvement in design and performance of our products and so reserve the right to change specifications without prior notice.

F76



NO.	ITEM	QTY
1	Ø32.5 S/STEEL SS304 PULL-OUT HOSE CASING	1
2	G1/2*1.53M RUBBER & BRASS PULL-OUT HOSE	1
3	Ø24*Ø19*19 PLASTIC INSERT	1
4	Ø36*39 BRASS SPRAY HEAD HOLDER CONNECTOR	1
5	Ø36*15 BRASS SPRAY HEAD COLLAR	1
6	Ø34*28 BRASS SPRAY HEAD HOLDER	1
7	Ø10*186 BRASS HOLDER CONNECTOR ROD	1
8	Ø26*72 BRASS SPOUT CONNECTOR	1
9	Ø53 PLASTIC SPRAY HEAD 2 MODES	1
10	Ø32*135 BRASS SPOUT CONNECTOR TUBE	1
11	BRASS TAP BODY	1
12	Ø18*Ø1*80CM S/STEEL SPRING	1
13	G1/2" BSP 500mm S/STEEL FLEXITAIL	2
14	Ø50*11.5 BRASS BASE PLATE	1
15	Ø48*Ø41.5*4.3 RUBBER WASHER	1
16	18*37*33 PLASTIC HOSE HOLDER	1
17	85*55*17 PLASTIC TRIANGLE FIXING PLATE	1
18	Ø7*1.5 NBR O-RING	1
19	Ø12*130 BRASS FAST-FIT CONNECTOR FIXING ROD	1
20	Ø61 HORSE-SHOE FIXING KIT	1
21	M12*12.5 BRASS FAST-FIT CONNECTOR FIXING NUT	1
22	Ø11*Ø6.1*2.3 RUBBER WASHER	1
23	18*19 BRASS PULL-OUT HOSE CONNECTOR	1
24	Ø14*Ø8*3 RUBBER WASHER	1
25	FAST-FIT CONNECTOR ASSEMBLY	1
26	35MM CERAMIC DISC CARTRIDGE	1
27	M37 BRASS CARTRIDGE LOCK NUT	1
28	M37 PLASTIC HANDLE COLLAR	1
29	Ø6.8 ABS COVER CAP	1
30	M5*5 S/STEEL HANDLE GRUB SCREW	2
31	Ø44*26 ZINC-ALLOY HANDLE	1
32	Ø26*33 POM SINGLE HOLE CASING	1

Alfred Victoria Exploded Drawings			Material:	Assembly	Size:	A4
		(Date:D/M/Y)	Scale:	None	Issue No:	01
Drawn by:	Konstantine	28/06/2021				
Checked by:	Lee	28/06/2021				
Approved by:	T. K.	28/06/2021				
Drawing Name:						