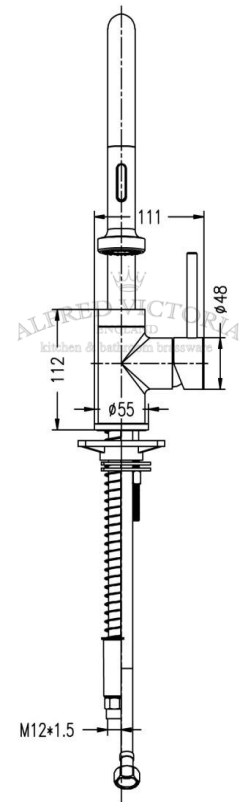
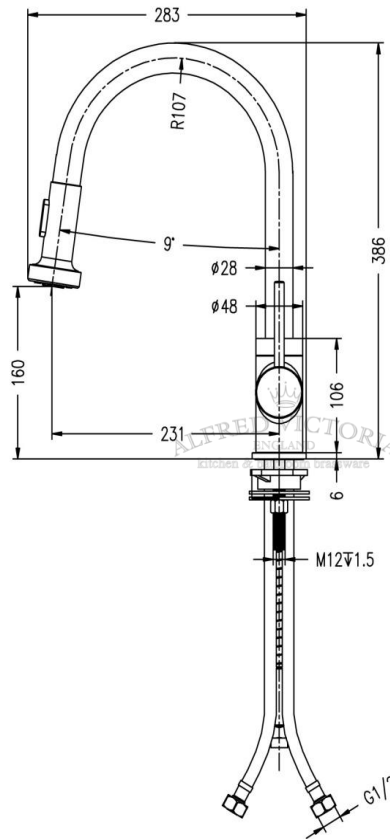


# TECHNICAL DATA SHEET

## F75 Pull out kitchen sink mixer

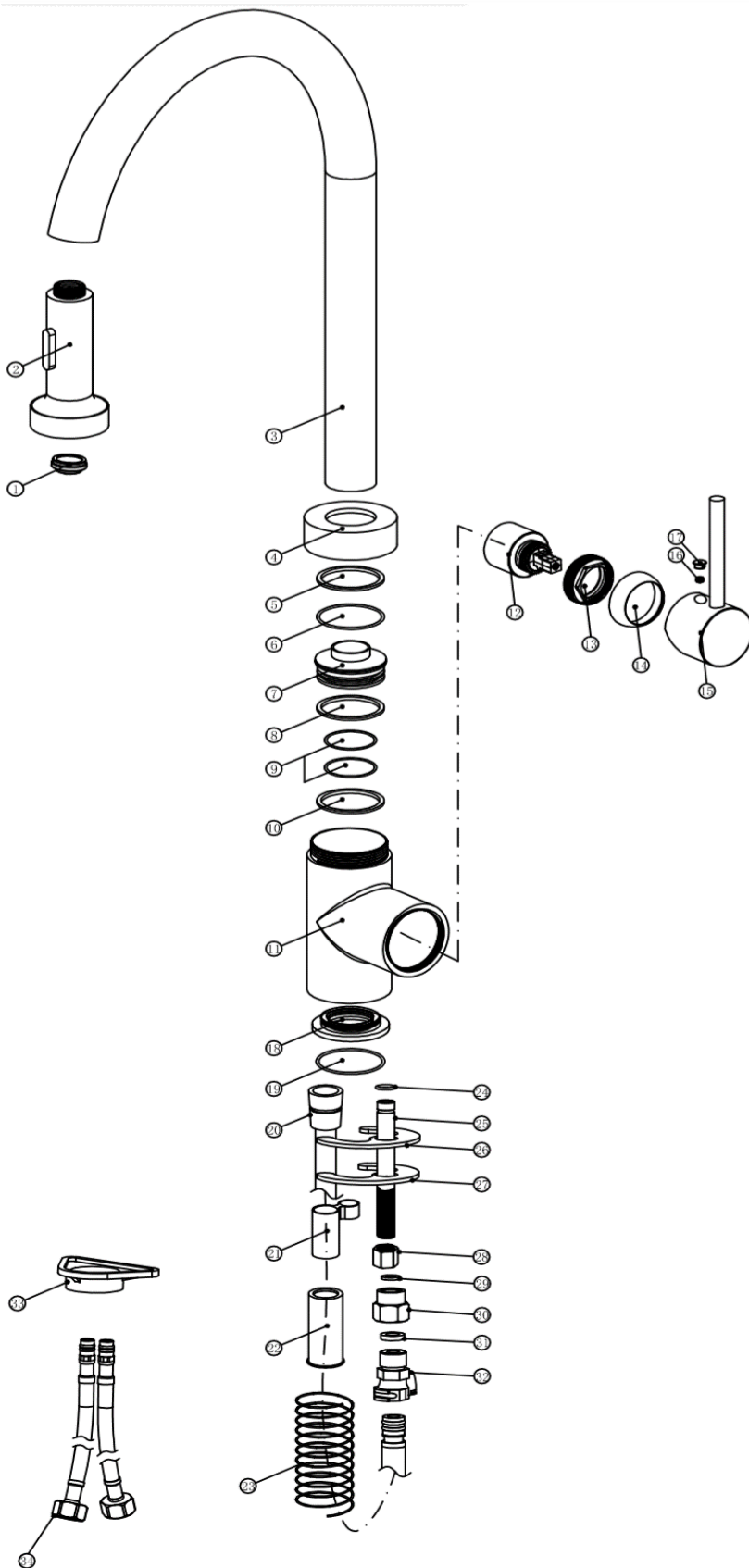
<b>Barcode</b>	7081244986209
<b>Product Code</b>	F75
<b>Construction</b>	Brass Body (CuZn40Pb18); Zinc-alloy handle
<b>Finishes</b>	Chrome plated to BS EN 248
<b>Product Type</b>	Contemporary
<b>Water Pressure</b>	Min. 1.0 bar, Max. 6.0 bar
<b>Plumbing Systems</b>	Suitable for all plumbing systems, Hot and Cold water pressure preferably balanced Max. supply pressure differential requirement no greater than 5:1
<b>Standards</b>	Complies with BS5412, BS EN200
<b>Certification</b>	Manufactured to comply with WRAS
<b>Cartridge</b>	40mm Ceramic disc cartridge
<b>Fitting</b>	G1/2" BSP Female Flexible inlet connection hoses
<b>Aerator</b>	Spout aerator
<b>Packaging</b>	55.5 x 32 x 62cm / carton (8 boxes), Dimension: 54 x 31 x 7.5cm / box; Weight: 2.56Kg / box
<b>Guarantee</b>	10 years against manufacturing faults (excluding serviceable parts)
<b>Additional Information</b>	<ol style="list-style-type: none"> <li>1. Pull out spray function</li> <li>2. Handset : 3 modes, ABS, Chrome</li> <li>3. Nylon braided kink-resistant hose</li> <li>4. 360° Swivel Spout</li> </ol>



### Flow Rates (Litres per minute)

System Pressure	0.1 Bar	0.2 Bar	0.3 Bar	0.5 Bar	1.0 Bar	1.5 Bar	2.0 Bar	3.0 Bar	4.0 Bar	5.0 Bar
<b>F75</b>	0.7	1.7	2.1	2.8	4.0	4.9	5.7	7.0	8.0	8.9

The information contained on this page was correct at date of issue. Fitting dimensions are provided as a guide only. Some variation may occur due to manufacturing tolerances. We pursue a policy of continuing improvement in design and performance of our products and so reserve the right to change specifications without prior notice.



# F75

NO.	ITEM	QTY
1	AERATOR	1
2	SPRAY HEAD	1
3	SPOUT	1
4	SPOUT COLLAR	1
5	PE WASHER	1
6	O-RING	1
7	CONNECTOR	1
8	PE WASHER	1
9	O-RING	2
10	PE WASHER	1
11	TAP BODY	1
12	CARTRIDGE	1
13	CARTRIDGE LOCK NUT	1
14	HANDLE COLLAR	1
15	HANDLE	1
16	GRUB SCREW	1
17	INDICE	1
18	BASE PLATE	1
19	O-RING	1
20	PULL-OUT HOSE	1
21	HOSE CONNECTOR 1	1
22	HOSE CONNECTOR 2	1
23	SPRING	1
24	O-RING	1
25	OUTLET CONNECTOR	1
26	C-SHAPE NBR WASHER	1
27	C-SHAPE STEEL WASHER	1
28	BRASS NUT	1
29	NBR WASHER	1
30	BRASS NUT	1
31	NBR WASHER	1
32	FAST CONNECTOR	1
33	FIXING PLATE	1
34	FLEXI-TAILS	2

Alfred Victoria Exploded Drawings			Material:	Assembly	Size:	A4
(Date:D/M/Y)			Scale:	None	Issue No:	01
Drawn by:	Konstantine	28/06/2021				
Checked by:	Lee	28/06/2021				
Approved by:	T. K.	28/06/2021				
Drawing Name:						