

Twyford Guarantee

At Twyford, we want to make things as easy as possible for our customers. That's why we design products that are easy to fit and use, and that are quality tested to make sure they won't let you down. It's also why we offer solid guarantees on all products, effective from the date of purchase, to give you peace of mind.

These Twyford taps are covered by a **5 year guarantee**.

Guarantee Terms and Conditions

This guarantee is in addition to your statutory and other legal rights and is subject to the following conditions:

- The product was purchased within the United Kingdom or Republic of Ireland.
- The guarantee applies solely to the original purchaser with proof of purchase.
- The installation must allow ready access to all products for the purpose of inspection, maintenance or replacement.
- Repair under this guarantee does not extend the original expiry date. The guarantee on any replacement parts or products ends at the original expiry date.
- Any part found to be defective during the guarantee period will be replaced without charge, providing that the product has been installed in accordance with the instructions given in this guide and used as the manufacturer intended.

The guarantee does not cover damage or defects caused by:-

General wear and tear (including special non-chrome finishes) components such as:-

- Filters, seals, 'O' rings and washers)
- incorrect installation
- repair using non-Twyford parts
- accidental or wilful misuse

General Cleaning

Your fitting has a high quality finish and should be treated with care to preserve the visible surfaces. All finishes will degrade if not cleaned correctly. The only safe way to clean your product is to wipe with a soft damp cloth. Stains can be removed using washing up liquid.

All bathroom cleaning products (powders and liquids) will damage the surface of your fitting, even the non-scratch cleaners.

Note: Never use abrasive detergents or disinfectants or those containing alcohol, hydrochloric acid or phosphoric acid.

We advise that your fitting is regularly serviced in hard water areas to maintain optimum performance.

- corrosion and the use of inappropriate cleaning products.
- system debris including the build up of limescale (which can be controlled through regular servicing and maintenance).

The guarantee does not cover compensation for loss of use of the product or consequential loss of any kind.

In the interests of continuous product improvement, Twyford reserves the right to alter product specifications without notice.

The Twyford Product Guarantee does not affect your statutory rights as a consumer.

Need help?

If this product does not function correctly when first used, contact **The Technical Department on 01926 516800** where our expert team of advisors will be able to offer you help and advice.

Problems during the guarantee period

In the unlikely event that you encounter any problems with the product during the guarantee period, contact **The Technical Department on 01926 516800** with your proof of purchase and we will work to resolve the problem quickly.

Technical support hotline

(Tel: **01926 516800**) with access to fully trained advisors who can offer installation advice, talk you through quick maintenance checks, or recommend the best course of action to fix any problems with a product.

Contact Us

For any queries please contact us or visit our website for further information:

Email: enquiries@geberit.co.uk

Website: www.twyfordbathrooms.com

Telephone: +44 (0) 1926 516800

Twyford

Geberit Group

Doc M Basin Mono Mixer

SF5357CP



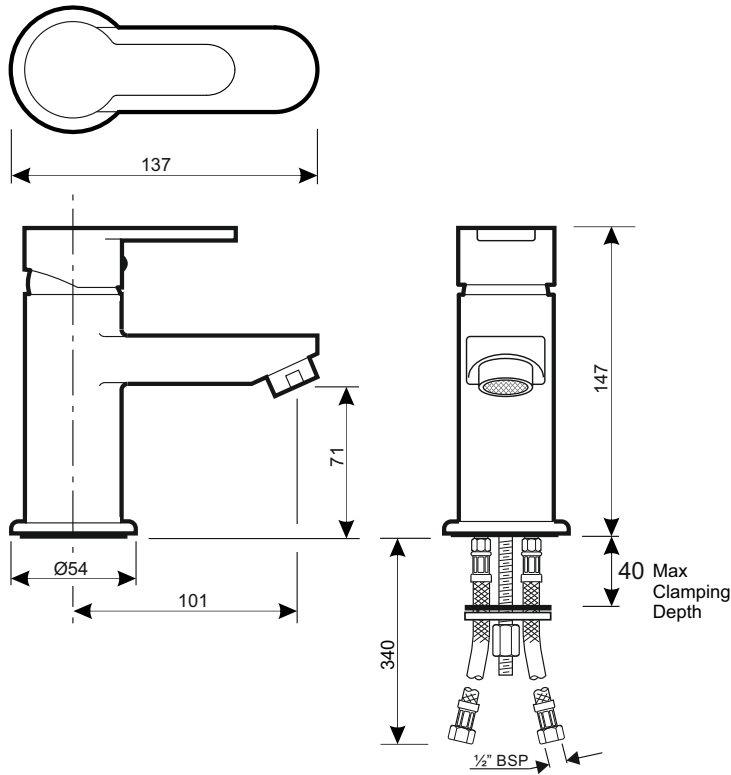
Please Read These Instructions Carefully Prior To Commencing Work

Keep these instructions for future reference

FI 25826 Rev 01/20

Twyford Bathrooms Registered Office, Geberit House, Edgehill Drive, Warwick, CV34 6NH
TEL: +44 (0) 1926 516800 Email: enquiries@geberit.co.uk WEB: www.twyfordbathrooms.com

Technical Specification



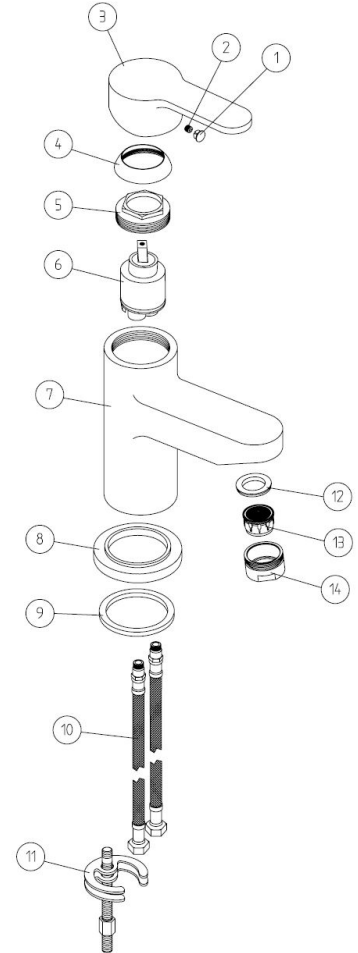
Recommended Operating Pressure	Recommended Operating Temperature	Maximum Static Pressure
Min: 0.3 Bar Max: 5.0 Bar	Hot: 65 °C Cold: 5 °C	10.0 Bar

Flow Rate Max (Ltrs/Min)	0.2 Bar	0.5 Bar	1.0 Bar	2.0 Bar	3.0 Bar	5.0 Bar
With Fitted flow Restrictor	4.3	6.8	7.5	7.5	7.5	7.5
With 3.5ltr flow Restrictor	1.5	2.1	2.8	3.5	3.3	3.2
Without Flow Restrictor	4.3	6.8	9.5	13.1	16.0	20.7

! This tap is **not** thermostatically controlled (e.g TMV 2 or 3) so the temperature of water at the outlet will vary if system temperatures or pressures change. It is advised to fit an approved Thermostatic Mixing Valve to the hot inlet to reduce the risk of scalding.

Tap Installation Instructions

- 1 Fit the base ring onto the bottom of the tap body the raised edge of the base ring sits inside the lip on the base of the tap with the rubber washer facing the basin.
- 2 Insert the fixing bolt into the bottom of the tap, with the slot facing out and using a flat bladed screw - driver tighten it up.
- 3 Screw the flexible tails into the bottom of the tap, by hand, until tight. Do not use PTFE tape, or similar, on the threads.
- 4 Feed the tails and fixing bolt into the hole in the basin, ensuring that the base ring and rubber washer are seated correctly and fully covering the hole.
- 5 From the underside of the basin feed the rubber horseshoe shaped washer over the fixing bolt followed by the metal one. Place the nut over the fixing bolt and tighten until the tap is fixed on the basin. Do not overtighten.
- 6 Connect the hot and cold feeds to the water supply.
- 7 Reinststate the water supply and test for leaks.



Changing Flow restrictor

To Change to flow restrictor to achieve a max flow of 3,5 ltrs / min @ 3 bar unscrew item 8 and replace the flow restrictor (13) with the one supplied in the box marked "3.5 ltr flow restrictor".

