

600 Underslung Basin Unit

ROPER RHODES®
BATH



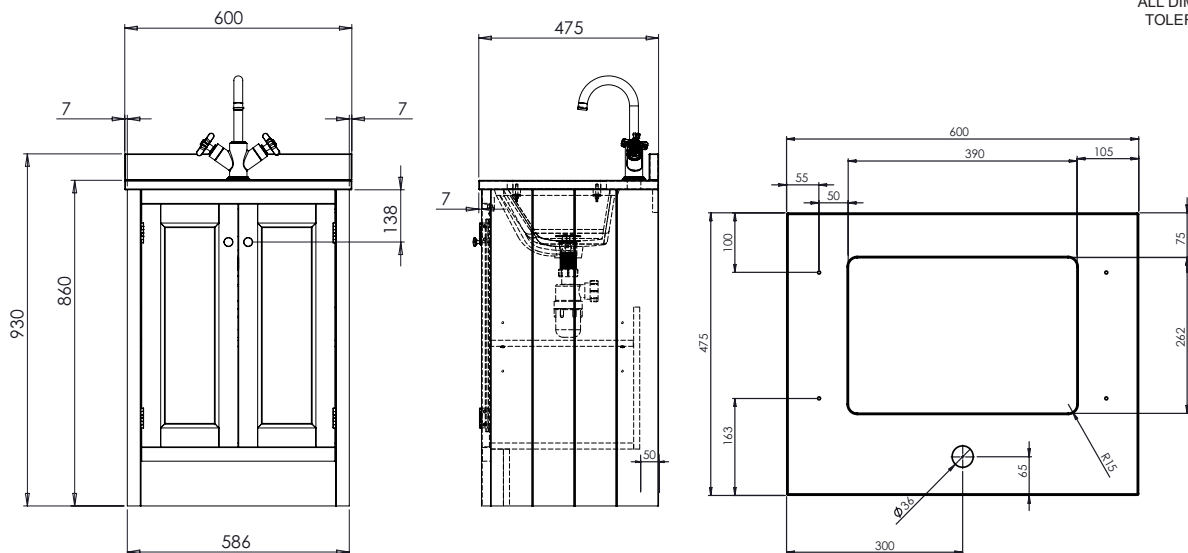
Handle Specification: Chalk White
No. of Handles - 2
Screw Dimensions - 2 x (4mm x30mm)

All other finishes:
No. of Handles - 2
Screw Dimensions 2 x (4mm x 29mm)



NO.	DESCRIPTION	PRODUCT CODE	FIXINGS INCLUDED?	GROSS WEIGHT	NET WEIGHT
1	HAMPTON 600 UNDERSLUNG BASIN UNIT	HAM600US	YES	26.5kg	26.5kg
2	HAMPTON 600 UNDERSLUNG WORKTOP	HAM4W6AUS.AR	N/A	12.6kg	12.6kg
3	HAMPTON 600 UNDERSLUNG BASIN	HAMUSC1	YES	6.5kg	6.5kg

DIMENSIONS



DIAGRAMS NOT TO SCALE
ALL DIMENSIONS IN MM
TOLERANCE OF ± 5MM

FAQ

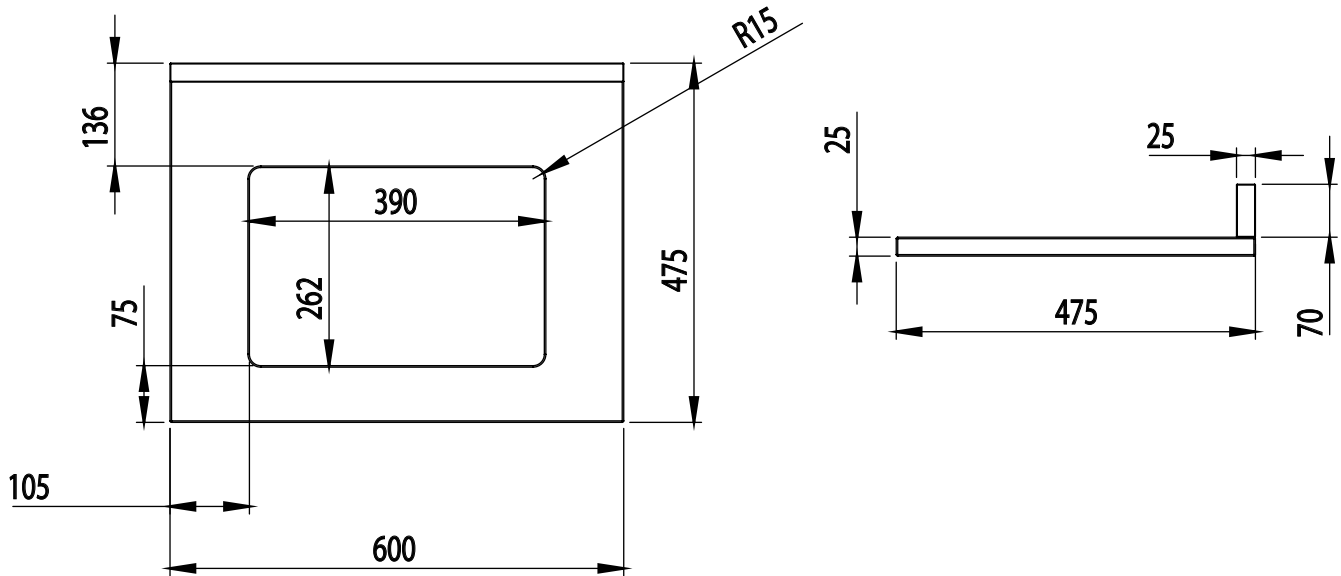
- What is the depth of the units with the door open? 740mm
- What is the width of the unit with the doors open? 1600mm
- Are the shelves adjustable? There are a number of shelf positioning holes drilled into the unit side panels.
- How deep is the basin water level? The bowl will fill 120mm from the waste to the overflow.
- How tall is the worktop upstand? How thick is the worktop? Upstand: 70mm Worktop Thickness: 25mm
- Is the underslung basin glazed on the underside? No.
- Can I use other basins with the worktop? No, the worktop is pre-cut to suit the Hampton Underslung Basin in size.
- Is the basin pre-fixed to the worktop? No, they are supplied separately. Fixing brackets are supplied with the worktops to hold the basin in place.
- Can I repair small areas of damage? Yes, we can supply small touch up paint pens for small paint repairs.
- How is the unit secured in place? The unit can be secured to the wall through the upper brace at the rear of the unit. Fixings not supplied.

Technical Data Sheet

ROPER RHODES®

HAMPTON 600mm Underslung Worktop and Upstand

Whats in the box: 1x HAM4W6US.X + Fixing Pack



Diagrams not to scale
All dimensions in mm
tolerance of +/-5mm

*Dimensions are subject to change, customers are advised to measure actual product before commencing installation.

**Fixing point dimensions are for guidance only/the positions of wall fixing must be checked when product is received.

Materials

Worktop: Solid Surface

Upstand: Solid Surface

Solid Surface Information

Has many names including:

- Corian
- LG Hi-macs

A homogenous compound mixture of polyester and aluminium trihydrate (derived from a natural Bauxite ore). Basically the same material all the way through so can be cut and sanded back to perfect finishes. Aluminium trihydrate is Moulded, vacuum treated and then finished by hand to create a perfectly smooth matt finish which is highly dimensionally accurate. Can be sanded and refinished should any stains occur due to misuse. Can be patch repaired by simple sanding back since material is homogenous (same all the way through).

Material Benefits:

- Point impacts (255g ball dropped from 610mm)
- Stain resistant
- Colourfast
- Temperature resistance

FAQs

Q: What tools are suitable for cutting the worktop?

A: Fine tooth saw, router, circular or jigsaw. Please refer to the instructions provided.

Q: What cleaning products are suitable for this worktop?

A: Please refer to the instructions provided.

Q: Is the marble worktop sealed?

A: The marble is sealed at the point of manufacture. We do recommend to reseal the marble periodically like other natural stone products.

Q: Is the upstand suitable with all taps?

A: The upstand is suitable with all taps except Wessex 3TH.