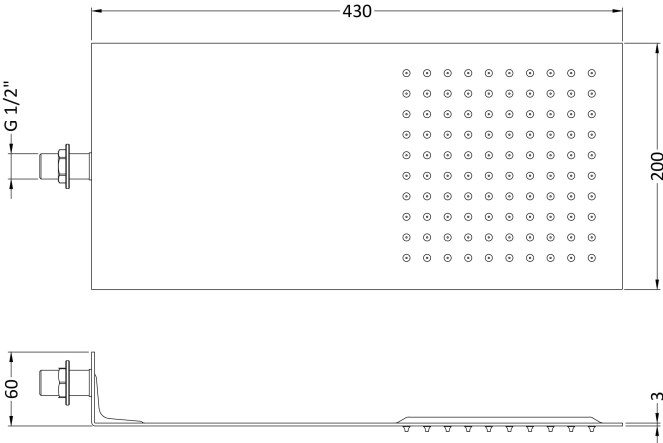
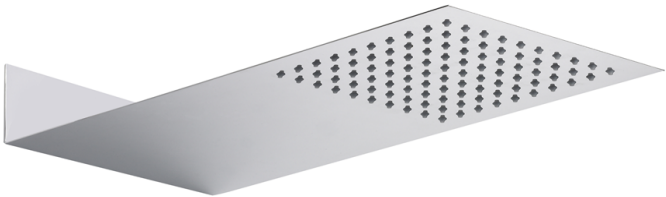


Sales Code: HEAD47

Description: Ultra Thin Fixed Shower Head



Product Dimensions	
Length (mm):	
Width (mm):	200
Height (mm):	60
Depth (mm):	430
Nett Weight (kg):	1.4
Packaging Dimensions	
Length (mm):	210
Width (mm):	70
Height (mm):	510
Gross Weight (kg):	2.12
Packaging Data	
Box Colour:	White Cardboard Box
Box Qty:	1
Label Size:	100 x 50
Label Colour:	White Label
Label Qty:	2
Outer Box Dimensions (If Applicable)	
Length (mm):	
Width (mm):	540
Height (mm):	440
Depth (mm):	370
Gross Weight (kg):	21
Barcode:	5055369010462
Product Details	
Country of Origin:	China
Fitting Instruction:	No
Product Material:	Stainless Steel
Mount Type:	Wall, Surface
Outlet Elbow Supplied:	No
Easy Clean:	Yes
Head Included:	Yes
Handset Included:	No
Body Jets Included:	Not Applicable
No of Body Jets:	Not Applicable
Operating Pressure (bar):	0.5
Valve/Cartridge Type:	Not Applicable
Flow Rates (L/min):	0.1 bar: N/A 0.5 bar: N/A 1 bar: N/A 2 bar: N/A 3 bar: N/A
TMV2 Approved:	No Approval No: N/A
TMV3 Approved:	No Approval No: N/A
WRAS Approved:	No Approval No: N/A
Head Function:	Single
Handset Function:	Not Applicable
Body Jet Info:	Not Applicable
Pipe Size:	Not Applicable
Pipe Centres:	N/A
Colour/Finish:	Chrome
Hose Included:	Not Applicable
No. of Outlets:	N/A

GENERAL FITTING GUIDE

SHOWER HEADS

Important information

(Please leave this installation & user guide with the end user)

This installation guide is for all fixed shower heads.

Prior to making the water connection to the shower arm, please make sure that the supply pipe work has been flushed through to remove any debris.

Safety

We recommend that this product is fitted by a fully qualified installer. The installation must comply with all current water regulations. In order for this product to operate as designed it must be installed and commissioned as stated in this manual.

Aftercare

- When cleaning the product please do not use a substance that could possibly damage the surface finish. We recommend that soapy water with a mild detergent is used.
- Please take care not to damage the surface finish of the product. The finish is polished chrome and can be easily marked.

Installation

Connect the shower head to the shower arm, using the rubber washer supplied to create a water seal.

After securing in place, check for any leaks.