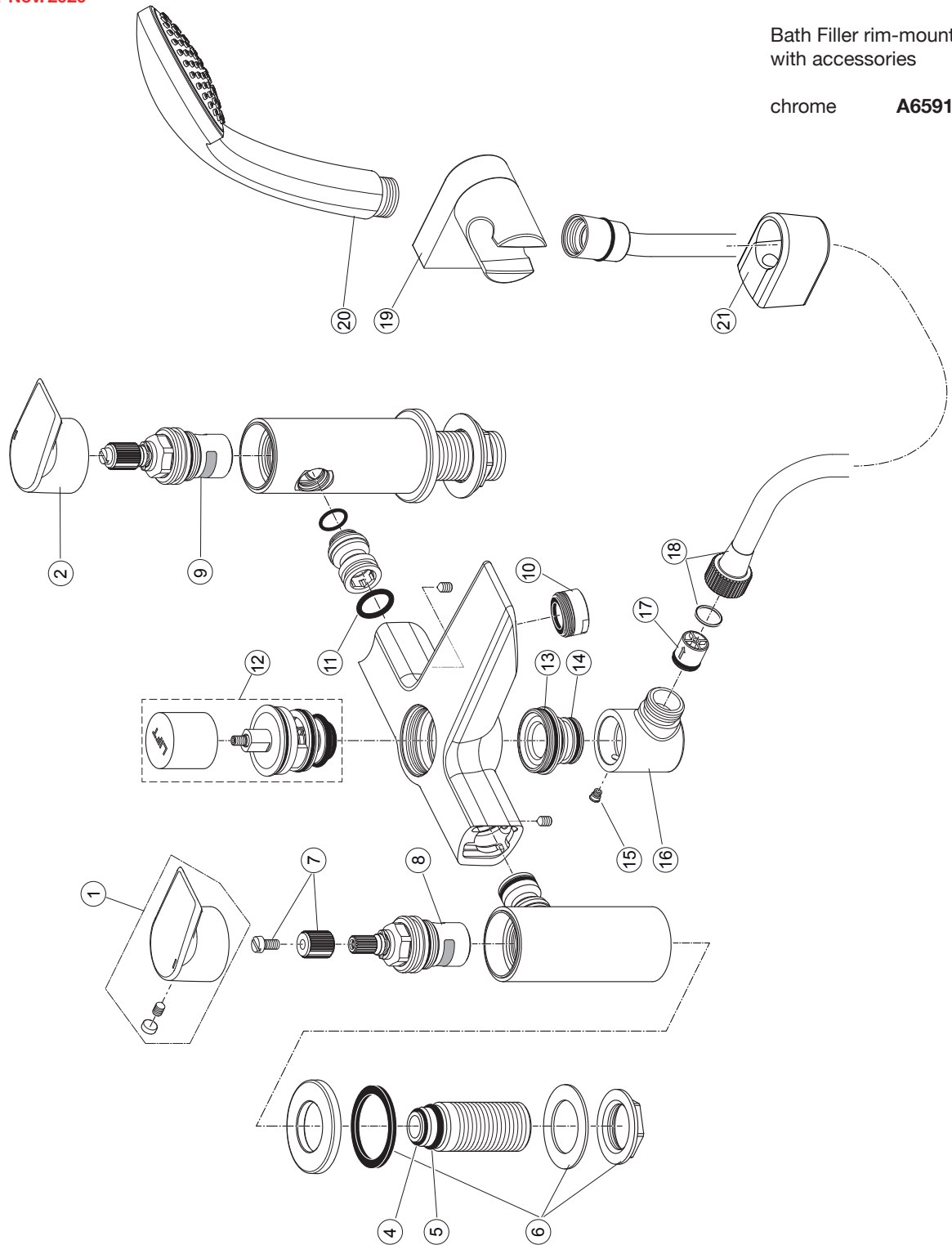


Produced from: **Nov. 2020**

Bath Filler rim-mounted  
with accessories

chrome **A6591AA**

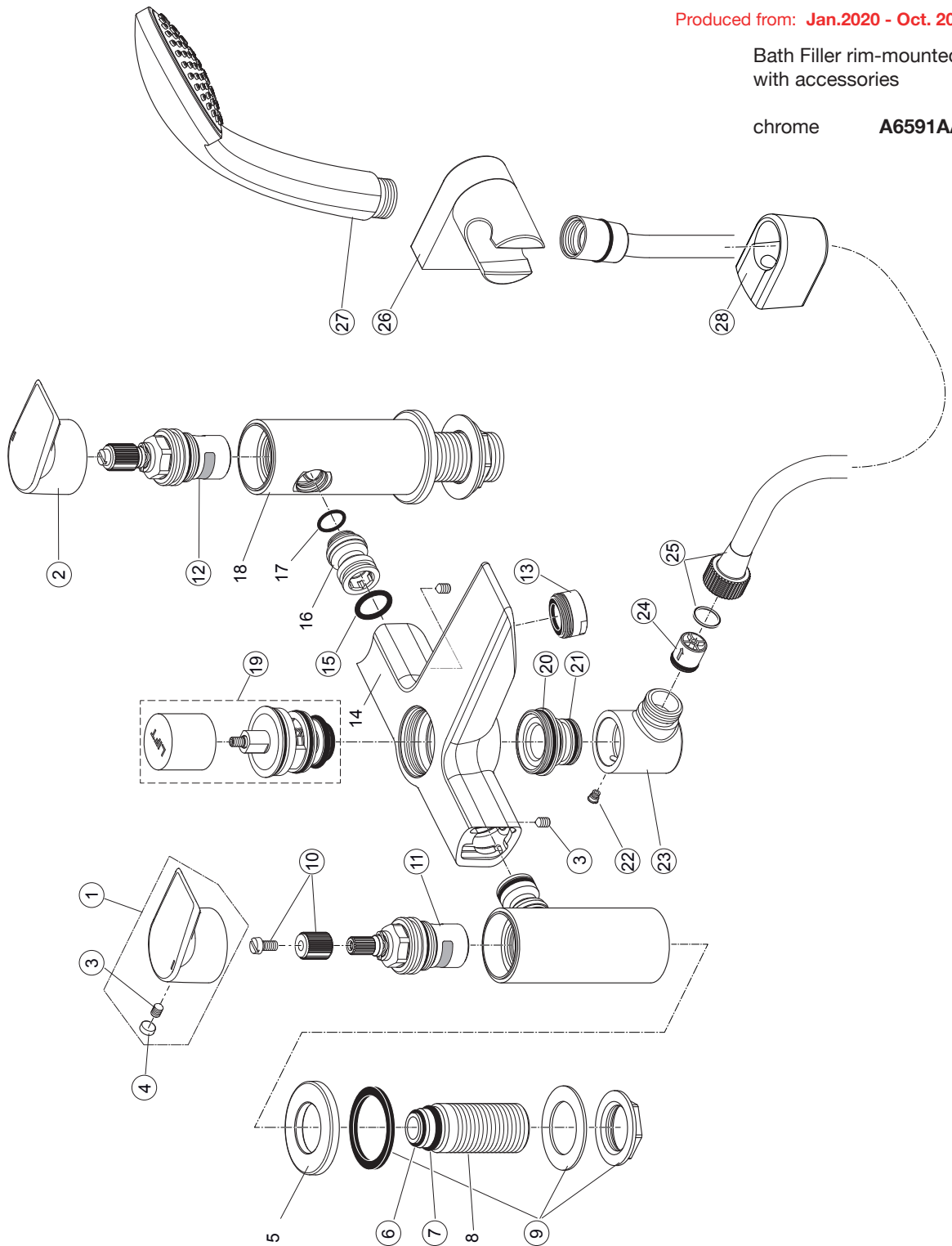


Pos.	Description	Part-Number	Qty.	Pos.	Description	Part-Number	Qty.
1	Handle cpl. red marked	<b>A 861 064 AA</b>	1 Set	14	O - Ring Ø 20 x 2	<b>A 860 395 NU</b>	1 pcs
2	Handle cpl. blue marked	<b>A 861 065 AA</b>	1 Set	15	Screw M5x5.5	<b>A 960 058 NU</b>	1 pcs
4	O - Ring Ø 31,47 x 1,78	<b>A 961 640 NU</b>	2 pcs	16	Elbow for diverter	<b>B 9611 73 AA</b>	1 pcs
5	O - Ring Ø 19 x 2,50	<b>A 860 187 NU</b>	1 pcs	17	Non return valve	<b>A 962 594 NU</b>	2 pcs
6	Fixation Kit	<b>B 960 471 NU</b>	1 Set	18	Shower hose 1800mm	<b>A 963 173 NU</b>	1 pcs
7	Handle adaptor + screw	<b>A 861 446 NU</b>	1 Set	19	Handshower holder	<b>B 960 925 AA</b>	1 pcs
8	Cartridge clsd. anti-clockw.	<b>A 861 247 NU</b>	1 pcs	20	Handspray 1F Ø80mm	<b>B 9400 AA</b>	1 pcs
9	Cartridge closed clockwise	<b>A 861 246 NU</b>	1 pcs	21	Shower hose bracket	<b>B 1364 AA</b>	1 Set
10	Aerator M24x1	<b>A 961 625 AA</b>	1 pcs				
11	O - Ring Ø 16 x 2,5	<b>A 961 326 NU</b>	2 pcs				
12	Diverter cpl.	<b>B 961 172 AA</b>	1 Set				
13	O - Ring Ø 30 x 2	<b>A 860 569 NU</b>	1 pcs				

Produced from: Jan.2020 - Oct. 2020

Bath Filler rim-mounted  
with accessories

chrome **A6591AA**

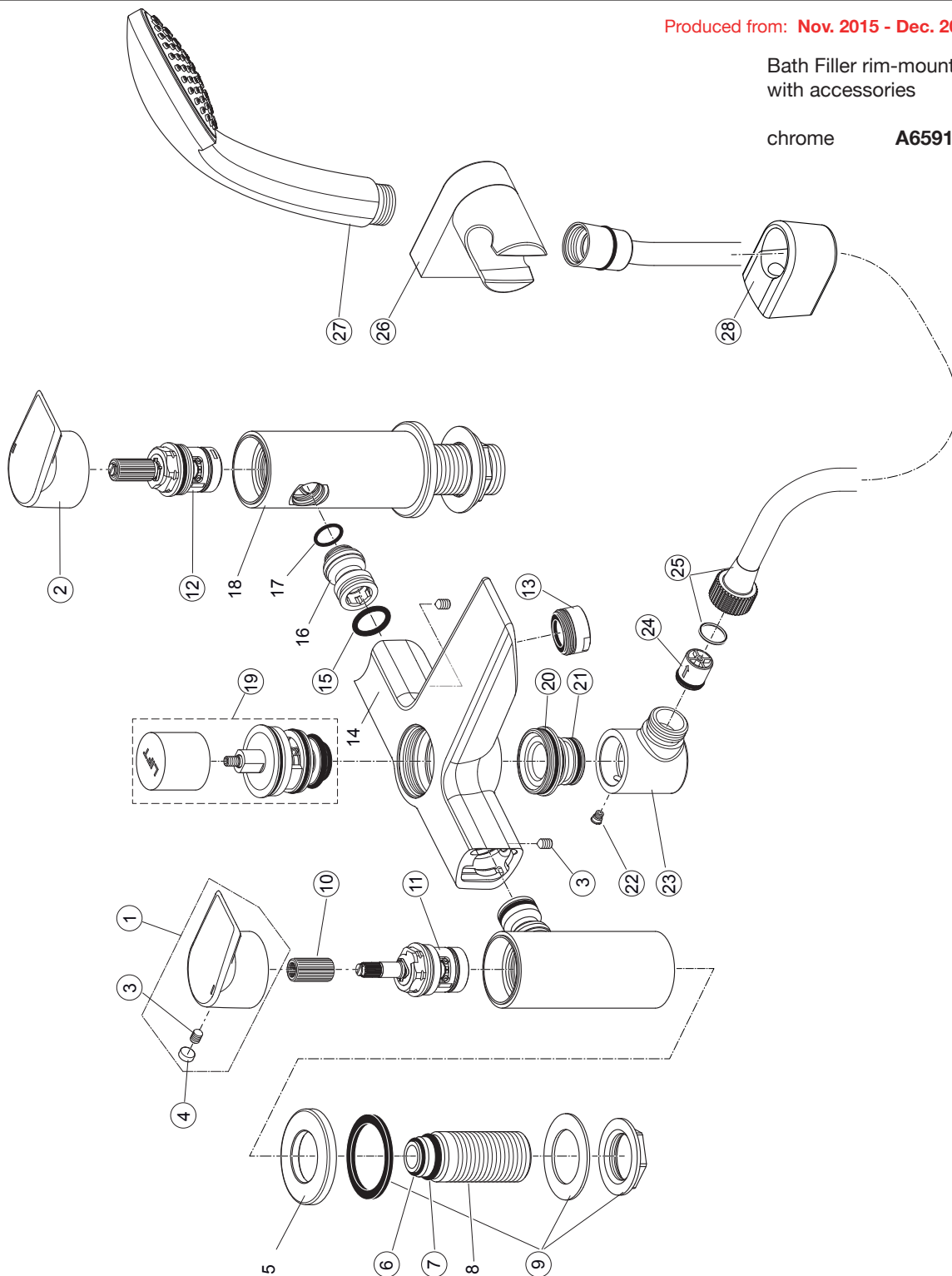


Pos.	Description	Part-Number	Qty.	Pos.	Description	Part-Number	Qty.
1	Handle cpl. red marked	<b>A 861 064 AA</b>	1 Set	15	O - Ring Ø 16 x 2,5	<b>A 961 326 NU</b>	2 pcs
2	Handle cpl. blue marked	<b>A 861 065 AA</b>	1 Set	16	Connector nipple		
3	Screw M5 x 6 DIN 914	<b>F 961 001 NU</b>	1 pcs	17	O - Ring Ø 13 x 1,5		
4	Handle cap	<b>B 960 583 NU</b>	1 pcs	18	Body (Cartridge)		
5	Escutcheon			19	Diverter cpl.	<b>B 961 172 AA</b>	1 Set
6	O - Ring Ø 31,47 x 1,78	<b>A 961 640 NU</b>	2 pcs	20	O - Ring Ø 30 x 2	<b>A 860 569 NU</b>	1 pcs
7	O - Ring Ø 19 x 2,50	<b>A 860 187 NU</b>	1 pcs	21	O - Ring Ø 20 x 2	<b>A 860 395 NU</b>	1 pcs
8	Connector G3/4"			22	Screw M5x5.5	<b>A 960 058 NU</b>	1 pcs
9	Fixation Kit	<b>B 960 471 NU</b>	1 Set	23	Elbow for diverter	<b>B 9611 73 AA</b>	1 pcs
10	Handle adaptor + screw	<b>A 861 446 NU</b>	1 Set	24	Non return valve	<b>A 962 594 NU</b>	2 pcs
11	Cartridge clsd. anti-clockw.	<b>A 861 247 NU</b>	1 pcs	25	Shower hose 1800mm	<b>A 963 173 NU</b>	1 pcs
12	Cartridge closed clockwise	<b>A 861 246 NU</b>	1 pcs	26	Handshower holder	<b>B 960 925 AA</b>	1 pcs
13	Aerator M24x1	<b>A 961 625 AA</b>	1 pcs	27	Handspray 1F Ø80mm	<b>B 9400 AA</b>	1 pcs
14	Body (Bath filler)			28	Shower hose bracket	<b>B 1364 AA</b>	1 Set

Produced from: Nov. 2015 - Dec. 2019

Bath Filler rim-mounted  
with accessories

chrome **A6591AA**



Pos.	Description	Part-Number	Qty.	Pos.	Description	Part-Number	Qty.
1	Handle cpl. red marked	<b>A 861 064 AA</b>	1 Set	15	O - Ring Ø 16 x 2,5	<b>A 961 326 NU</b>	2 pcs
2	Handle cpl. blue marked	<b>A 861 065 AA</b>	1 Set	16	Connector nipple		
3	Screw M5 x 6 DIN 914	<b>F 961 001 NU</b>	1 pcs	17	O - Ring Ø 13 x 1,5		
4	Handle cap	<b>B 960 583 NU</b>	1 pcs	18	Body (Cartridge)		
5	Escutcheon			19	Diverter cpl.	<b>B 961 172 AA</b>	1 Set
6	O - Ring Ø 31,47 x 1,78	<b>A 961 640 NU</b>	2 pcs	20	O - Ring Ø 30 x 2	<b>A 860 569 NU</b>	1 pcs
7	O - Ring Ø 19 x 2,50	<b>A 860 187 NU</b>	1 pcs	21	O - Ring Ø 20 x 2	<b>A 860 395 NU</b>	1 pcs
8	Connector G3/4"			22	Screw M5x5.5	<b>A 960 058 NU</b>	1 pcs
9	Fixation Kit	<b>B 960 471 NU</b>	1 Set	23	Elbow for diverter	<b>B 9611 73 AA</b>	1 pcs
10	Handle adaptor	<b>N 042 677 NU</b>	2 pcs	24	Non return valve	<b>A 962 594 NU</b>	2 pcs
11	Cartridge clsd. anti-clockw.	<b>A 961 010 NU</b>	1 pcs	25	Shower hose 1800mm	<b>A 963 173 NU</b>	1 pcs
12	Cartridge closed clockwise	<b>A 960 462 NU</b>	1 pcs	26	Handshower holder	<b>B 960 925 AA</b>	1 pcs
13	Aerator M24x1	<b>A 961 625 AA</b>	1 pcs	27	Handspray 1F Ø80mm	<b>B 9400 AA</b>	1 pcs
14	Body (Bath filler)			28	Shower hose bracket	<b>B 1364 AA</b>	1 Set