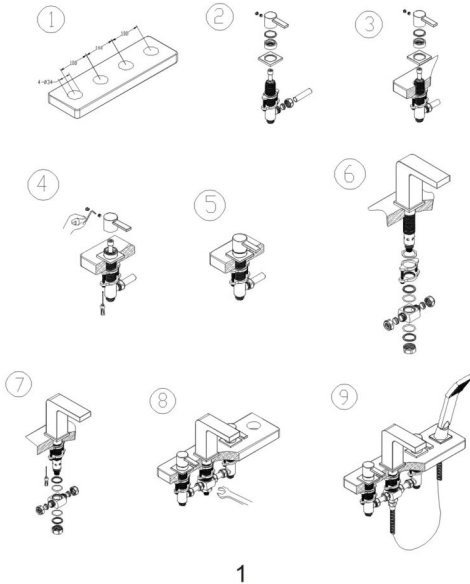


# Installation for 4-hole Deck Mounted Bath Shower Mixer

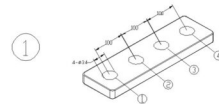
## Preview of Installation Procedures:



1

## Installation Procedures:

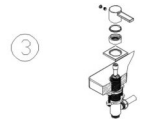
**Step 1:** Drill four holes on the bath as per the drawing shown below.



**Step 2:** Get all the components below ready for hole No. 1

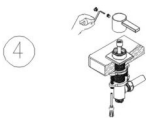


**Step 3:** Assemble all the components together as shown below:

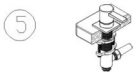


**Step 4:** Tighten the handle with allen key, tighten the mounting plate with screw driver.

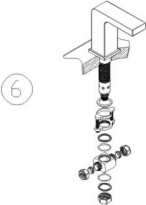
2



**Step 5:** Hole No. 1 is installed as per the drawing below:



**Step 6:** Get all the components in place for hole NO. 2.

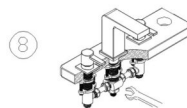


**Step 7:** Assemble all the components together and tighten the mounting plate with screw driver

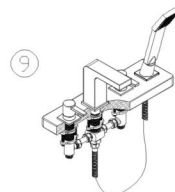
3



**Step 8:** Components for holes No. 3 should be installed as per hole No.1. Tighten all the nuts with spanner.



**Step 9:** Assemble all the components for hole NO. 4. Connect the hose between hole NO. 2 and No.4. This tap is installed now.



4