

AFTERCARE INSTRUCTIONS

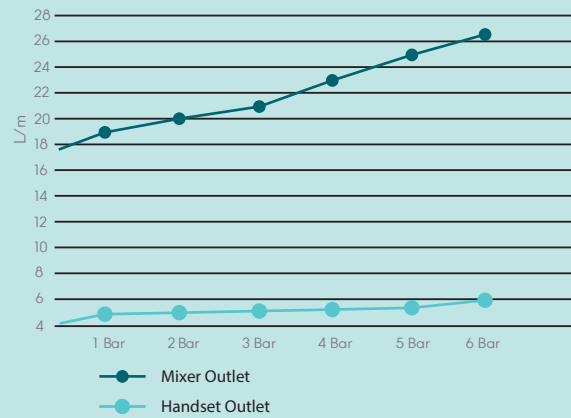
These products have a high quality, durable finish which in order to preserve, should be treated with care.

Clean with warm soapy water and a soft damp cloth only.

Cleaning products, including non-scratch ones could damage the finish.

Maintain your brassware by wiping dry after use, removing ater drops and soap deposits

Water Flow Rate:



CUSTOMER SERVICE

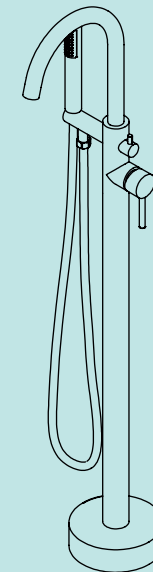
t: +44(0)208 686 5100
e: technical@saneux.com

Iain Stewart Centre, Beehive
Ring Road, Gatwick, RH6 0PB

www.saneux.com

COS

INSTALLATION INSTRUCTIONS



CO306

Floor Standing bath Shower Mixer

saneux

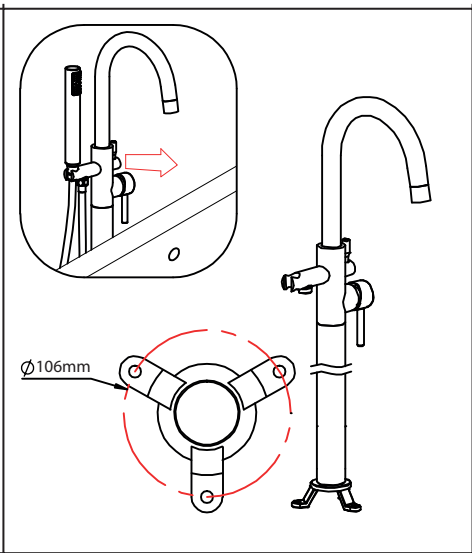
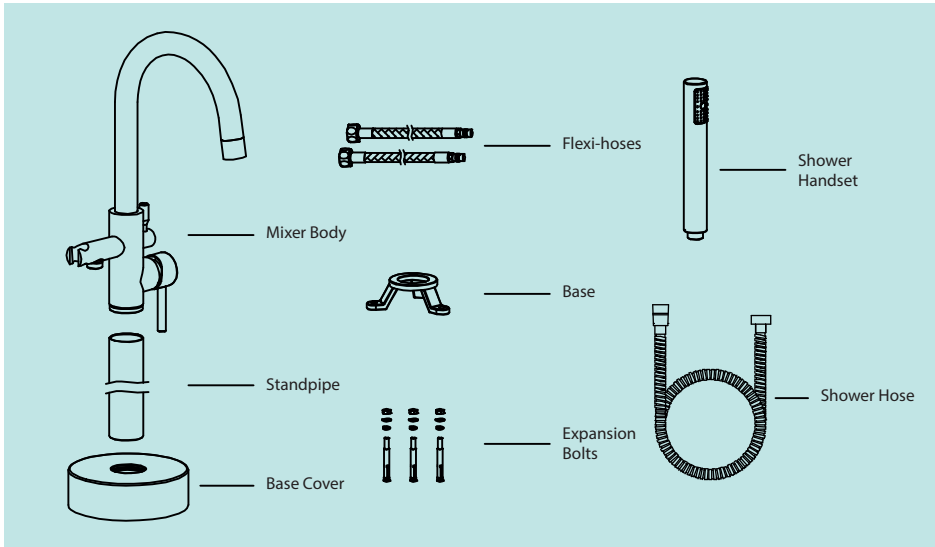
BEFORE YOU BEGIN

This product should only be fitted by a qualified plumber to NVQ level 3. Should the installation be completed by a non-qualified person then the guarantee may be considered invalid.

Before installation ensure the water mains are off.

Prior to starting installation, check below to ensure you have all the required components.

COMPONENTS

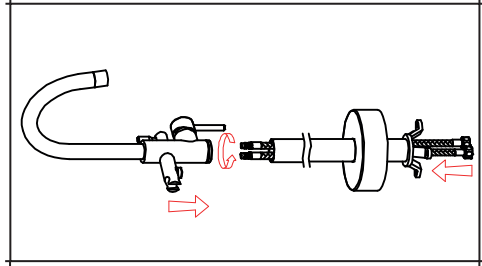
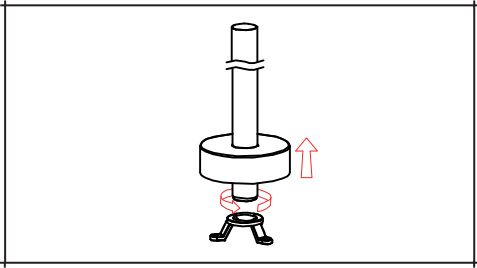


1. Drill a hole in the floor where you want to locate the Bath shower mixer, between 57 & 65mm in diameter, with suitable plumbing connections prepared.

Then, mark out and drill fixing holes for the provided expansion bolts in the floor, using the base as a reference.

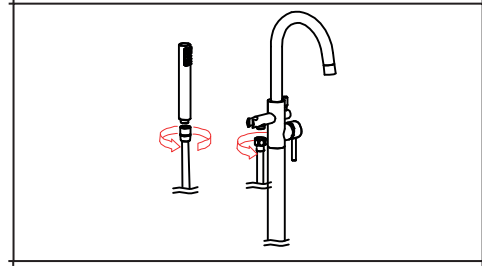
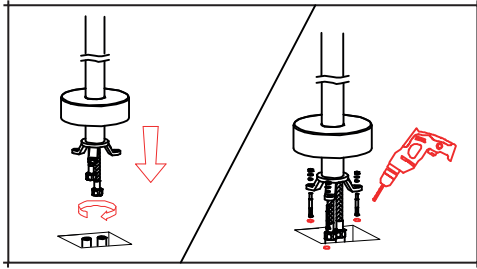
NOTE: Ensure the mixer will align as intended over the bath. By initially installing the base to the standpipe and mixer to check.

2. Place the cover over the standpipe and screw on the base.



3. Thread the flexi-hoses up the standpipe and fix the flexi-hoses to the mixer. Making sure that the Hot and Cold are correctly located. Cold = Back / Hot = Front. Then attach the mixer body to the standpipe.

4. Locate the assembly on the desired location and attach the flexi-hoses through the prepared hole to the pipework and then secure the standpipe to the floor using the expansion bolts provided.



5. Install the handset and hose. Place a rubber washer in either end of the shower hose before tightening.

6. If required, loosen the grub screw at the back of the mixer body to adjust the direction of the spout. Once in position, tighten in place using the provided allen key and plug with the grub screw cover.

