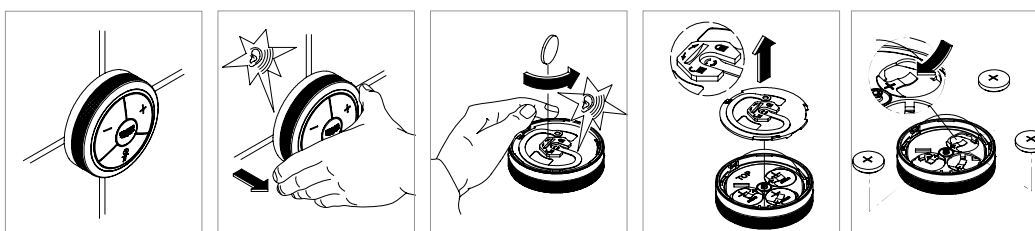


REPLACING THE BATTERIES

Low battery capacity is indicated by a shorter display duration of the illuminated ring.

Battery type: 3x CR2450 (3V)

Only use new batteries of same make and type. Do not use rechargeable batteries.



Make sure the control unit is dry before removing.

Pull the Digital Control Unit to remove it from the fixation plate.

Use a coin to turn the back plate.

Remove the back plate.

Replace all batteries.

FACTORY SETTINGS (DEFAULT)

All digital fittings are adjusted to the following parameter

Cold water supply: 15°C | Hot water supply: 65°C | Pressure: 3 bar

| | Digital basin mixer | Digital sink mixer | Digital bath & shower |
|---------------------------------------|---------------------|--------------------|-----------------------|
| Flow rate | 3/4 of max. volume | 3/4 of max. volume | 3/4 of max. volume |
| Temperature | 23°C | 23°C | 37°C |
| Max. Temperature | 56°C | 56°C | 46°C / US: 42°C |
| SafeStop | 42°C | 42°C | 38°C |
| Automatic filling/ safety shut-off | 1 min. | 1 min. | 20 min. |

CARE INSTRUCTIONS

Please read the following care instructions because damage to the surface and underlying material resulting from improper treatment is not covered by warranty.

Do not use any abrasive sponges or scouring agents for cleaning. We also advise you not to use cleaning agents containing solvent or acid, limescale removers, household vinegar and cleaning agents with acetic acid in them. They are aggressive to the surface and will leave your fitting dull and scratched. As the formulations of commercially available

cleaning agents frequently change, we cannot guarantee they will provide the gentle care our fittings deserve.

Clean the fitting with a little soap and a moist cloth only, then simply rinse off and wipe dry. You can avoid lime spots by drying the fitting each time it is used. If lime deposits do occur, remove them with GrohClean, our environmentally-friendly cleaning liquid. GrohClean is specially formulated to clean the surface of our fittings gently. GrohClean is available from your supplier.

CONTACT GROHE

grohe.com

technicalsupport-hq@grohe.com

Page 7