

TECHNICAL DATA SHEET

Slim Soft Close Secure Fix Toilet Seat - DCI4037-SF

TAVISTOCK

NO.	Description	Product Code	Fixings included	Gross Weight
I	Soft Close Toilet Seat	DCI4037-SF	YES	2.4KG



Spares Codes:

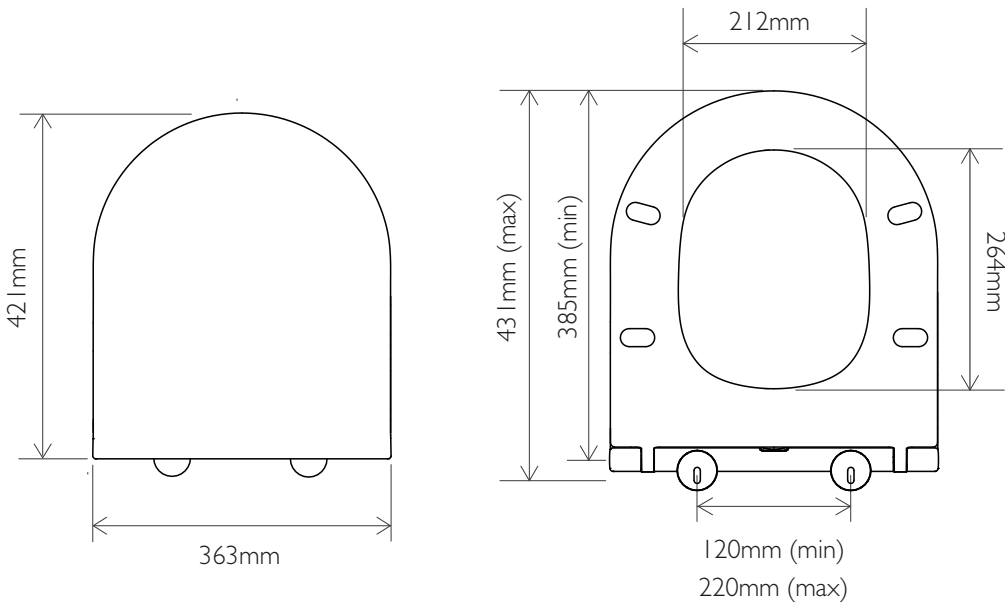
Slim Seat Secure Fix Hinge Fixing Kit (inc. template) - SP21189

Slim Seat Buffer Pack (2x Lid/4x Ring per pack) - SP17583

Slim Seat Secure Fix Template - SP21185

DIMENSIONS

DIAGRAMS NOT TO SCALE | ALL DIMENSIONS IN MM TOLERANCE OF ± 5MM
ALL PRODUCTS CONFORM TO BRITISH STANDARDS



*Dimensions are subject to change, customers are advised to measure actual product before commencing installation.

- FAQs
- Q - What's the maximum test load of the seat?
A - 150kg
- Q - What are the fixings made from?
A - Stainless Steel Cover Plates/Screws, Nylon Anchor Plates, Top Fix Inserts
- Q - What finish are the hinge covers supplied with the seat?
A - Chrome
- Q - Can the seat hinges be upgraded to a different finish?
A - Yes using DC4019 (black) or DC4020 (brushed brass)
- Q - What colour finish is the seat?
A - Alpine White

Key Dimensions	Descriptions	Key Dimensions (mm)
Seat/Lid	Front to Back	421mm
Seat/Lid	Left to Right	363mm
Ring Hole	Front to Back	264mm
Ring Hole	Left to Right	212mm
Seat	Overall Thickness	39mm
Width of Back of Seat		363mm