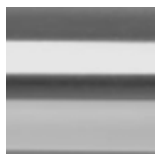
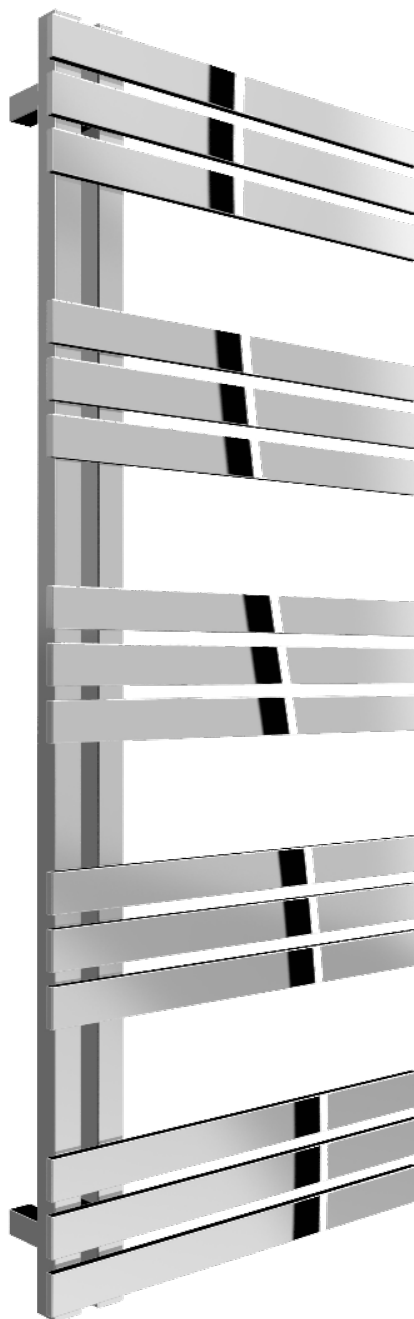


# LOVERE

Stainless Steel Towel Rail



**REINA**  
DESIGNER RADIATOR



polished  
stainless steel

**REINA**  
DESIGNER RADIATOR



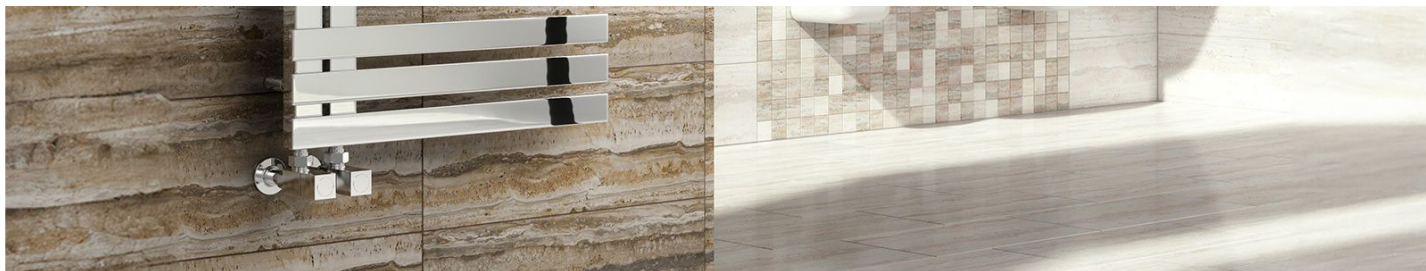


# LOVERE

Stainless Steel Towel Rail



**REINA**  
DESIGNER RADIATOR

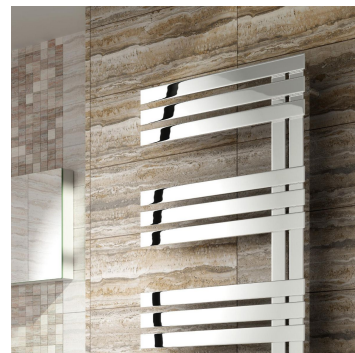
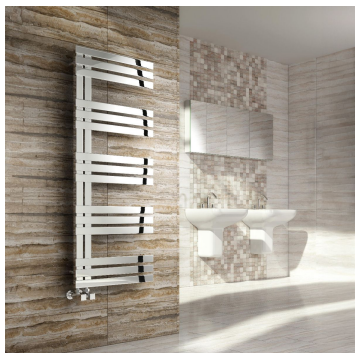


25 Years Guarantee



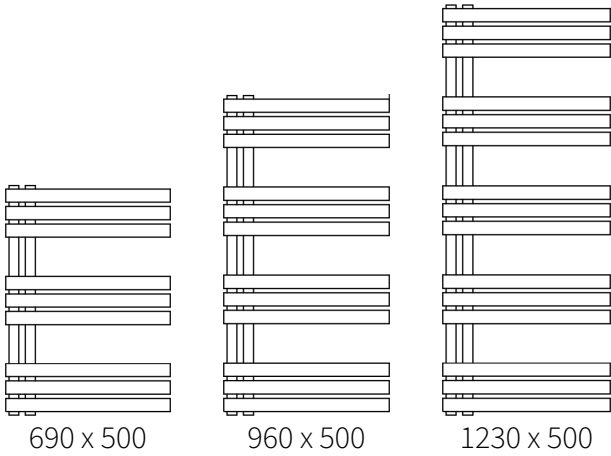
Material: Stainless Steel

The Lovere Modern Offset Ladder Towel Radiator boasts horizontally aligned flat tubes made from premium stainless steel with a sleek, polished finish. Its versatile design, which can be installed in either direction, ensures excellent heat distribution and is supported by a 25-year warranty, guaranteeing both longevity and elegance.

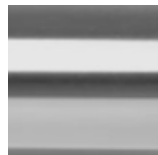




Available Sizes



Available Colours



polished  
stainless steel

# LOVERE

Stainless Steel Towel Rail



## Dimensions & Technical Data

Height (mm)	Width (mm)	Pipe Centres (mm)	Wall to Pipe Centres (mm)	Wall Distance (mm)	Dry Weight	No. Bars	Fuel Type
690	500	50	65-80	90-115	-	9	C/E/D
960	500	50	65-80	90-115	-	12	C/E/D
1230	500	50	65-80	90-115	-	15	C/E/D

C: Central Heating / E: Electric / D: Dual Fuel



Central Heating Heat Outputs

Model/SKU	Height (mm)	Width (mm)	Colour	Heat Outputs $\Delta T50^{\circ}\text{C}$		Heat Outputs $\Delta T60^{\circ}\text{C}$	
				BTU	Watts	BTU	Watts
RNS-LVR5069P	690	500	Polished Stainless Steel	751	220	961	282
RNS-LVR5096P	960	500	Polished Stainless Steel	1163	341	1489	437
RNS-LVR5123P	1230	500	Polished Stainless Steel	1621	475	2075	608