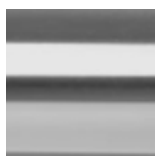


ALENTO

Stainless Steel Towel Rail



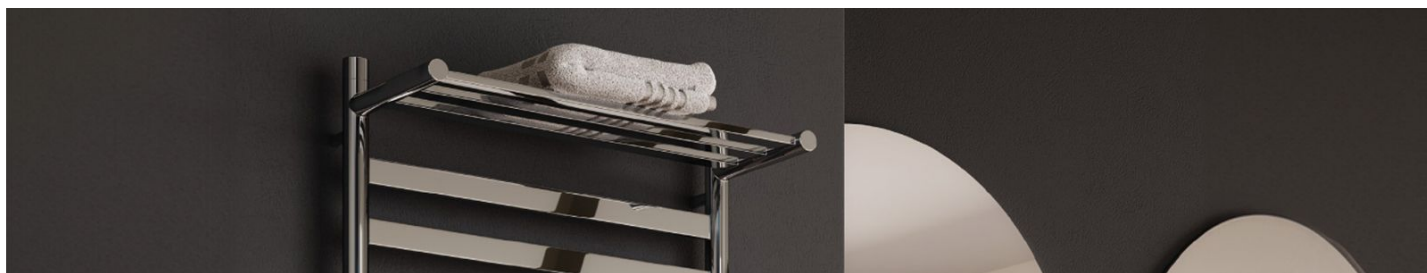
REINA
DESIGNER RADIATOR



polished
stainless steel

REINA
DESIGNER RADIATOR



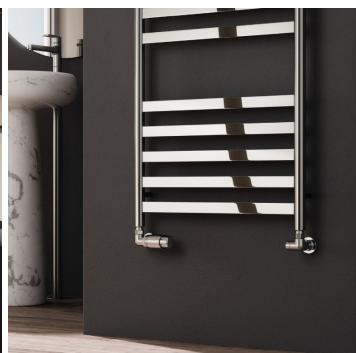


25 Years Guarantee



Material: Stainless Steel

The Alento Towel Radiator seamlessly blends modern functionality with elegance, featuring an integrated towel shelf and a sophisticated design that incorporates both square and circular elements. Constructed from high-quality stainless steel with a sleek polished finish, it provides outstanding heat distribution and is backed by a 25-year warranty, making it a dependable option for any bathroom.



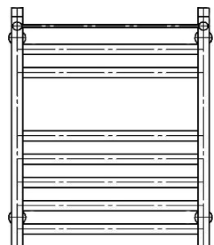
ALENTO

Stainless Steel Towel Rail



REINA
DESIGNER RADIATOR

Available Sizes

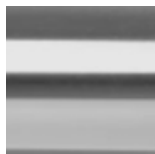


720 x 530

1120 x 530

1450 x 530

Available Colours



polished
stainless steel



Dimensions & Technical Data

Height (mm)	Width (mm)	Pipe Centres (mm)	Wall to Pipe Centres (mm)	Wall Distance (mm)	Dry Weight	No. Bars	Fuel Type
720	530	500	50-60	245-255	-	10	C/E/D
1120	530	500	50-60	245-255	-	14	C/E/D
1450	530	500	50-60	245-255	-	17	C/E/D

C: Central Heating / E: Electric / D: Dual Fuel



Central Heating Heat Outputs

Model/SKU	Height (mm)	Width (mm)	Colour	Heat Outputs $\Delta T50^{\circ}\text{C}$		Heat Outputs $\Delta T60^{\circ}\text{C}$	
				BTU	Watts	BTU	Watts
RNS-ALT072	720	530	 Polished Stainless Steel	843	247	1079	316
RNS-ALT112	1120	530	 Polished Stainless Steel	1196	351	1531	449
RNS-ALT145	1450	530	 Polished Stainless Steel	1497	439	1916	562