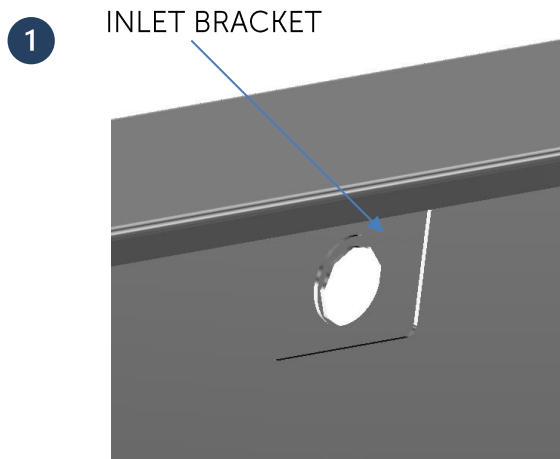


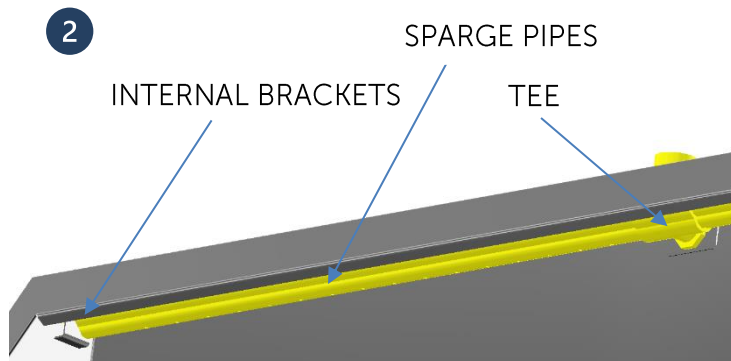
INSTALLATION

Installation - Installazione - Installation - Montage - Instalación - Montering - Монтаж
 Montáž - Paigaldamine - Εγκατάσταση - Beszerelés - Montavimas - Montāža – Instalare
 Инсталација - Montaž - Установка - Montaža - Montáž - Montaj - Інсталяція

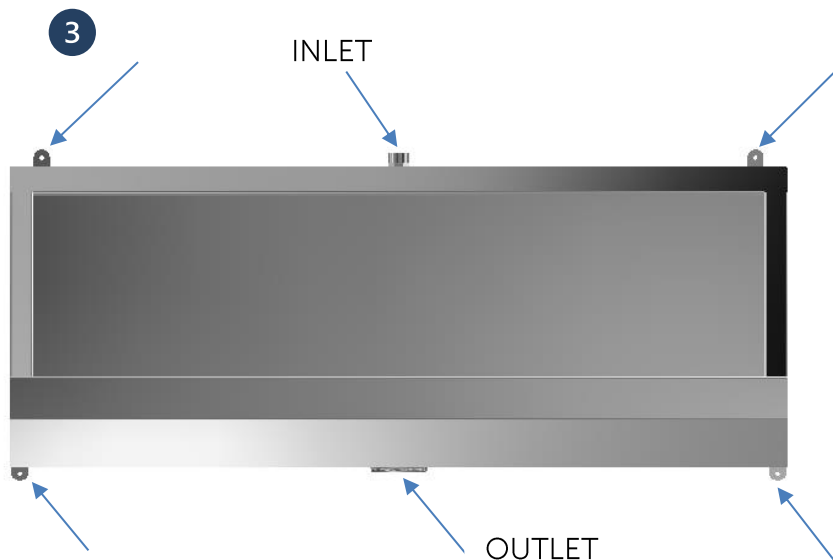
S1287MY



Apply Silicon Sealant (Not Supplied) to the inlet bracket and position in the urinal ensuring the holes line up depending on the inlet orientation (Top or Rear).



Connect the Tee (Supplied) to the Sparge Pipes (Supplied). Hook the Sparge Pipe over the internal brackets (both ends). Position the Tee through the hole in the urinal depending on the inlet orientation (Top or Rear). Fasten the Tee using the Coupler (Supplied) to the urinal.

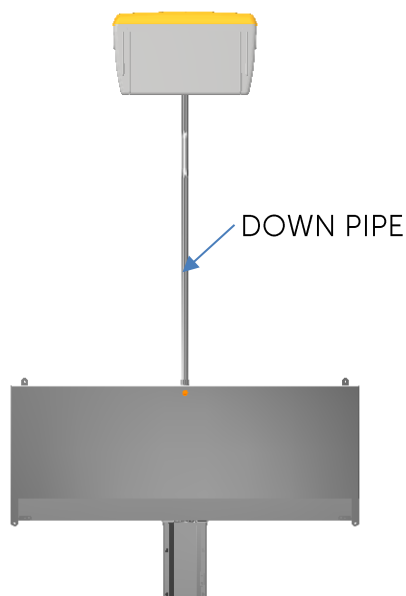


Position the Urinal to the desired height and mark drill positions through holes.
 If rear inlet mark position of inlet and drill through wall to suit.
 Remove the Urinal and drill holes to suit suitable fixings (Not Supplied).
 Fasten the urinal to the wall using suitable fixings (Not Supplied).
 Fit the Waste (Supplied) to the Urinal.
 Connect to the on site plumbing.



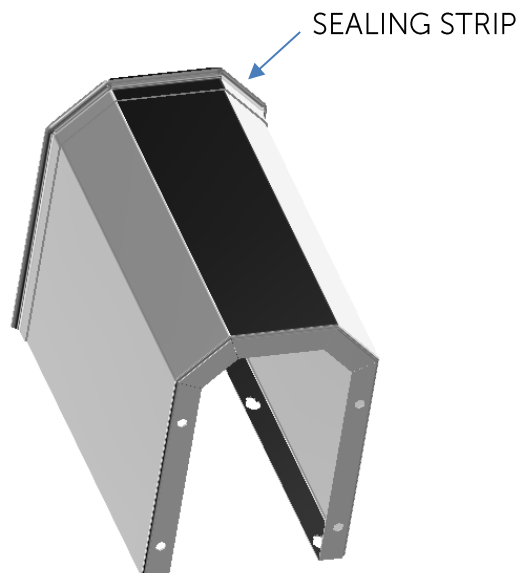
Offer the Cistern (Supplied) to the wall and mark fixing positions.
 Use a Power Drill and drill holes to fit suitable fixings (Not supplied).
 Fit the Cistern to the wall using suitable fixings (Not Supplied).

5



Fit the Down Pipe (Supplied) to the Cistern & Coupler. Use the Wall Fixing Kit (Supplied) to secure the Down Pipe.

6

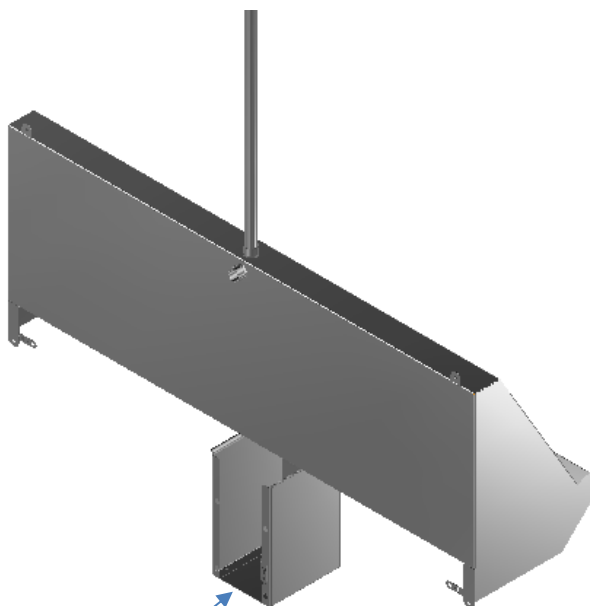


Fit the Sealing Strip (Supplied) to the Trap Shroud.

Remove the Trap Shroud Access Plate and position the Shroud under the Urinal ensuring a tight seal.

Mark drill positions through holes. Remove and use a Power Drill and drill holes to suit suitable fixings (Not Supplied).

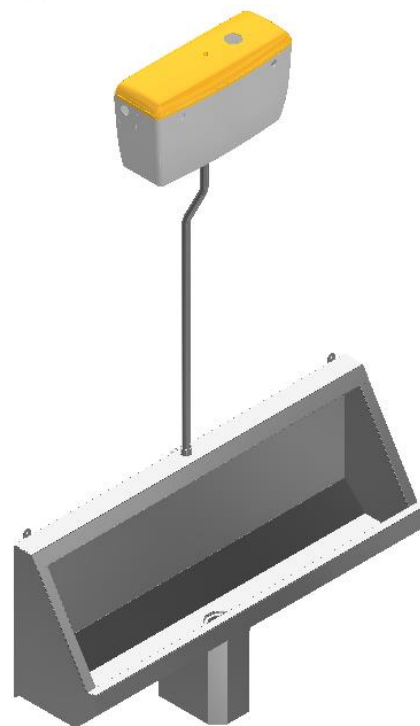
7



TRAP SHROUD COVER

Insert suitable fixings to the drilled holes (Not Supplied)
Replace the Waste Shroud through the key slots.
Re-attach the Trap Shroud cover.

8



The Urinal must be installed by a suitably qualified professional.

Ensure the product has a connection to the Earth Tag(s).

Your product should now be ready for use.

Ideal Standard International NV
Corporate Village – Gent Building
Da Vincilaan 2
B1935 – Zaventem
Belgium



BE +32 (0)2 325 66 33
BG +359 675 30362
DE +49 (0)228 521 580
EG +202 26969700
FR +33 (0)1 49 38 28 00
GB 01482 496 318
GR +30 210 67 90 810
HR +3859122 99 304

HU +36 30 6991 594
IT 800 652 290
ME +9714 804 2400
NL +31 (0)77 355 08 08
PL +48 71 7868 301/302
RO +40 21 3223 201/202
SI 00386 59919040
TR +90 216 314 87 87

UA +359 675 30 468
AL/XK/BA +359 887 709 696
CZ/SK +420 417 592 179
DK/NO/SE +45 75 84 10 10
ES/PT +34 93 561 80 00
LV/LT/EE +371 673 57 792
RS/MK/ME +381 11 713 80 58
RU/MD +7 495 669 23 11

*Armitage
Shanks*