

Atlas

CONCEALED THERMOSTATIC SEQUENTIAL SHOWER VALVE - TOP OR BOTTOM OUTLET



Product Code	SHWRPKSPA6
Weight (Kg)	2.3
Finish	Chrome
Max Inlet Pressure (Static)	10 Bar
Min Operating Pressure (dynamic)	0.2 Bar

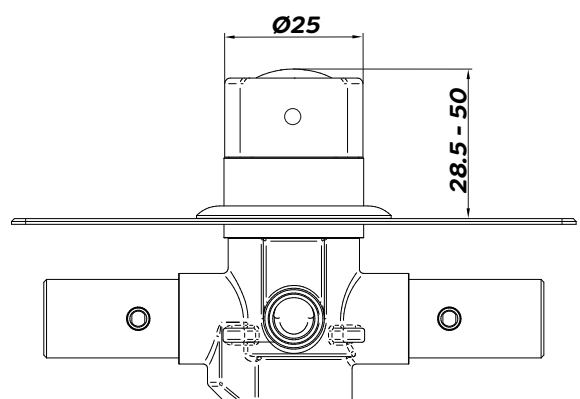
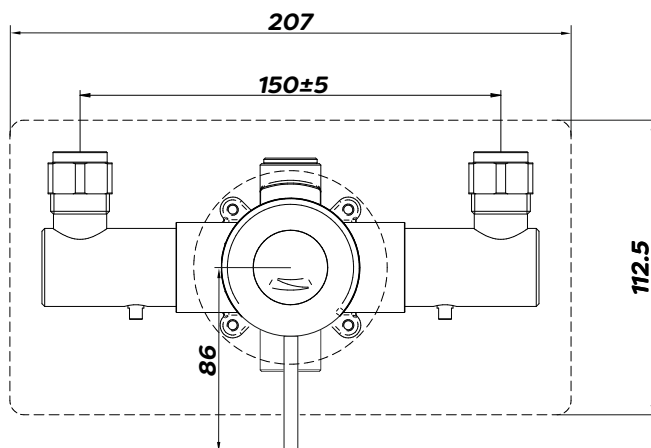
Flow Rate Performance (Pressure= bar/dynamic - Flow = Ltrs/min) (Handset)										
Pressure	0.2	0.5	0.75	1.0	1.5	2.0	2.5	3.0	3.5	4.0
L/min	3.78	3.9	4.32	5.31	7.08	8.01	8.37	8.49	8.56	9.36

Key features:

- Factory Pre-set Temperature of 43°C with max temp stop
- Temperature stability of +/-2°C
- 15mm compression inlet connection
- 15mm compression outlet connection
- Suitable for unvented, pressurised, gravity and combination systems
- 10°C temperature differential required to achieve hot or cold failsafe
- Max Inlet Temperature of 85°C

Description:

Fitted with a long lever to aid users with limited dexterity, this valve features an inclusive and design that benefits from anti-scald technology.



All dimensions are approximate and subject to normal variation. Although every effort is made to change the above product specification, Lecico reserve the right to do so without prior notification if necessary. All guarantees are against manufacturers defects. Full information on guarantees available upon request.

Lecico
bathrooms
a great deal more