

Atlas

CONCEALED FLUSH VALVE



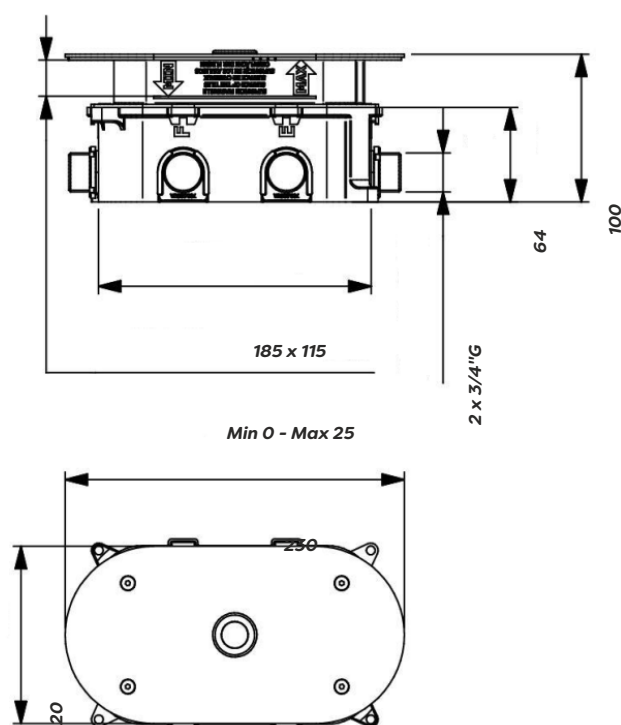
Product Code	URIRCONFLUSH
Material	Mixed metals
Waterless	No
Colour	Silver
Flushing mechanism	Infra-red

Key features:

- Water saving
- Touch free operation
- Battery life approx 220,000 cycles

Description:

This Infra-red urinal flush control is ideal for public toilets and washrooms. The users presence is detected by a sensor which controls a solenoid valve to turn on a timed flow of water. This removes the need for any physical contact with the flushing device lowering the chances of coming to contact with unhygienic surfaces.



Max Inlet Pressure (static)	8 Bar
Min Operating Pressure (dynamic)	1 Bar
Max Inlet Temperature	70°C
Power Supply 6V lithium battery Auto flush feature operates after 24 hours of non usage	

All dimensions are approximate and subject to normal variation. Although every effort is made not to change the above product specification, Lecico reserve the right to do so without prior notification if necessary. All guarantees are against manufacturers defects. Full information on guarantees available upon request.

Lecico
bathrooms
a great deal more