



# Coronation

Coronation Bath Filler

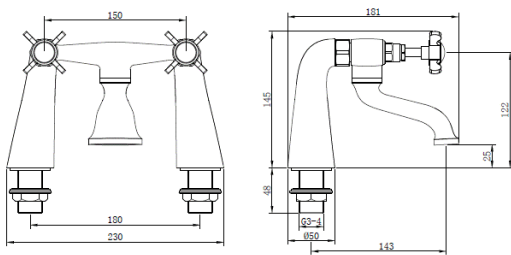
Product Code: CR26

Finish: Chrome

## Features

- Construction:** Brass
- Valve/Cartridge type:** Non-rising Spindle Headworks
- Supply:** Suitable For Low Pressure Systems
- Working Pressures:** 0.1 - 5.0 bar
- Inlet connections:** 3/4" BSP
- Flexi or Copper:** N/A

- Suitable For High & Low Pressure Systems
- Non-Rising Spindle Headworks
- Brass Backnuts



\*Please refer to website for full warranty details.

## Flow (Bar - l/min, open outlet)

### Spout

Flow 0.1	Flow 0.3	Flow 0.5	Flow 1.0	Flow 2.0	Flow 3.0	Flow 4.0	Flow 5.0
5.7	8.1	10.6	15.2	21.5	25.8	29.2	32.1



2505738



250604026

