

Warranty Information

Proof of purchase will be required.

The guarantee does not cover faults or damage caused by incorrect installation and/or maintenance, ordinary wear and tear, water composition, etc.

This product must not be modified in any way as this will invalidate the guarantee.

*Please see www.deva-uk for full terms and conditions of warranty

Cleaning

Your product has a high-quality finish and should be treated with care to preserve the visible surfaces. Never use abrasives or abrasive cleaning agents to clean this product clean regularly with contamination free warm water and a damp soft cloth. Do not use products containing chlorine bleach or hydrochloric acid as these can damage the product.

We have a policy of continuous improvement and reserve the right to change specifications without notice.

METHVEN UK LIMITED
METHVEN EXPERIENCE CENTRE
3/3A STONE CROSS COURT
YEW TREE WAY
GOLBORNE
WARRINGTON
WA3 3JD
UNITED KINGDOM
INST- CR305 BRIDGE, 75504,
CR305/501 BRIDGE
-05/12/2025

TEL: 0800 195 1602
FAX: 0844 406 8690
EMAIL: sales@uk.methven.com
www.deva-uk.com
www.methven.com

Coronation Bridge Sink Mixer

Chrome, Gold

CR305 BRIDGE, 75504, CR305/501 BRIDGE

Installation Guide

Technical Specification

Working Pressure:

Min: 0.1 Bar

Max: 5.0 Bar

Operating Temperature:

Hot: 60°C

Cold: 5°C

Inlet Connections:

½" BSP

Features:

- Durable brass construction
- Separate hot and cold controls
- Swivel spout
- Dual flow
- Adjustable centre pillars
- Suitable for all plumbing systems
- Gold version - 5yr warranty on outer finish



Contents

Congratulations on the purchase of your new Deva by Methven Coronation Bridge Kitchen Sink Mixer. Our fitting instructions have been created with you in mind to provide you with all the information you require and, if you need any further help, please don't hesitate to contact our customer care team on 0800 195 1602.

General Safety Information	3
Line Drawing	3
Product Breakdown	4
Product Breakdown	4
Installation Requirements	6
Installation	6
Troubleshooting	7
Warranty Information	8
Cleaning	8

Troubleshooting

Symptom	Cause(s)	Resolution
Mixer not turning on	Mains Water supply turned off	Turn on the mains water supply
	Closed isolation valve	Open isolation valve
No hot water	Cold override	Check if the pressure is balanced. Fit pressure equalising valve.
Low Flow Rate/No Flow	Water supply failure	Investigate water supply, check plumbing and heating system for any faults
	Partially closed isolation valve	Open isolation valve
	Air lock or partial blockage in the supply pipework or hoses	Flush through pipework to ensure removal of debris and any airlocks.
	Water being drawn off elsewhere causing pressure changes or instantaneous boiler temperature changes. Ensure minimum pressure is being met.	Try not to use other water outlets when using the mixer
Water dripping from the mixer	This is normal for a short time after using the mixer	This is due to residual water tension, the build up of water in the mixer spout.
	If water continues to drip, possible issue with the flow control cartridge.	Please contact our customer care team.
Movement of fitted mixer	Fixing kit loose	Ensure fixing kit nut is sufficiently tightened.
	Extra support may be required depending on the surface the tap is fitted to.	Please contact customer care to purchase a under sink mounting triangle

Installation Requirements

Before commencing installation of the new product, ensure that the system has been flushed to remove any debris, which could cause damage to the valves and invalidate the warranty. Remove all packaging and check the components for damage before starting installation.

It is the responsibility of the installer to ensure a waterproof seal is achieved, after installation all connections must be checked for leaks.

Preparations and bylaw requirements

These taps are dual flow so the hot and cold water do not mix until the water leaves the spout. Water Bylaws require that where hot water is supplied from tank and cold from mains, non return valves are fitted on both hot and cold pipes as close as possible to the tap. These are not supplied. Where combination boilers are fitted, it is only necessary to shut off the incoming mains and turn the boiler off and non return valves are not required.

Installation (Pillar Mounted)

- 1, Remove the back nuts and back nut washers from the threaded connection.
- 2, Adjust the pillars to the required mounting holes distance. Fit loosely whilst positioning correctly.
- 3, Offer the tap up to the holes in the sink, ensuring that the base plates are correctly positioned, fully covering the mounting holes.
- 4, Tighten the pillars nuts to secure the pillar position.
- 5, On the underside of the sink fit the washers and back nuts onto the threaded connection and tighten until the tap is secure in the mounting hole.
- 6, Connect the water supply pipes to the threaded connection and tighten.
- 7, Reinstate water supply and test for leaks.

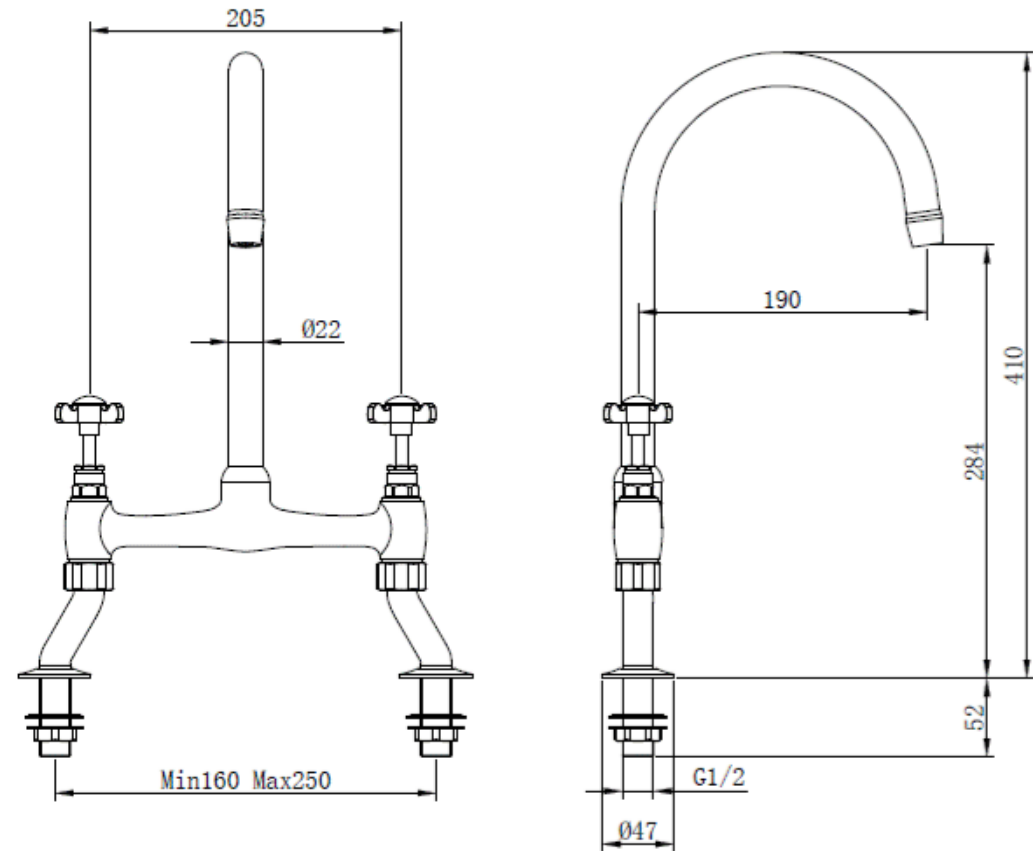
Please keep these instructions for future reference and request of replacement parts

General Safety Information

Please read all of the instructions before installation.

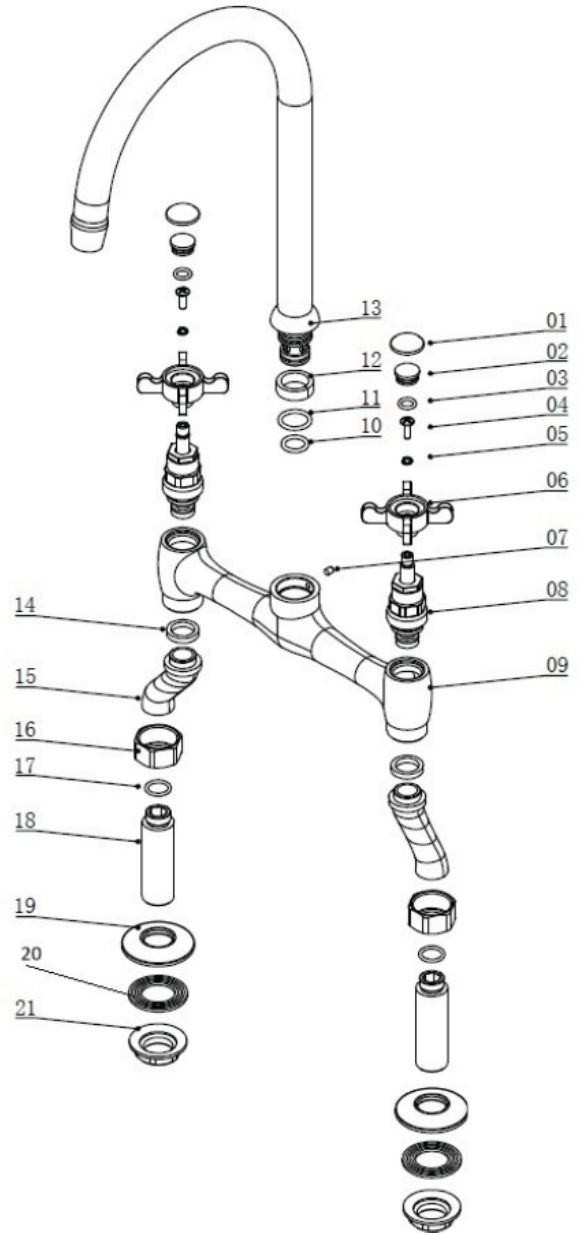
Methven recommends this product is installed by a competent person in compliance with all relevant regional regulations.

Line Drawing



Product Breakdown

Check All components are present prior to starting installation.



- 1 Hot & Cold Indicators
- 2 Cover
- 3 O-Ring
- 4 Screw
- 5 Spring
- 6 Handle
- 7 Screw
- 8 Non-rising Spindle Headworks
- 9 Sink Mixer Body
- 10 O-Ring
- 11 O-Ring
- 12 Circlip
- 13 Spout
- 14 Washer
- 15 Pillars
- 16 Hexagonal Nut
- 17 O-Ring
- 18 1/2" BSP Threaded Connection
- 19 Base Plate
- 20 Backnut Washer
- 21 Backnut Metal