

## Warranty Information

Proof of purchase will be required.

The guarantee does not cover faults or damage caused by incorrect installation and/or maintenance, ordinary wear and tear, water composition, etc.

This product must not be modified in any way as this will invalidate the guarantee.

\*Please see [www.deva-uk](http://www.deva-uk) for full terms and conditions of warranty

## Cleaning

Your product has a high-quality finish and should be treated with care to preserve the visible surfaces. Never use abrasives or abrasive cleaning agents to clean this product clean regularly with contamination free warm water and a damp soft cloth. Do not use products containing chlorine bleach or hydrochloric acid as these can damage the product.

We have a policy of continuous improvement and reserve the right to change specifications without notice.

METHVEN UK LIMITED  
METHVEN EXPERIENCE CENTRE  
3/3A STONE CROSS COURT  
YEW TREE WAY  
GOLBORNE  
WARRINGTON  
WA3 3JD  
UNITED KINGDOM  
INST- PEN104, 30006  
15.03.2022

TEL: 0800 195 1602  
FAX: 0844 406 8690  
EMAIL: [sales@uk.methven.com](mailto:sales@uk.methven.com)  
[www.deva-uk.com](http://www.deva-uk.com)  
[www.methven.com](http://www.methven.com)

# Pendle Pull Out Kitchen Rinsers Tap

PEN104, 30006

## Installation Guide

---

### Technical Specification

#### Working Pressure:

Min: 0.5 Bar

Max: 5.0 Bar

#### Operating Temperature:

Hot: 65°C

Cold: 5°C

#### Inlet Connections:

½" BSP

#### Features:

- Square Swivel spout
- Ceramic Cartridge
- Single Tilt & Turn Lever For Temperature and Flow Control



## Contents

Congratulations on the purchase of your new Deva by Methven Pendle Sink Mixer.

Our fitting instructions have been created with you in mind to provide you with all the information you require and, if you need any further help, please don't hesitate to contact our customer care team on 0800 195 1602.

General Safety Information	3
Line Drawing	3
Product Breakdown	4
Product Breakdown	4
Installation Requirements	6
Installation	6
Troubleshooting	7
Warranty Information	8
Cleaning	8

## Troubleshooting

Symptom	Cause(s)	Resolution
Mixer not turning on	Mains Water supply turned off	Turn on the mains water supply
	Closed isolation valve	Open isolation valve
No hot water	Cold override	Check if the pressure is balanced. Fit pressure equalising valve.
Low Flow Rate/No Flow	Water supply failure	Investigate water supply, check plumbing and heating system for any faults
	Partially closed isolation valve	Open isolation valve
	Air lock or partial blockage in the supply pipework or hoses	Flush through pipework to ensure removal of debris and any airlocks.
Water dripping from the mixer	Water being drawn off elsewhere causing pressure changes or instantaneous boiler temperature changes. Ensure minimum pressure is being met.	Try not to use other water outlets when using the mixer
	This is normal for a short time after using the mixer	This is due to residual water tension, the build up of water in the mixer spout.
Movement of fitted mixer	If water continues to drip, possible issue with the flow control cartridge.	Please contact our customer care team.
	Fixing kit loose	Ensure fixing kit nut is sufficiently tightened.
	Extra support may be required depending on the surface the tap is fitted to.	Please contact customer care to purchase a under sink mounting triangle

## Installation Requirements

Before commencing installation of the new product, ensure that the system has been flushed to remove any debris, which could cause damage to the valves and invalidate the warranty. Remove all packaging and check the components for damage before starting installation.

It is the responsibility of the installer to ensure a waterproof seal is achieved, after installation all connections must be checked for leaks.

## Preparations and bylaw requirements

These taps are single flow so the hot and cold water mix in the body. Water Bylaws require that where hot water is supplied from tank and cold from mains, non-return valves are fitted on both hot and cold pipes as close as possible to the tap. These are not supplied. Where combination boilers are fitted, it is only necessary to shut off the incoming mains and turn the boiler off and non-return valves are not required.

## Installation

- 1, Place the O-ring onto the thread of mixer body
- 2, Offer the tap up to the hole in the sink
- 3, On the underside of the sink fit the mounting triangle, rubber and metal washers onto the threaded fixing bolt and using the nut provided tighten until the tap is secure in the mounting hole.
- 4, Connect the male end of the tail to the corresponding hot and cold inlets, take care not to bend the tails above 30°C from the vertical.
- 5, Loosen the screws on the weight, place the weight on the proper position of the pull-out hose, and then fully tighten the screws back to the weight.  
(It is recommended that the dead weight assembly be placed in the pull-out hose 300mm to 500mm from underneath of sink.)
- 6, Reinstate water supply and test for leaks.

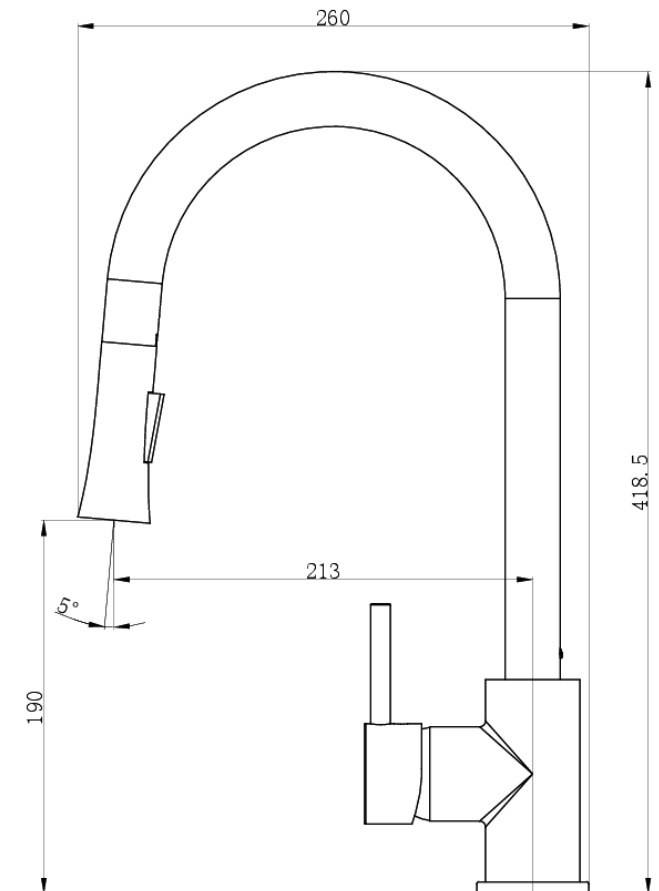
Please keep these instructions for future reference and request of replacement parts

## General Safety Information

Please read all the instructions before installation.

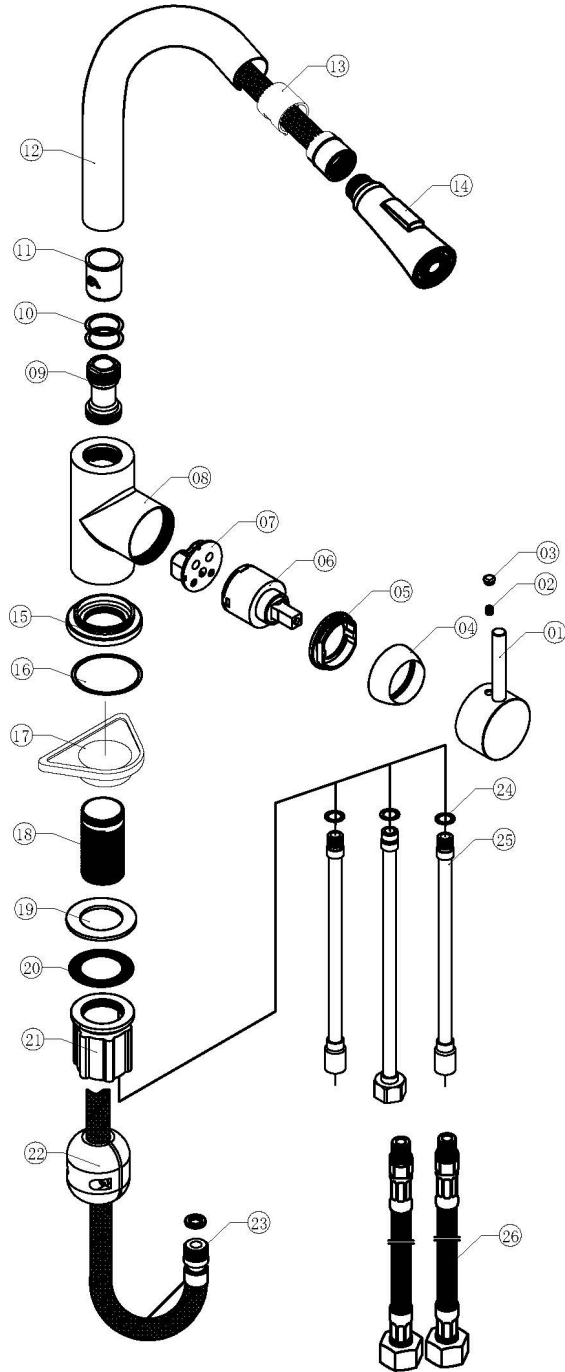
Methven recommends this product is installed by a competent person in compliance with all relevant regional regulations. The Pendle Sink Mixer is single flow (the hot and cold water mix in the body) and therefore should be supplied with hot and cold water at balanced pressures. If the taps are not supplied with balanced pressures, then the mixer will not function correctly. It will also be necessary to fit non-return valves on both the hot and cold feeds.

## Line Drawing



## Product Breakdown

Check All components are present prior to starting installation.



Item Number	Item Name
1	Handle
2	Screw
3	Indicator
4	Cartridge Cap
5	Hex Nut
6	Cartridge
7	Cartridge Base
8	Tap Body
9	Connector
10	O-Ring
11	Plastic Clip
12	Spout
13	Plastic Part
14	Hand Shower
15	Base Ring
16	O-Ring
17	Plastic Fix Board
18	Fixing Tube
19	Rubber Gasket
20	Gasket
21	Plastic Nut
22	Iron Weight
23	Shower Hose
24	O-Ring
25	Brass Tube
26	Flexi Tails
27	Shower Hose Protection