

Clarity

3 IN 1 WATER FILTER TAP

Product Code: CTY001BS

Installation and User Guide

Technical Specification

Working Pressure:

Min: 0.5 Bar

Max: 5.0 Bar

Operating Temperature:

Hot: 65°C

Cold: 5°C

Features:

- Tilt and turn lever for temperature and flow control
- Separate lever for filtered water
- Comes with carbon filter cartridge and filter housing
- Pull out spout, for greater sink access



Please read these instructions fully before commencing the installation.



Table of Contents

| | |
|------------------------------|----|
| • Safety Information | 2 |
| • Pre-Installation | 3 |
| • Line Drawing | 3 |
| • Parts Breakdown | 4 |
| • Product Installation | 5 |
| • How to Use | 7 |
| • Replacing Filter Cartridge | 8 |
| • Troubleshooting | 9 |
| • Warranty | 10 |
| • Cleaning | 10 |

Safety Information



CAUTION: Always turn off the water supply before removing an existing tap or replacing any part of a tap. Open the tap handle to relieve water pressure and ensure that the water is completely shut off.

Please read all of the instructions before installation.

Methven recommends this product is installed by a competent person in compliance with all relevant regional regulations.

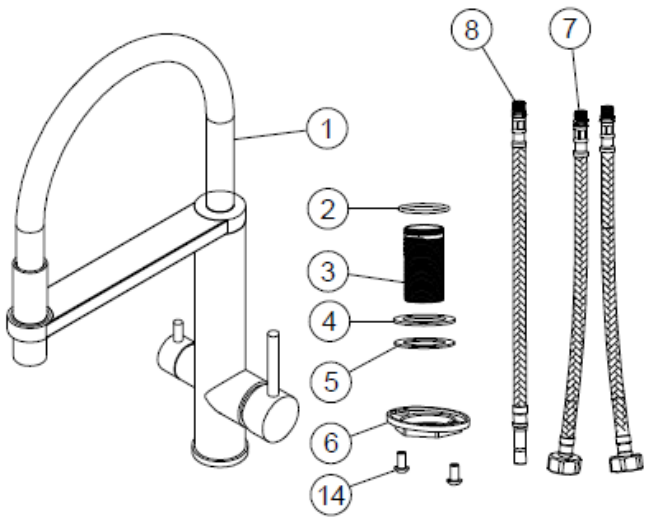
Remove all packaging and check the components for damage before starting installation.

This product must not be modified in any way as this will invalidate the guarantee.

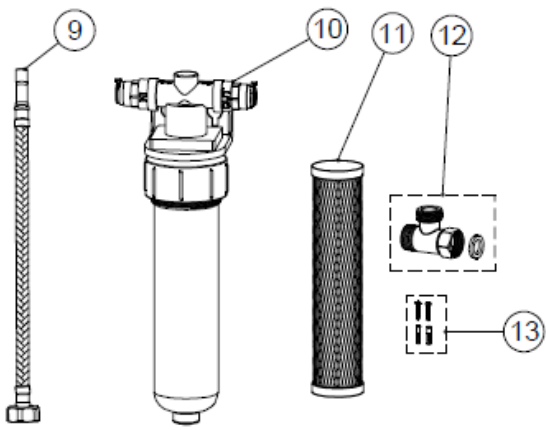
It is the responsibility of the installer to ensure a waterproof seal is achieved. After installation all connections must be checked for leaks.

All outlets used primarily for personal hygiene shall deliver water at a safe temperature as per regional regulations.

Parts Breakdown



- 1. Tap Body
- 2. Washer
- 3. Threaded Connection
- 4. Washer
- 5. Washer
- 6. Locking Nut
- 7. 2 x Flexi Tails
- 8. Purifier Outlet Hose
- 9. Purifier Inlet Hose
- 10. Filter Housing
- 11. Filter Cartridge
- 12. Tee valve
- 13. Screws



Product Installation

- Before commencing installation of the new product, ensure that the system has been flushed to remove any debris which could cause damage to the valves and invalidate the warranty.
Installation

- Isolate the water supply.

- Place the washer (2) into the recess within the base of the tap body.

- Screw threaded connection (3) into the bottom of the mixer body (1).

- Screw both flexi tails (7) into the tap body, ensuring they are inserted into the right hand holes as shown and marked 'H' and 'C' in the diagram. Ensure the O-ring washer on the tail is positioned inside the tap body. Hand tighten, do not use PTFE tape or similar to create the seal.

- Screw the purifier outlet hose (8) into the tap body, inserting into the left hand hole as shown and marked 'P' in the diagram.

- Feed the tap body and tails through the hole in the sink. The hole is required to be 35mm diameter.

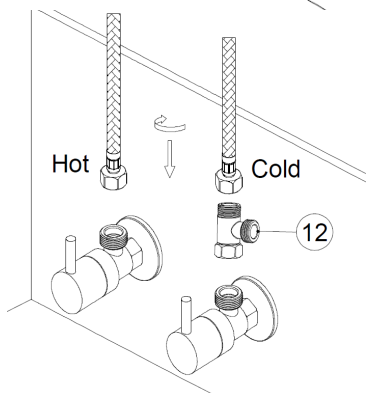
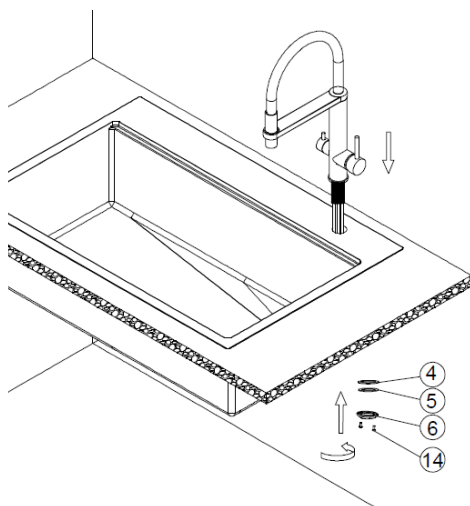
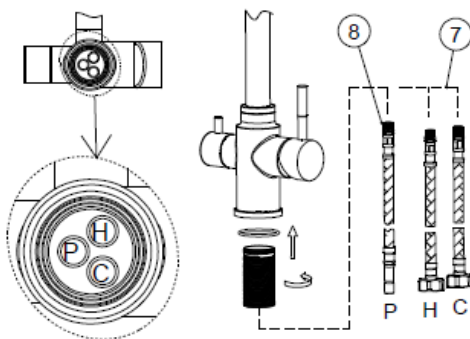
- From the underside of the sink, feed the washers (4 & 5) onto the threaded connector (3) to the underside of the tap.

- Secure the locking nut (6) onto the threaded connector (3) taking care not to overtighten.

- Screw the tee valve body (12) to the cold flexi tail.

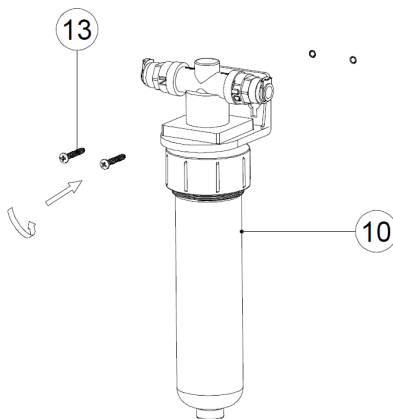
- Connect the female end of the hot flexi tail to the hot supply pipe.

- Connect the tee valve body (12) to the cold supply pipe.

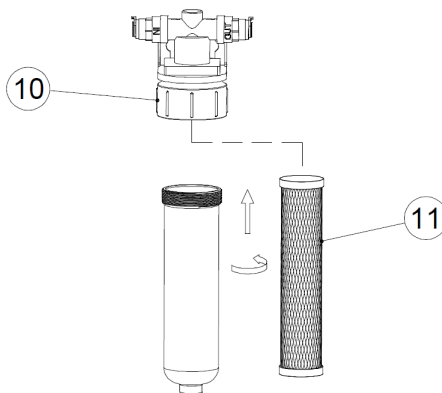


Product Installation

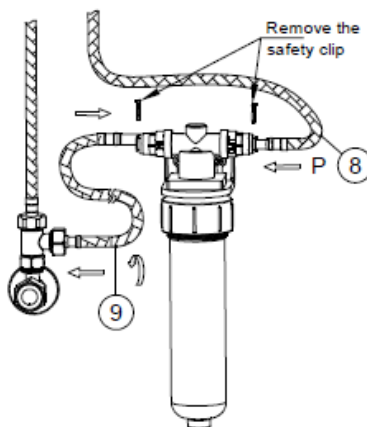
- Secure the filter housing (10) in position using the screws provided (13).



- Unscrew the filter holder from the filter housing.
- Remove the protective wrapper from the filter cartridge and insert into the filter holder. Re-screw the filter holder onto the housing.



- Connect the purifier inlet pipe (9) to the tee valve body (12).
- Connect the purifier inlet pipe (9) to the inlet connection of the filter housing (10).
- Connect the purifier outlet pipe (8) to the outlet connection on the filter housing.
- Reinstate the water supply and check for leaks.



How To Use Your Tap



REGULAR HOT & COLD

- Pull mixer lever away from the tap for **Cold Water**.
- Pull handle forward for **Hot Water**.
- Mixer water will dispense from the main spout attached to the flexible tube.
- The end of the flexible tube spout can be lifted out of the holder to direct the spray.



FILTERED WATER

- Pull small lever handle forward for **Filtered Water**
- Filtered water will dispense from the outlet on the fixed bar spout.



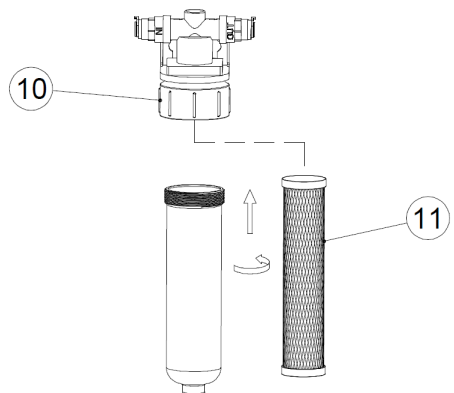
NOTE: Do not use cold water when using filtration water

Replacing the Filter Cartridge

- The tap is supplied with a filter housing and carbon filter cartridge.
- Carbon filtration helps to:
 - Remove impurities whilst maintaining minerals
 - Improve taste
 - Improve odour
- Capacity: 2000L
- Replacement cycle: Recommended replacement every 3-6 months. More frequent replacement may be required in hard water areas.

To Replace the Filter Cartridge:

- Unscrew the filter holder from the filter housing (10).
- Remove the existing filter cartridge from the holder. Take care, filter holder may contain water.
- Remove the protective wrapper from the new filter cartridge (11) and insert into the filter holder. Re-screw the filter holder onto the housing.



Replacement Filter
Cartridge code:
FILTER002

Troubleshooting

| Symptom | Cause(s) | Resolution |
|-------------------------------|---------------------------------------------------------------------------------------------------------------------------------------------|----------------------------------------------------------------------------------------------------|
| Mixer not turning on | Mains Water supply turned off | Turn on the mains water supply |
| | Closed isolation valve | Open isolation valve |
| No hot water | Cold override | Check if the pressure is balanced. Fit pressure equalising valve. |
| Low Flow Rate/No Flow | Water supply failure | Water pressure too low, investigate water supply, check plumbing and heating system for any faults |
| | Partially closed isolation valve | Open isolation valve |
| | Air lock or partial blockage in the supply pipework or hoses | Flush through pipework to ensure removal of debris and any airlocks. |
| | Water being drawn off elsewhere causing pressure changes or instantaneous boiler temperature changes. Ensure minimum pressure is being met. | Try not to use other water outlets when using the mixer |
| Water dripping from the mixer | This is normal for a short time after using the mixer | This is due to residual water tension, the build up of water in the mixer spout. |
| | If water continues to drip, possible issue with the flow control cartridge. | Please contact our customer care team. |
| Movement of fitted mixer | Fixing kit loose | Ensure fixing kit nut is sufficiently tightened. |
| | Extra support may be required depending on the surface the tap is fitted to. | Please contact customer care to purchase a under sink mounting triangle |

Warranty

Your tap has a warranty of 12 years.

Proof of purchase will be required.

The guarantee does not cover faults or damage caused by incorrect installation and/or maintenance, ordinary wear and tear, water composition, etc.

*Please see www.deva.com for full terms and conditions of warranty

Cleaning

Your product has a high-quality finish and should be treated with care to preserve the visible surfaces.

Never use abrasives or abrasive cleaning agents to clean this product.

Clean regularly with contamination free warm water and a damp soft cloth.

Do not use products containing chlorine, bleach or hydrochloric acid as these can damage the product.

We have a policy of continuous improvement and reserve the right to change specifications without notice.

METHVEN UK LIMITED
METHVEN EXPERIENCE CENTRE
3/3A STONE CROSS COURT
YEW TREE WAY
GOLBORNE
WARRINGTON
WA3 3JD
UNITED KINGDOM

TEL: 0800 195 1602
FAX: 0844 406 8690
EMAIL:
sales@uk.methven.com
www.deva-uk.com
www.methven.com

Inst-CTY001BS
08/07/2024